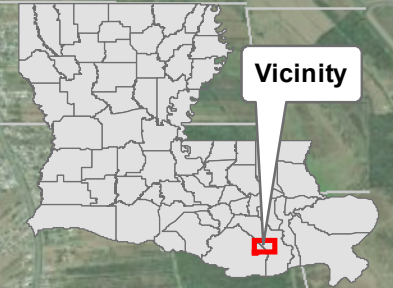




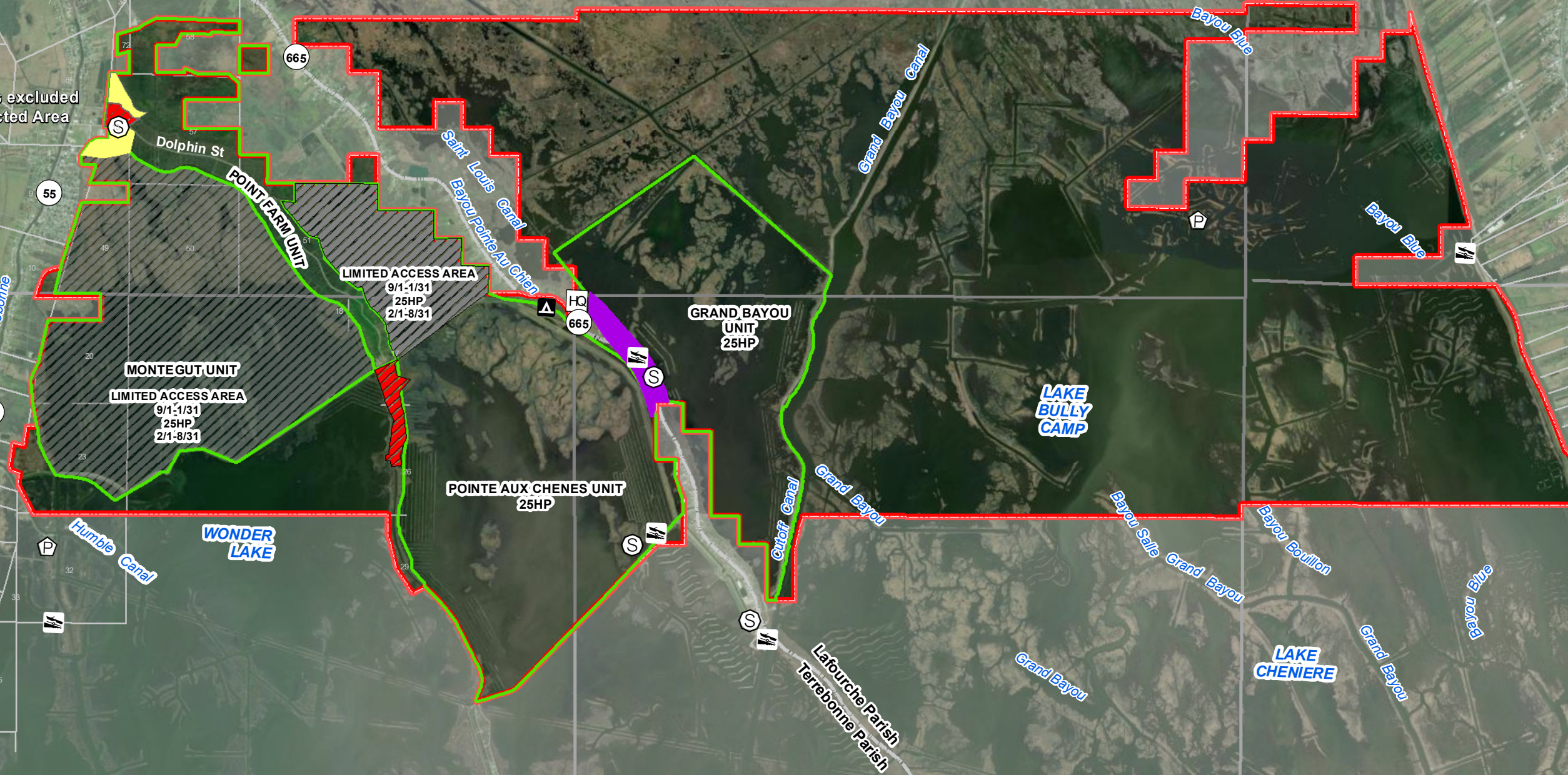
POINTE AUX CHENES

Wildlife Management Area

JULY 2023



Dolphin St is excluded from Restricted Area



The Louisiana Department of Wildlife and Fisheries (LDWF) makes no representations or warranties whatsoever, whether express, implied, statutory or otherwise, as to the quality and accuracy in producing this map or data set. The user should be aware that the information on which it is based may have come from any of a variety of sources, which are of varying degrees of accuracy. Therefore, LDWF cannot guarantee the accuracy of this map or data set, and shall not be liable to any other person, party, or entity as a result of any reliance on this map or data set and/or any information contained herein or interpreted herefrom. Further, LDWF does not accept any responsibility for the consequences of its use.

OWNER
LOUISIANA DEPARTMENT OF WILDLIFE & FISHERIES
36,199 ACRES

0 1 2 Miles

	Boat Launch		State Highway		Township & Range
	Camping - Primitive		Improved Road		Section
	Headquarters		WMA Boundary		Management Unit
	Private Facility		Parish Boundary		Limited Use Area (Archery Only, Firearms Prohibited)
	Self-Clearing Permit Station		No Wake Zone		Limited Access Area
			Restricted Area		

Operation of internal combustion powered vessels prohibited during the months of September through January. Trolling motors may be used. Vehicles prohibited November through January.

Refer to Hunting Pamphlet for Additional Regulations and Information

Self-Clearing Permits available at all Self-Clearing Permit Stations.