

X: -91.461192
Y: 32.47214

X: -91.517855
Y: 32.463998

X: -91.507774
Y: 32.462972

X: -91.531872
Y: 32.460635

X: -91.549036
Y: 32.45254

17N 9E

17N 10E

X: -91.462565
Y: 32.440284

X: -91.474751
Y: 32.439799

X: -91.484092
Y: 32.43579

X: -91.47473
Y: 32.435717

X: -91.549342
Y: 32.426569

X: -91.496129
Y: 32.426208

X: -91.496072
Y: 32.425313

X: -91.483941
Y: 32.425331

Legend

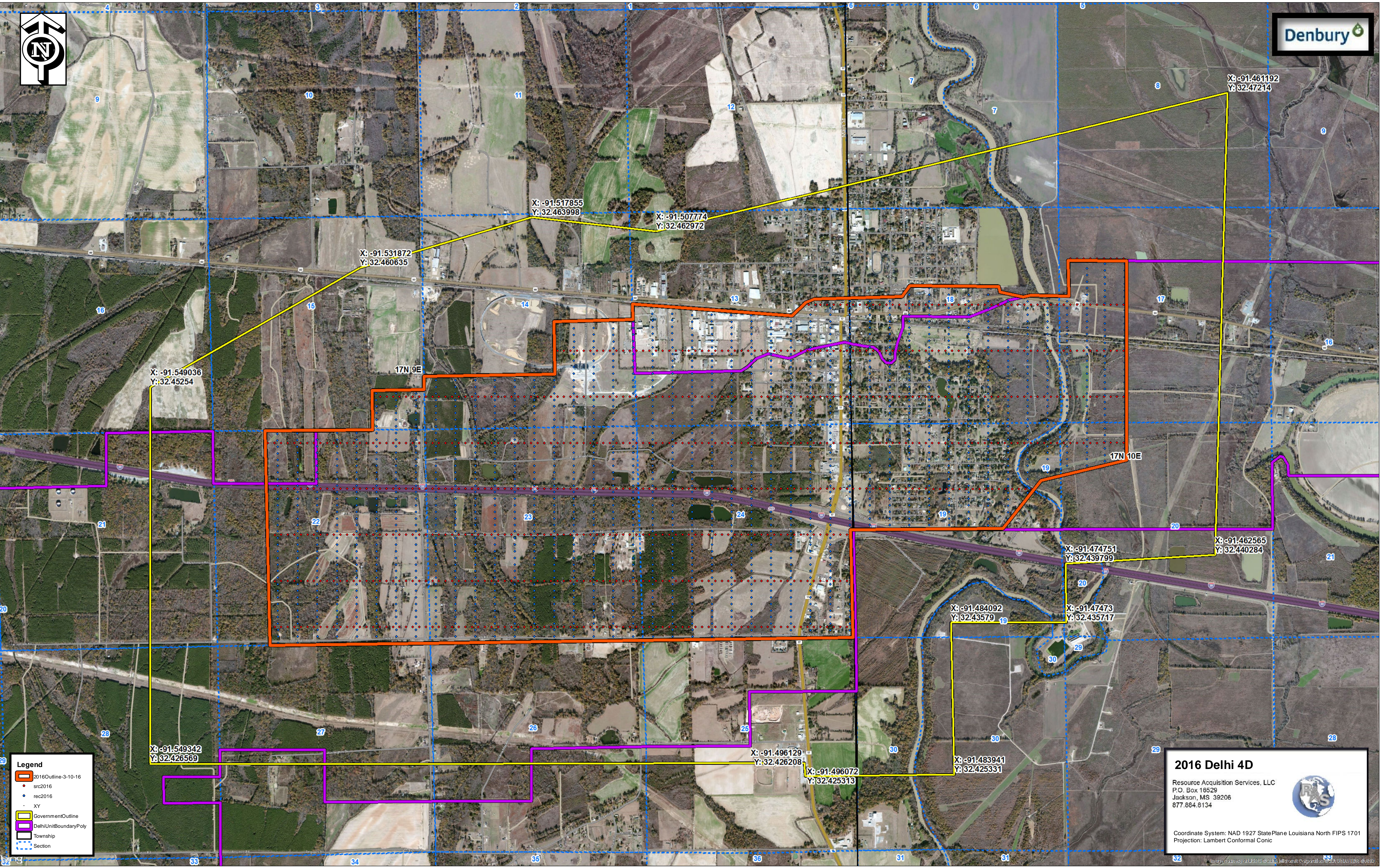
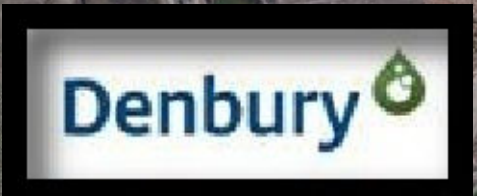
- 2016Outline-3-10-16
- src2016
- rec2016
- XY
- GovernmentOutline
- DelhiUnitBoundaryPoly
- Township
- Section

2016 Delhi 4D

Resource Acquisition Services, LLC
 P.O. Box 16529
 Jackson, MS 39206
 877.884.8134



Coordinate System: NAD 1927 StatePlane Louisiana North FIPS 1701
Projection: Lambert Conformal Conic




Legend

- 2016Outline-3-10-16
- src2016
- rec2016
- XY
- GovernmentOutline
- DelhiUnitBoundaryPoly
- Township
- Section

2016 Delhi 4D

Resource Acquisition Services, LLC
 P.O. Box 16529
 Jackson, MS 39206
 877.884.8134



Coordinate System: NAD 1927 StatePlane Louisiana North FIPS 1701
 Projection: Lambert Conformal Conic

X: -91.531872
Y: 32.460635

X: -91.517855
Y: 32.463998

X: -91.507774
Y: 32.462972

X: -91.461192
Y: 32.47214

X: -91.549036
Y: 32.45254

17N 9E

17N 10E

X: -91.462565
Y: 32.440284

X: -91.474751
Y: 32.439799

X: -91.484092
Y: 32.43579

X: -91.47473
Y: 32.435717

X: -91.549342
Y: 32.426569

X: -91.496129
Y: 32.426208

X: -91.496072
Y: 32.425313

X: -91.483941
Y: 32.425331