



2015/2016 Oyster Season Summary

Steve Beck | Louisiana Wildlife and Fisheries Commission Meeting
May 5, 2016

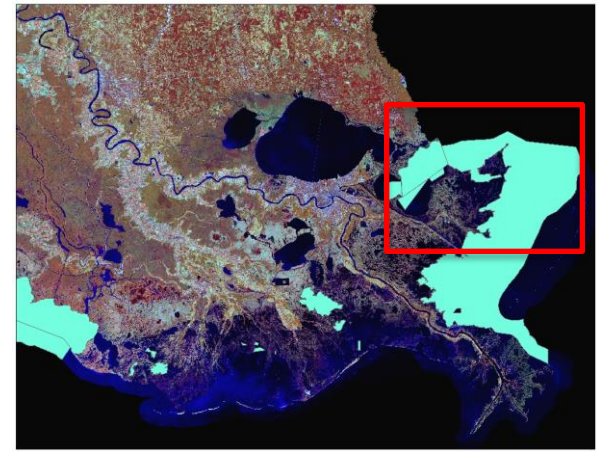
Public Oyster Area Harvest Estimates:

- **Major Oyster Production Areas Only**
 - Public Seed Grounds East of MS River, North of MRGO
 - Public Seed Grounds East of MS River, South of MRGO
 - Hackberry Bay Public Seed Reservation
 - Sister (Caillou) Lake Public Seed Reservation
 - Calcasieu Lake Public Oyster Area
- **Estimates derived from on-water interviews, not trip tickets**
 - Data Preliminary
- **Harvest Fraction**
 - Percent of available resource harvested
- **Shell Budget Fraction**
 - Percent of predicted harvest amount that maintains reef material



EAST OF MS RIVER/NORTH OF MRGO:

- Seed Oyster Harvest: **79,133 bbls** ↓
- Market Oyster Harvest: **86,972 sacks** ↑
- Total Harvest: **122,619 bbls** ↑
 - Harvest Fraction: **24.1%**
 - Shell Budget Fraction: **83.7%**
 - Seed: **206.6%**
 - Market: **40.2%**

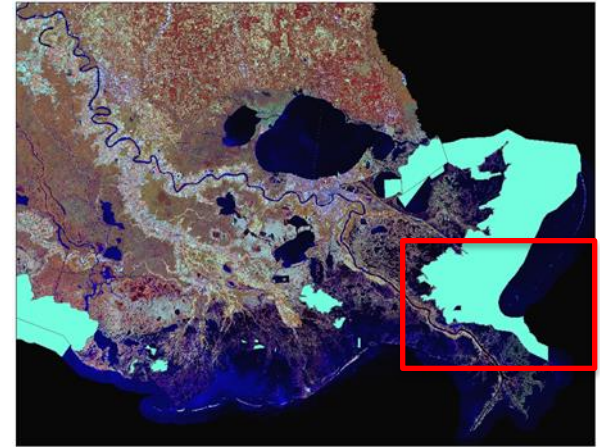


NOTES:

- Season Length: Seed: **57 days** Market: **50 days** ↑
- Closure: Excessive Reef Removal, Undersize Harvest
- Exceptional Fall Spat Set
- April transplant: **4.9%** of total seed harvest
- Flood events: No substantial mortality

EAST OF MS RIVER/SOUTH OF MRGO:

- Seed Oyster Harvest: **11,628 bbls** ↓
- Market Oyster Harvest: **7,323 sacks** ↓
- Total Harvest: **15,289 bbls** ↓
 - Harvest Fraction: **30.2%**
 - Shell Budget Fraction: **350.6%**
 - Seed: **1,481.3%**
 - Market: **102.4%**



NOTES:

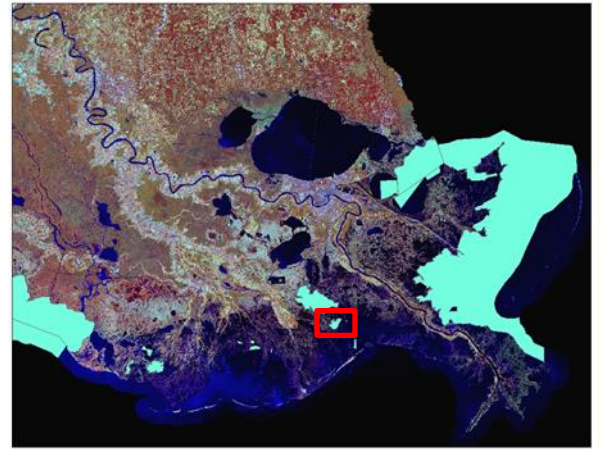
- Season Length: Seed: **54 days** Market: **193 days**
- Closure: Thresholds exceeded, Excessive reef removal
- No harvest activity observed since March 14th

HACKBERRY BAY:

- Seed Oyster Harvest: **9,359 bbls** ↑
- Market Oyster Harvest: **2,038 sacks** ↑
- Total Harvest: **10,378 bbls** ↑
 - Harvest Fraction: **58.8%**
 - Shell Budget Fraction: **530.6%**
 - Seed: **1,035.3%**
 - Market: **96.9%**

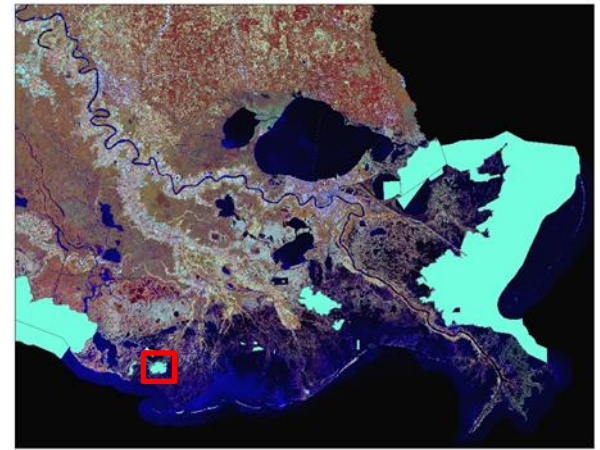
NOTES:

- Season Length: Seed: **4 days** Market: **22 days** ↑
- Closure: Thresholds Exceeded



SISTER LAKE:

- Seed Oyster Harvest: **38,308 bbls** ↑
- Market Oyster Harvest: **65,147 sacks** ↓
- Total Harvest: **70,882 bbls** ↑
 - Harvest Fraction: **35.6%**
 - Shell Budget Fraction: **103.3%**
 - Seed: **686.0%**
 - Market: **51.7%**

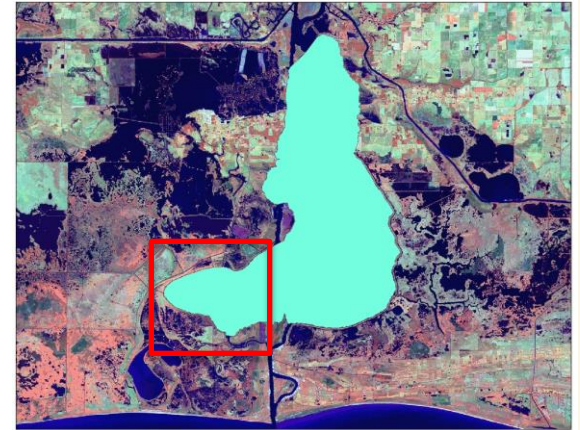


• NOTES:

- Season Length: Seed: **9 days** Market: **37 days** ↑
- Closure: Thresholds Met/Exceeded
- April Re-opening: **-25.5%** of total market harvest
 - Allowed for by budget model
 - Will test theory of increased spat settlement on disturbed shell

CALCASIEU LAKE:

- Seed Oyster Harvest: **Not Applicable**
- Market Oyster Harvest: **25,268 sacks** ↓
- Total Harvest: **12,634 bbls** ↓
 - Harvest Fraction: **46.4% (27.9% total)**
 - Shell Budget Fraction: **75.3%**



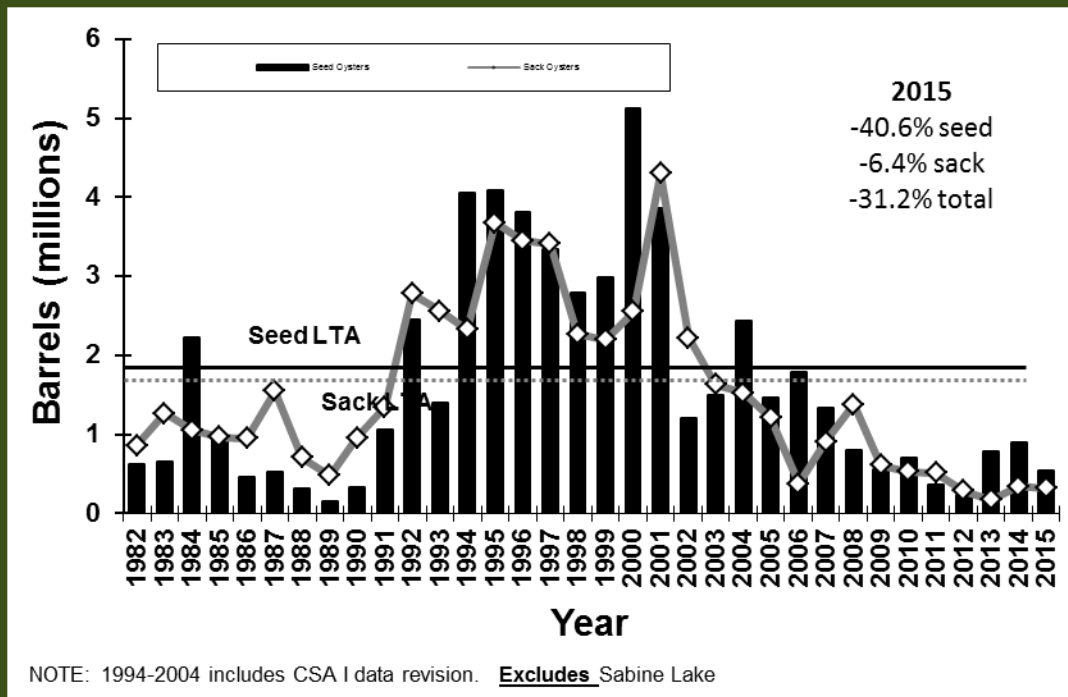
• NOTES:

- Season Length: **108 fishable days** (West Cove Only)
- Frequent DHH Closures: High River Levels
- Limited resource on East Side
- Continued low production in proximity to Ship Channel
- 2015 cultch plants appear successful



GENERAL OBSERVATIONS:

- Season Goal : Prolonged season length in several areas within shell budget thresholds, partially successful
- Heavy reliance on 2012/2013 cultch plants
- Oyster stock still well below average, need to consider more conservative management in order to rebuild



QUESTIONS?

Sister Lake: April 4th 2016

