

Rare Animals of Louisiana

Red Wolf

Canis rufus

Rarity Rank: SX/G1Q (extinct in LA)

	1	2	3	4	5
State					
Global					
	imperiled		rare		secure



U.S Fish and Wildlife Service

Identification:

- Dorsal pelage mostly gray with black and sometimes yellowish or reddish hairs on legs and underparts
- Muzzle, ears and nape are tawny
- Nose pad over 25 mm wide
- Total length from 135 to 165 cm
- Larger than coyote and smaller than the Gray wolf

Habitat:

- Includes upland and lowland forest, shrubland, river bottoms, coastal prairies and marshes
- Areas with vegetative cover

Food habits:

Opportunistic, though mainly small mammals and birds

Range:

Extirpated from its historical range with the exception of the Carolina's

Reproduction:

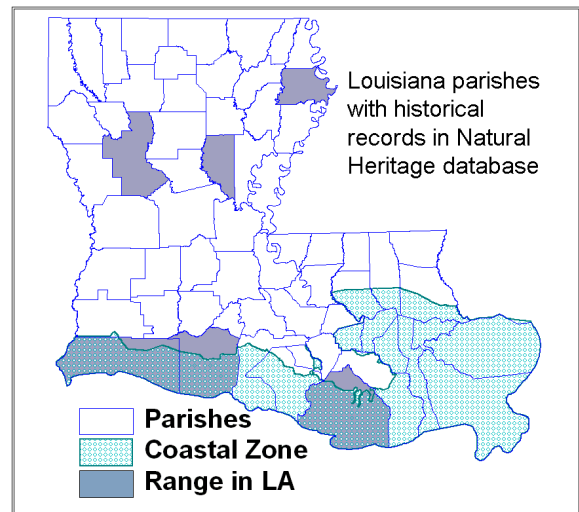
- Mate in January and February
- 4 to 7 pups born in April and May
- sexually mature at 3 years

Threats:

- Historically threatened by human trapping and poisoning, resulting in population decline
- Habitat loss
- Hybridization with coyotes

LA River Basins:

Terrebonne, Vermilion-Teche, Mermentau, Calcasieu, Sabine, Red, Ouachita (known occurrences from LNHP database), historically found statewide



Range based on occurrences in Natural Heritage database

Rare Animals of Louisiana



U. S. Fish and Wildlife Service

References:

Lowery, George H. The Mammals of Louisiana and Its Adjacent Waters. Louisiana State UP, 1974.

NatureServe Explorer: An online encyclopedia of life [web application]. 2006. Version 6.1 . Arlington, Virginia, USA: NatureServe. Available: <http://www.natureserve.org/explorer>.

Burt, William H. A Field Guide to the Mammals North America North of Mexico. 3rd ed. Boston: Houghton Mifflin Company, 1980.

Funding provided by the Louisiana Department of Wildlife and Fisheries and the Barataria-Terrebonne National Estuary Program

For more information, please visit our Web pages at

www.wlf.la.gov/wildlife/louisiana-natural-heritage-program or 225-765-2811

www.BTNEP.org or 1-800-259-0869