

Rare Plants of Louisiana



Chamaesyce bombensis - sand dune spurge Spurge Family (Euphorbiaceae)

Rarity Rank: S1/G4G5

	1	2	3	4	5
State					
Global					
	imperiled		rare		secure

Range: Atlantic and Gulf coast states from VA to TX; elsewhere on Gulf and Caribbean beaches

Recognition:

- Small prostrate herb with opposite leaves; plants exude milky latex when wounded
- Leaves strictly entire (lacking teeth or serration), glabrous, about 3 times as long as wide, to 15 mm long, leaf bases oblique or rounded
- Style branches thicker than the united portion of the style

Flowering Time: June to October

Light Requirement: Full sun

Wetland Indicator Status:

Does not occur in wetlands anywhere in the range.

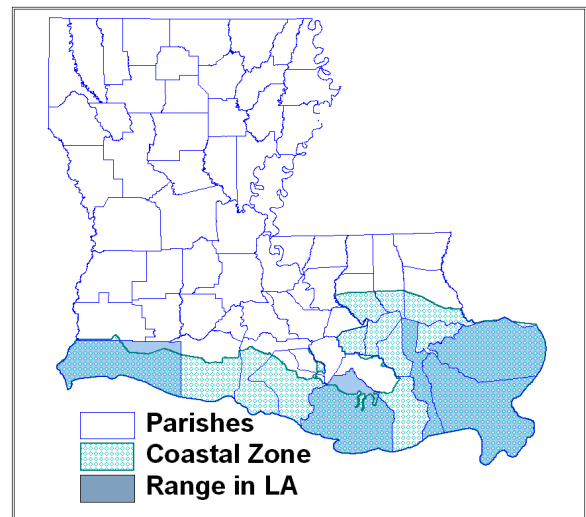
Habitat: Coastal dune grasslands and high energy beaches.

Threats:

- Shoreline erosion
- Human degradation of beaches and sand dunes to include trampling and vehicular traffic

Beneficial Management Practices:

- Beach nourishment and shoreline protection
- Protect beaches and dunes from vehicles and excessive foot traffic
- Conduct field work to relocate this species as all records are rather old



LA River Basins: Pontchartrain, Terrebonne, Mermentau, Calcasieu, Sabine

Rare Plants of Louisiana



Photo by Diane Ferguson, LSU Herbarium

References:

Correll, D. S. and M. C. Johnston. 1970. Manual of the Vascular Plants of Texas. Texas Research Foundation, Renner. 1881 pp.

USDA, NRCS. 2007. The PLANTS Database (<http://plants.usda.gov>). National Plant Data Center, Baton Rouge, LA 70874-4490 USA.

Weakley, A. S. 2007. Flora of the Carolina, Virginia, Georgia, and surrounding areas. Working Draft. University of North Carolina Herbarium (NCU), North Carolina Botanical Garden, University of North Carolina, Chapel Hill. <http://www.herbarium.unc.edu/WeakleysFlora.pdf>.

Funding provided by the Louisiana Department of Wildlife and Fisheries and the Barataria-Terrebonne National Estuary Program

For more information, please visit our Web pages at

www.wlf.la.gov/wildlife/louisiana-natural-heritage-program or 225-765-2811

www.BTNEP.org or 1-800-259-0869