

Rare Plants of Louisiana



Fuirena scirpoidea - southern umbrella-sedge Sedge Family (Cyperaceae)

Rarity Rank: S1/G5

	1	2	3	4	5
State	Yellow				
Global					Yellow
	imperiled		rare		secure

Range: AL, FL, GA, IL, LA, MS, NC, TX

Recognition:

- Perennial sedge with long, branched rhizomes from which stems arise at spaced intervals (like pieces of a picket fence)
- Stems to ca 60 cm tall
- Spikes terminal at end of stems, solitary or in clusters (when solitary, superficially resembles *Eleocharis*)
- Awn of spikelet scales not spreading or recurved, thus spikelets do not appear bur-like, as in our other *Fuirena* spp.
- As in all of our *Fuirena* spp., the perianth (reduced petals and sepals collectively) consist of 3 blade-like structures alternating with three bristles (rather than all bristles)
- Leaves mostly consisting of bladeless sheaths



Flowering Time: March to August

Light Requirement: Full sun

Wetland Indicator Status:

OBL – almost always in wetlands

Habitat:

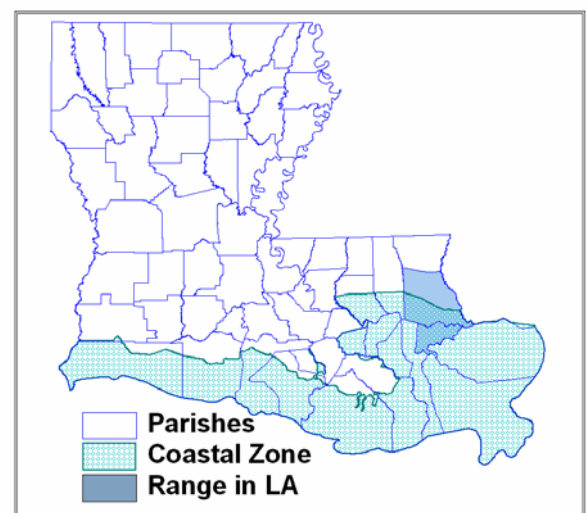
Louisiana's only known extant site is in sandy soil at the edge of a fresh to intermediate marsh near the Pearl River. There is a historical specimen collected in 1902 from "banks of Mississippi River, New Orleans".

Threats:

- Dredging, channeling and leveeing of rivers
- Apparently naturally rare in Louisiana

Beneficial Management Practices:

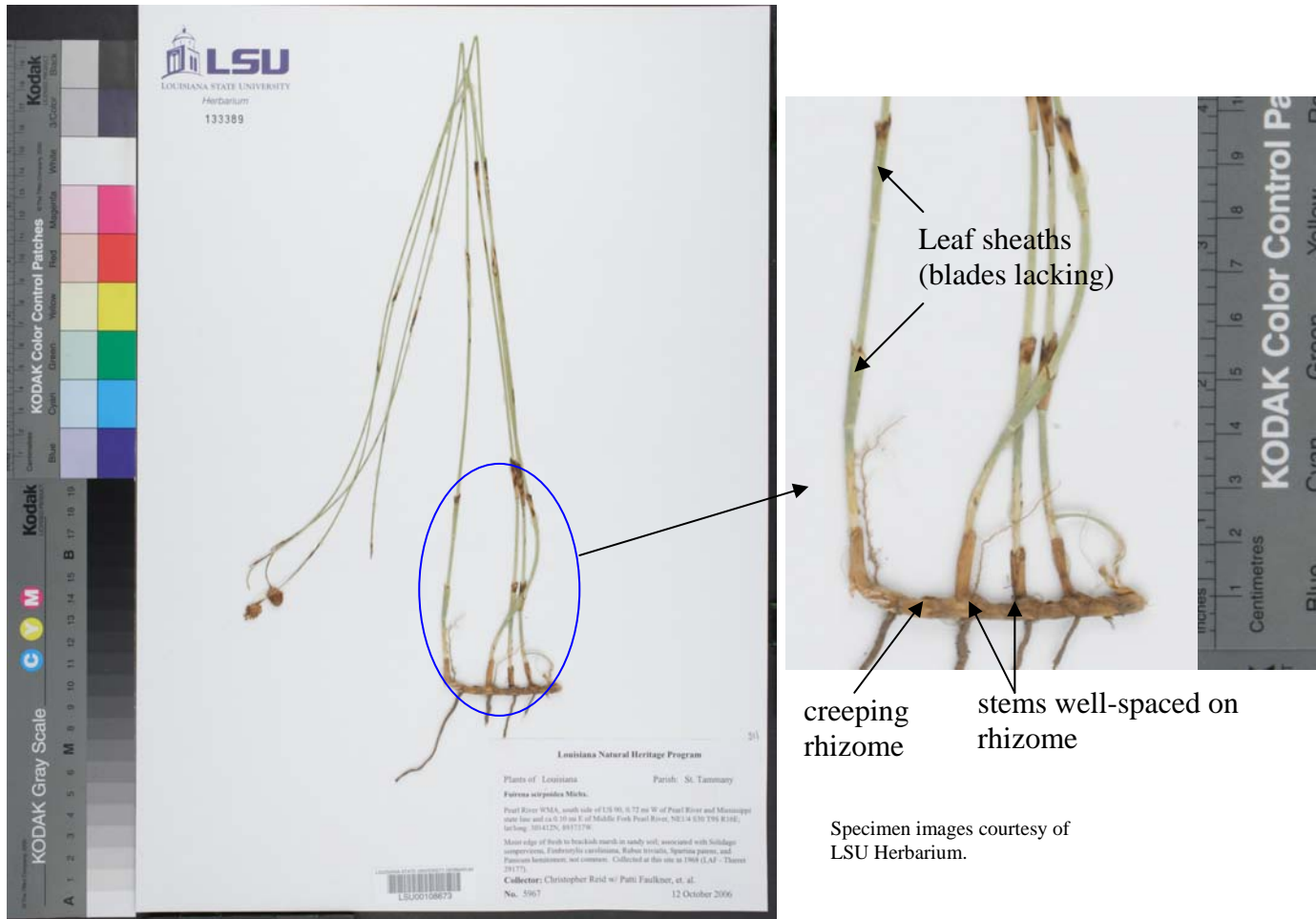
- Identify and protect the better and larger batture forests and work with Corps of Engineers to conserve sand bars and sandy river banks
- Conduct more field surveys along the Mississippi River and on sandy banks of the Pearl River and tributaries to detect additional populations



Rare Plants of Louisiana



LA River Basins: Pearl, Pontchartrain, Mississippi



References:

Duncan, W. H. and M. B. Duncan. 1987. The Smithsonian guide to seaside plants of the Gulf and Atlantic coasts. Smithsonian Institution Press, Washington, D.C. 409 pp.

Godfrey, R. K. and J. W. Wooten. 1981. Aquatic and wetland plants of the southeastern United States: monocotyledons. University of Georgia Press, Athens, GA. 712 pp.

NatureServe. 2007. NatureServe Explorer: An online encyclopedia of life [web application]. Version 6.2. NatureServe, Arlington, Virginia. Available <http://www.natureserve.org/explorer>.

Tobe, J. D., K. C. Burks, R. W. Cantrell, M. A. Garland, M. E. Sweeley, D. W. Hall, P. Wallace, G. Anglin, G. Nelson, J. R. Cooper, D. Bickner, K. Gilbert, N. Aymond, K. Greenwood, and N. Raymond. 1998. Florida wetland plants: an identification manual. Tallahassee: Florida Department of Environmental Protection. 598 pp.

Funding provided by the Louisiana Department of Wildlife and Fisheries and the Barataria-Terrebonne National Estuary Program

For more information, please visit our Web pages at

www.wlf.la.gov/wildlife/louisiana-natural-heritage-program or 225-765-2811

www.BTNEP.org or 1-800-259-0869