

Rare Plants of Louisiana



Chamaelirium luteum - fairy wand Lily Family (Liliaceae)

Rarity Rank: S2S3/G5

	1	2	3	4	5
State		■	■		
Global					■
	imperiled		rare		secure

Range: Eastern United States

Recognition:

- Flowering stalk is wand-like, with many cream-white flowers at the top of the stalk somewhat resembling a bottlebrush – stems ca 0.6 to 1 m tall
- Basal clump of smooth oblong evergreen leaves, to 20 cm long by 1.5-6 cm wide
- Plants dioecious (male and female flowers born on separate plants)
- Flowers turn yellowish upon drying, hence the specific epithet “*luteum*”



Flowering Time: Late March and April

Light Requirement: Shade

Wetland Indicator Status:

FACU – usually occurs in uplands but occasionally found in wetlands

Habitat:

Mesic acidic sandy loam soils in hardwood slope and mixed hardwood-loblolly pine forests

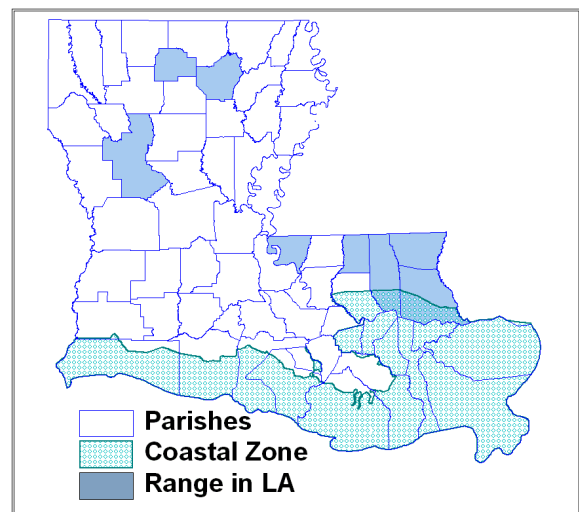
Threats:

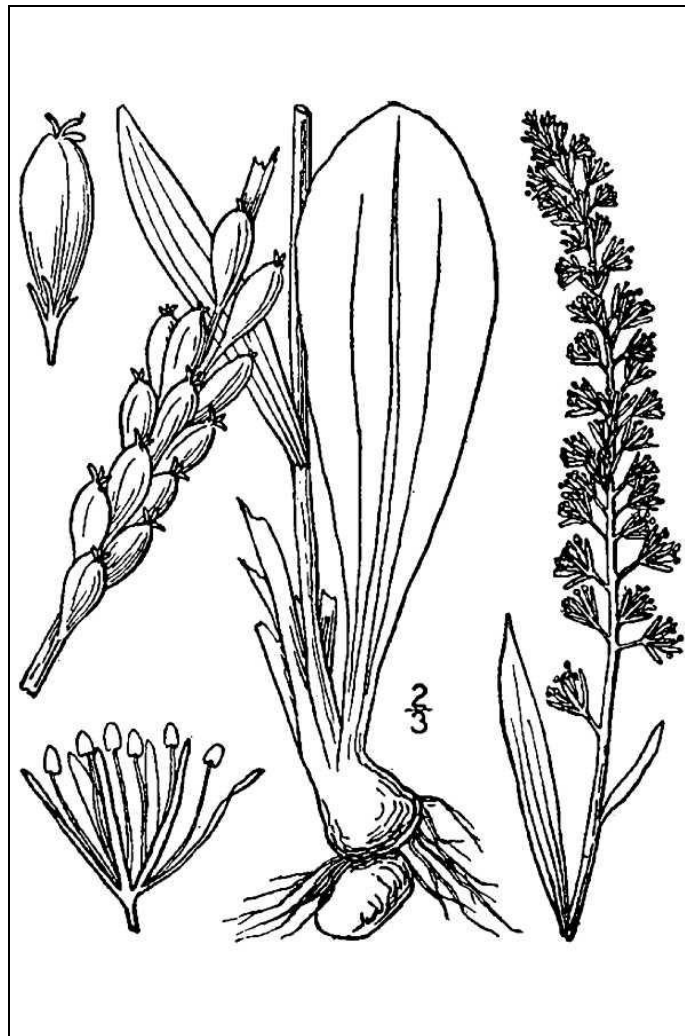
- Conversion of habitat to pine plantations
- Complete overstory removal, which alters understory environment
- Potentially over-collection (?)

Beneficial Management Practices:

- Refrain from harvesting timber on steep slopes; follow Best Management Practices (BMPs) relative to erosion prevention and conservation of streams and stream side habitats
- Selectively harvest timber and minimize ground disturbance in mesic forests

LA River Basins: Pearl, Pontchartrain, Mississippi, Red, Ouachita





USDA-NRCS PLANTS Database / Britton, N.L., and A. Brown.
1913. *An illustrated flora of the northern United States, Canada
and the British Possessions*. Vol. 1: 489.

References:

Larke, J. O., and L. M. Smith. 1994. Rare plants of pine-hardwood forests in Louisiana. Louisiana Department of Wildlife and Fisheries, Baton Rouge.

NatureServe. 2006. NatureServe Explorer: An online encyclopedia of life [web application]. Version 6.1. NatureServe, Arlington, Virginia. Available <http://www.natureserve.org/explorer>.

Radford, A. E., H. E. Ahles, and C. R. Bell. 1968. Manual of the vascular flora of the Carolinas. University of North Carolina Press, Chapel Hill. 1183 pp.