

Rare Plants of Louisiana



Cenchrus tribuloides - dune sandbur Grass Family (Poaceae)

Rarity Rank: S2/G5

	1	2	3	4	5
State		■			
Global					■
	imperiled		rare		secure

Range: Atlantic and Gulf Coasts from NY south to FL and west to LA; exotic in HI

Recognition:

- One of several sandbur grasses that occur on sandy beaches
- Burs larger than those of other sand burs – 9 to 15 mm long by 4 to 7 mm wide, containing 1 spikelet (*C. spinifex*, a more common beach sandbur, has burs narrower than 4 mm wide and that contain more than 1 spikelet)
- Burs densely hairy
- Leaf sheaths noticeably inflated, and leaf blades folded

Flowering Time: June - November

Light Requirement: Full sun

Wetland Indicator Status:

FACU – Usually occurs in uplands but occasionally in wetlands

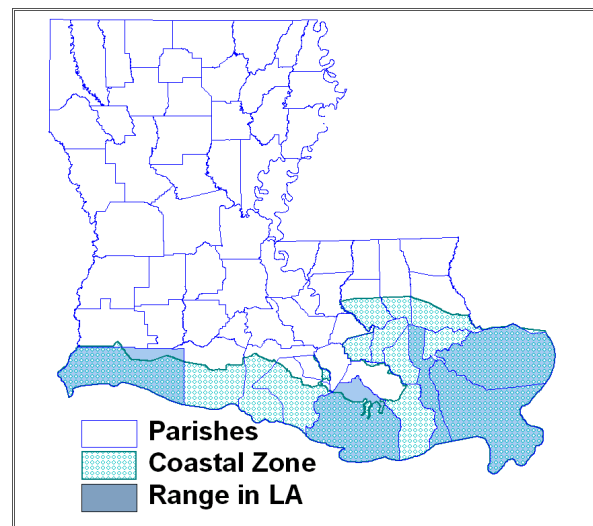
Habitat: High energy Gulf beaches

Threats:

- Damage by human or animal trails and tracks in beach/dune areas
- Off road vehicles
- Beach development

Beneficial Management Practices:

- Shoreline protection
- Protect beach habitat from vehicular traffic, trash dumping, and other degrading human activities

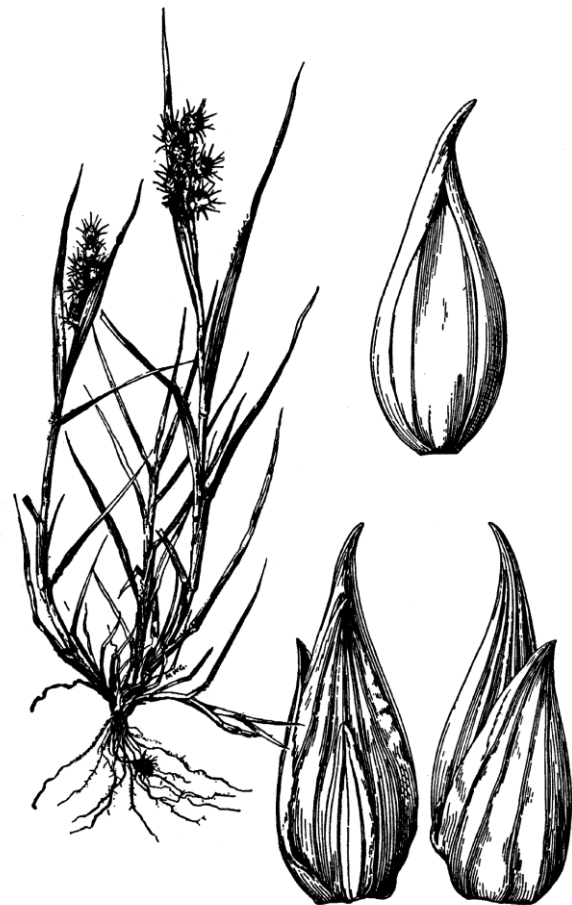


LA River Basins: Pontchartrain, Mississippi, Barataria, Terrebonne, Mermentau, Calcasieu, Sabine

Rare Plants of Louisiana



USDA-NRCS PLANTS Database / Britton, N.L., and A. Brown. 1913. *An illustrated flora of the northern United States, Canada and the British Possessions*. Vol. 1: 167.



USDA-NRCS PLANTS Database / Hitchcock, A.S. (rev. A. Chase). 1950. *Manual of the grasses of the United States*. USDA Miscellaneous Publication No. 200. Washington, DC.

References:

Allen, C.M., D.A. Newman, and H. Winters. 2004. *Grasses of Louisiana*, 3rd edition. Allen's Native Ventures. Pitkin, LA. 374 pp.

Duncan, W. H. and M. B. Duncan. 1987. *The Smithsonian guide to seaside plants of the Gulf and Atlantic Coasts*. Smithsonian Institution, Washington, D.C. 409 pp.

NatureServe. 2007. NatureServe Explorer: An online encyclopedia of life [web application]. Version 6.2. NatureServe, Arlington, VA. Available at <http://naturserve.org/explorer>.