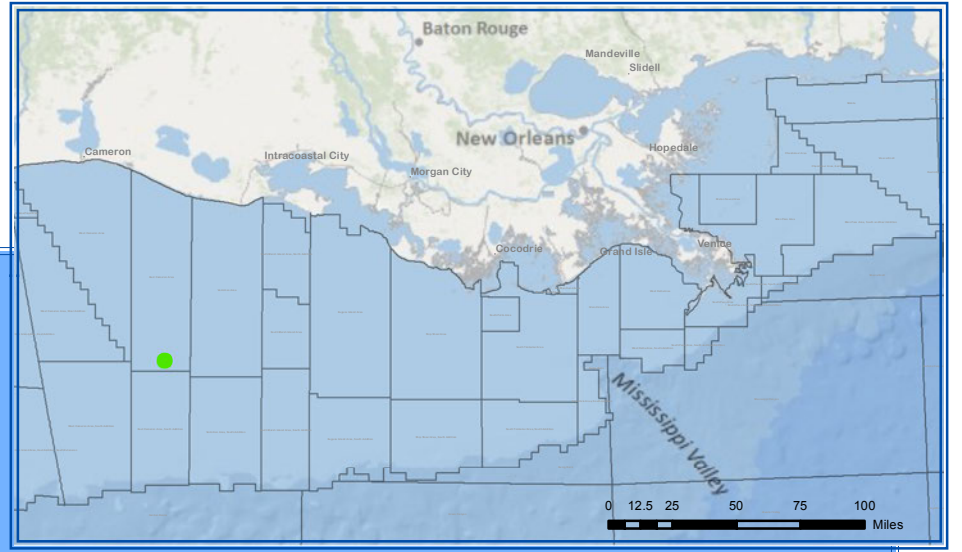
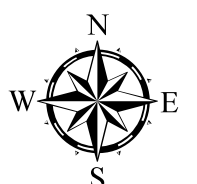
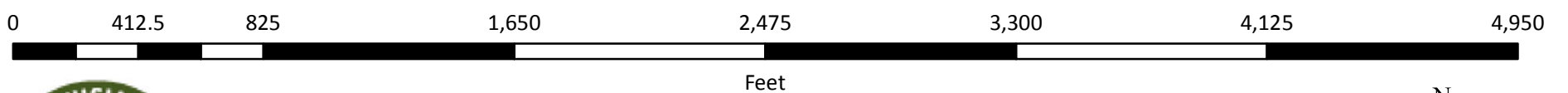
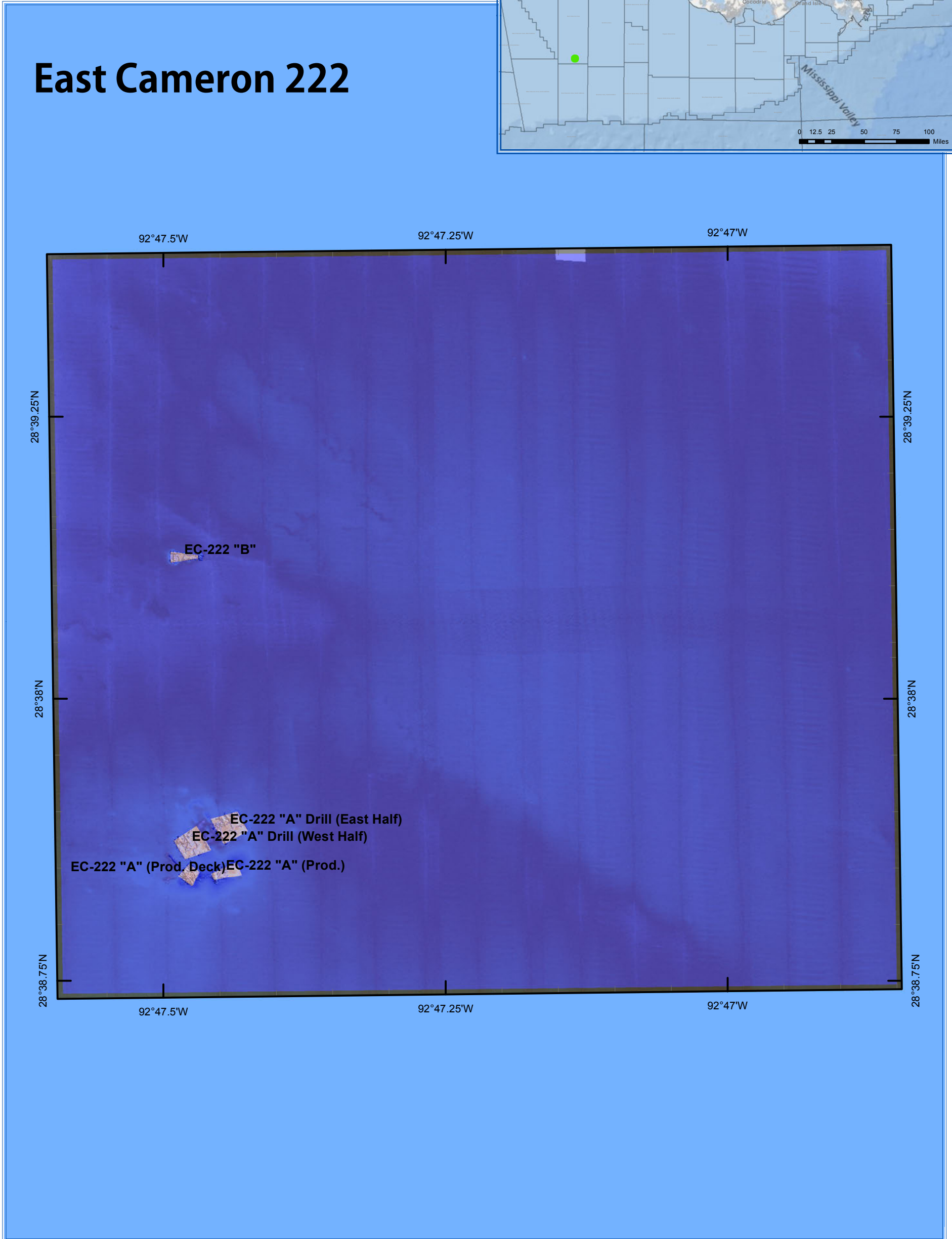


# Louisiana Artificial Reefs



## East Cameron 222



November 14, 2012

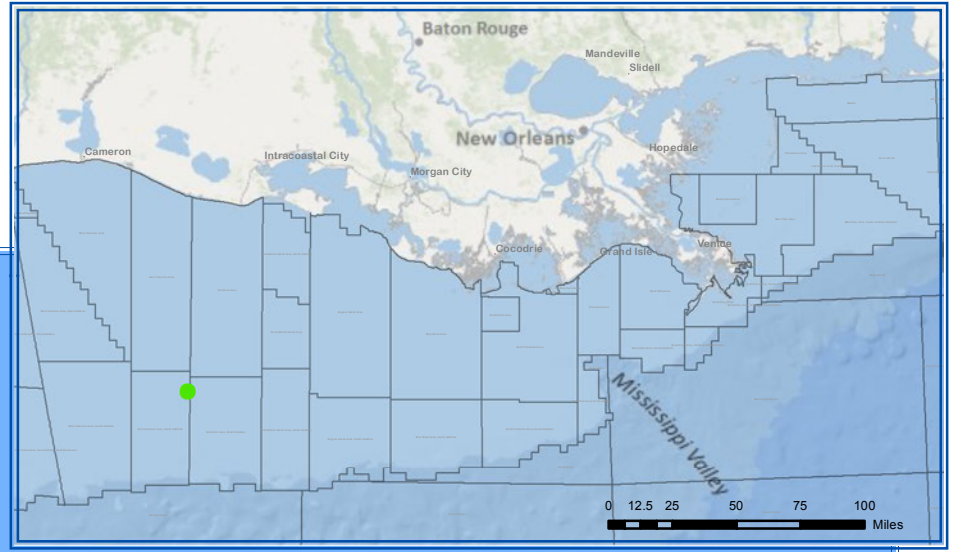
Not for navigation. For informational purposes only.

# Louisiana Artificial Reef Program

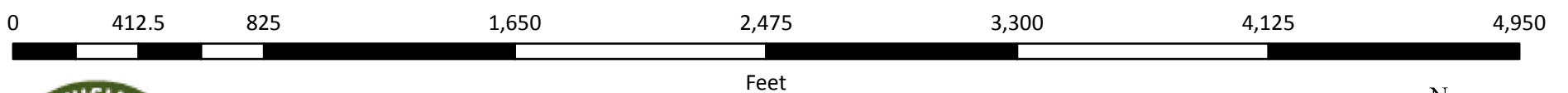
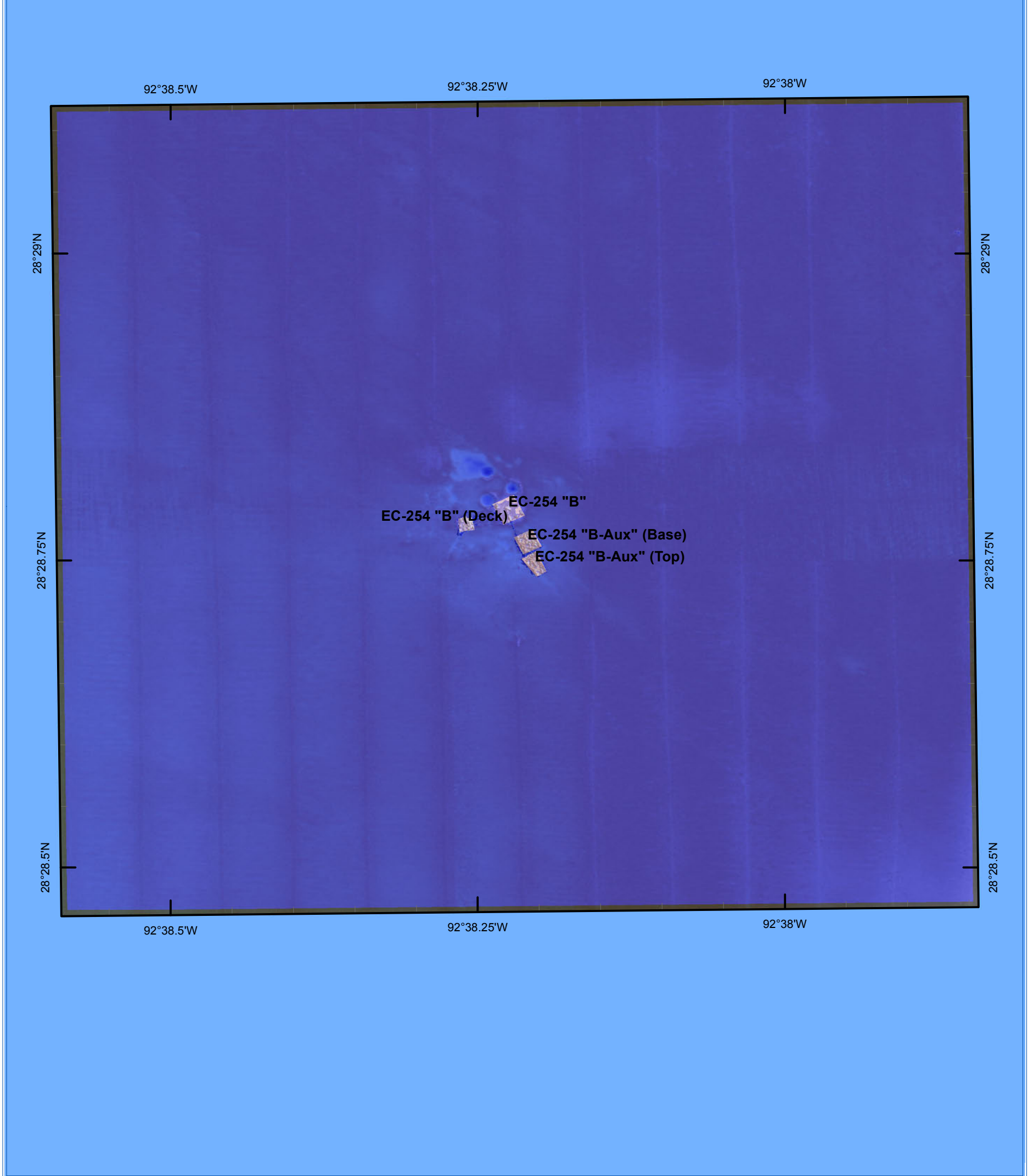


Reef Site Name	Distance Offshore\ Nearest Port	Water Depth	Donor	Structure	Latitude/Longitude NAD83	
East Cameron 222	74 nm - Cameron	122-ft	Energy Resource Technology, Inc.	EC-222 "A" (Prod. Deck)	28° 38.859'	92° 47.485'
				EC-222 "A" (Prod.)	28° 38.861'	92° 47.453'
				EC-222 "A" Drill (East Half)	28° 38.902'	92° 47.450'
				EC-222 "A" Drill (West Half)	28° 38.886'	92° 47.484'
				EC-222 "B"	28° 39.141'	92° 47.490'

# Louisiana Artificial Reefs



## East Cameron 254



November 14, 2012

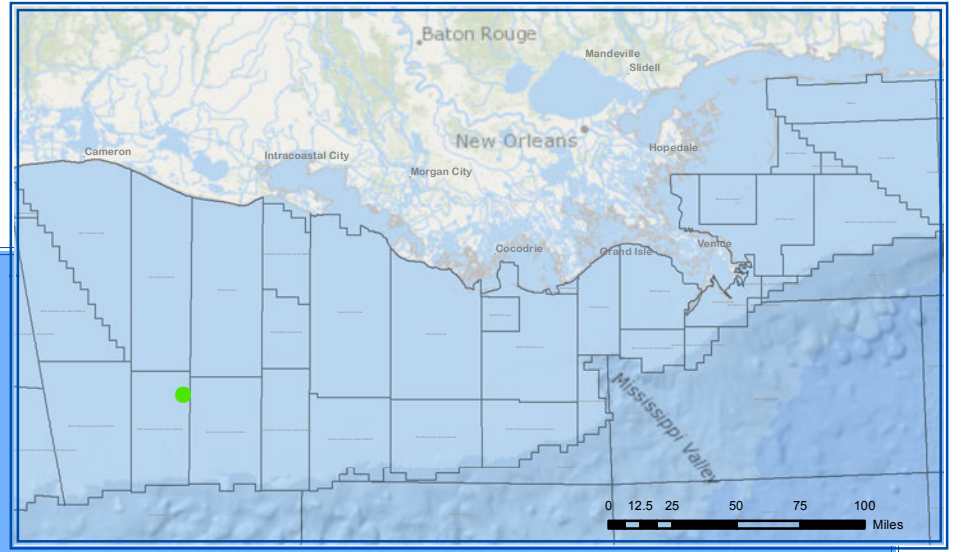
Not for navigation. For informational purposes only.

# Louisiana Artificial Reef Program

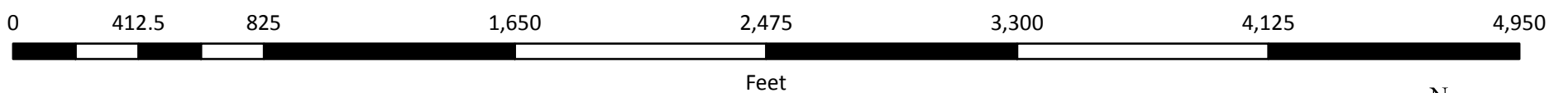
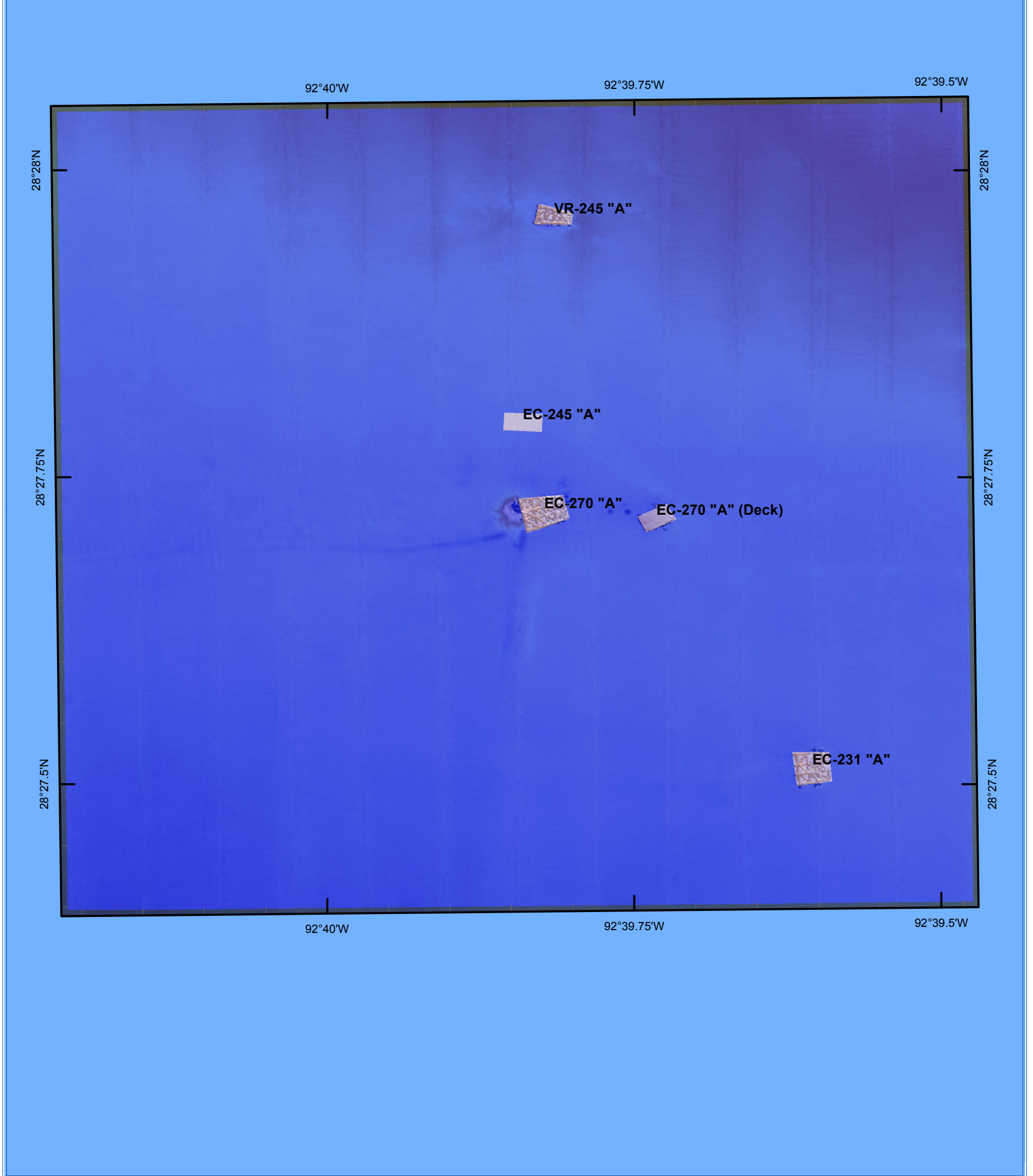


Reef Site Name	Distance Offshore\ Nearest Port	Water Depth	Donor	Structure	Latitude/Longitude NAD83	
East Cameron 254	82 nm - Intracoastal City	166-ft	Merit Energy Company	EC-254 "B"	28° 28.807'	92° 38.233'
				EC-254 "B" (Deck)	28° 28.795'	92° 38.268'
				EC-254 "B-Aux" (Base)	28° 28.780'	92° 38.218'
				EC-254 "B-Aux" (Top)	28° 28.762'	92° 38.211'

# Louisiana Artificial Reefs



## East Cameron 270



Feet



January 17, 2013

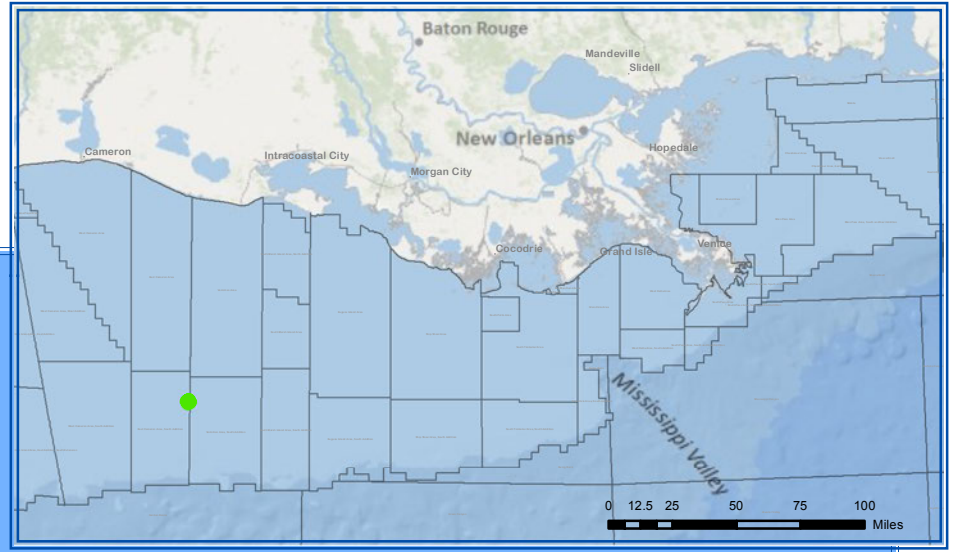
Not for navigation. For informational purposes only.

# Louisiana Artificial Reef Program

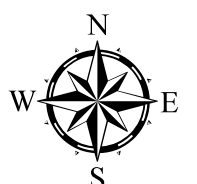
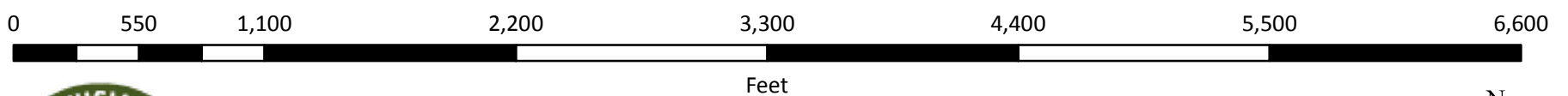
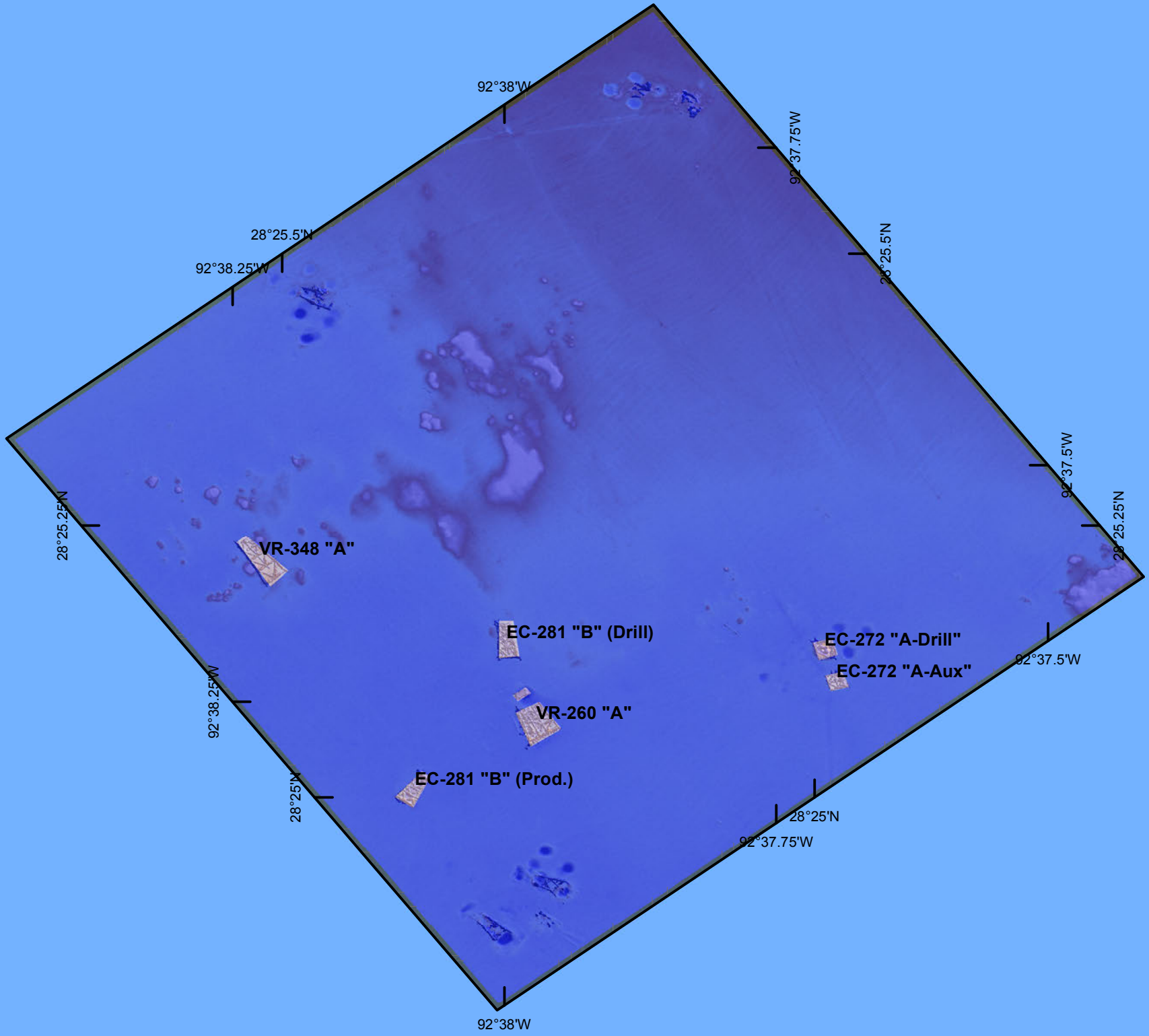


Reef Site Name	Distance Offshore\ Nearest Port	Water Depth	Donor	Structure	Latitude/Longitude NAD83	
East Cameron 270	84 nm - Intracoastal City	170-ft	Chevron USA, Inc.	VR-245 "A"	28° 27.978'	92° 39.823'
			Energy Resource Technology, Inc.	EC-231 "A"	28° 27.529'	92° 39.613'
			Linder Oil Company	EC-245 "A"	28° 27.810'	92° 39.849'
			Pennzoil	EC-270 "A"	28° 27.738'	92° 39.831'
				EC-270 "A" (Deck)	28° 27.732'	92° 39.740'

# Louisiana Artificial Reefs



## East Cameron 272



November 14, 2012

Not for navigation. For informational purposes only.

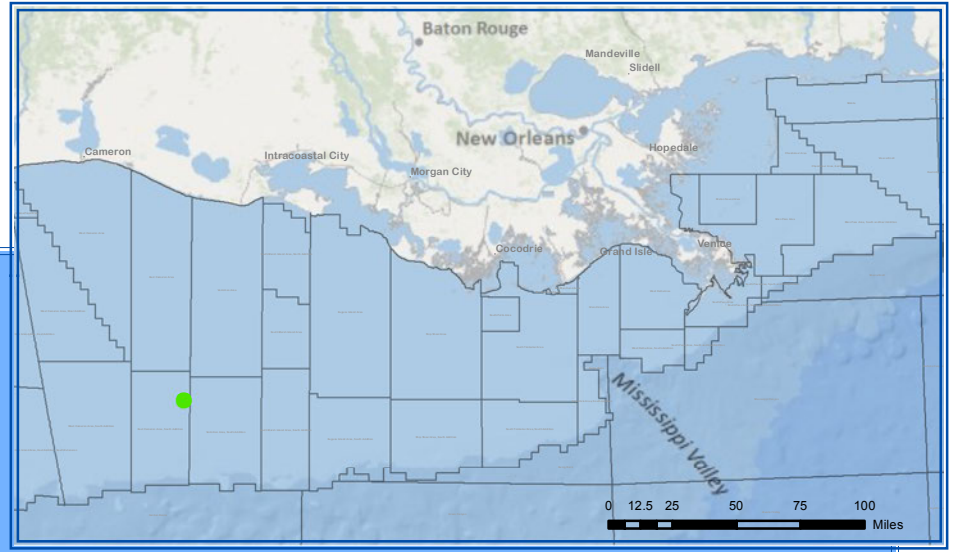
# Louisiana Artificial Reef Program



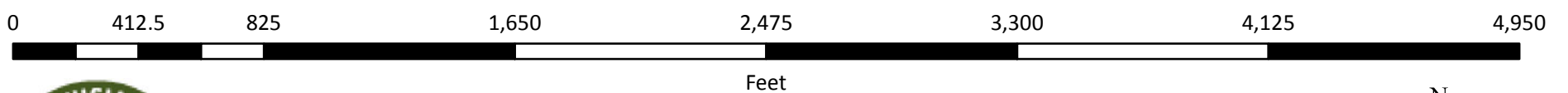
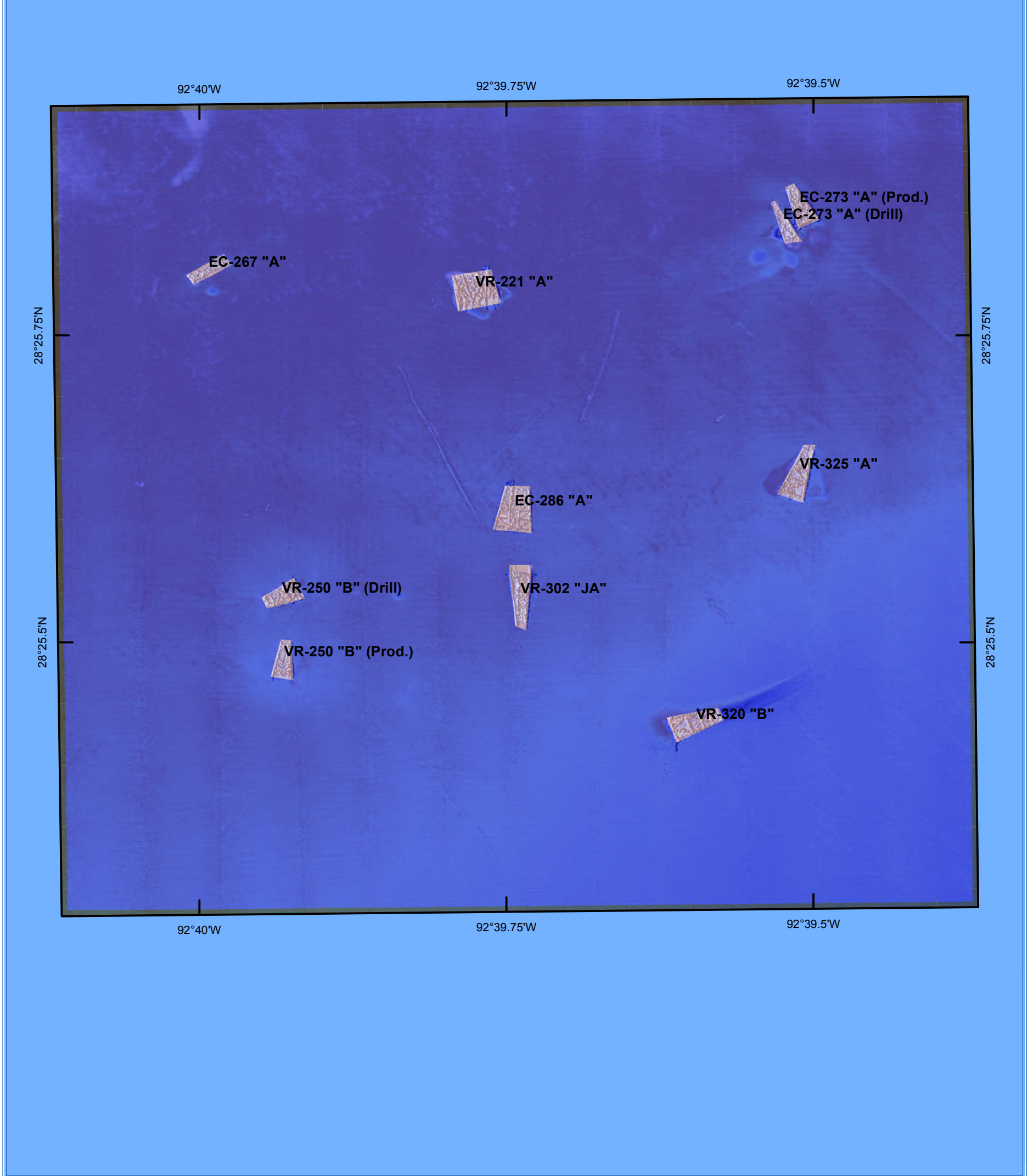
Reef Site Name	Distance Offshore\ Nearest Port	Water Depth	Donor	Structure	Latitude/Longitude NAD83
East Cameron 272	85 nm - Intracoastal City	182-ft	Chevron USA, Inc.	EC-272 "A-Aux"	28° 25.122' 92° 37.703'
				EC-272 "A-Drill"	28° 25.151' 92° 37.713'
				EC-281 "B" (Drill)	28° 25.158' 92° 38.006'
				EC-281 "B" (Prod.)	28° 25.024' 92° 38.090'
				VR-260 "A"	28° 25.084' 92° 37.979'
			Pioneer	VR-348 "A"	28° 25.235' 92° 38.233'



# Louisiana Artificial Reefs



## East Cameron 273



November 14, 2012

Not for navigation. For informational purposes only.

# Louisiana Artificial Reef Program



Reef Site Name	Distance Offshore\ Nearest Port	Water Depth	Donor	Structure	Latitude/Longitude NAD83	
East Cameron 273	86 nm - Intracoastal City	180-ft	Apache Corporation	VR-325 "A"	28° 25.654'	92° 39.519'
			Chevron USA, Inc.	VR-250 "B" (Drill)	28° 25.553'	92° 39.941'
				VR-250 "B" (Prod.)	28° 25.502'	92° 39.939'
			Dalen (PG&E)	EC-267 "A"	28° 25.819'	92° 40.001'
			McMoRan Oil and Gas	EC-286 "A"	28° 25.624'	92° 39.751'
			Nexen	VR-302 "JA"	28° 25.553'	92° 39.747'
			Oryx	VR-320 "B"	28° 25.450'	92° 39.603'
			TDC Energy	VR-221 "A"	28° 25.802'	92° 39.783'
			Texaco	EC-273 "A" (Drill)	28° 25.858'	92° 39.533'
				EC-273 "A" (Prod.)	28° 25.871'	92° 39.520'