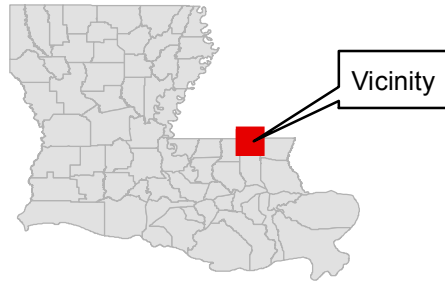
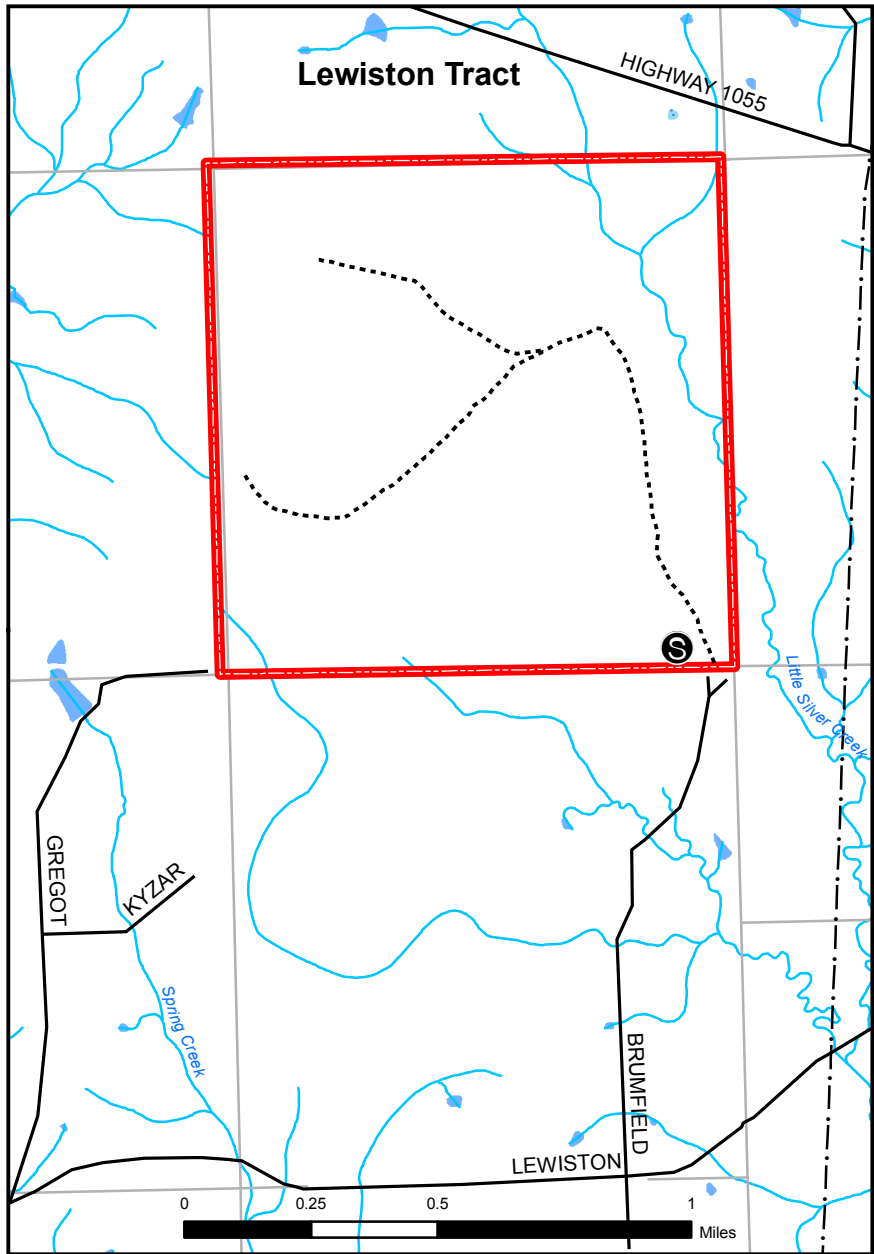


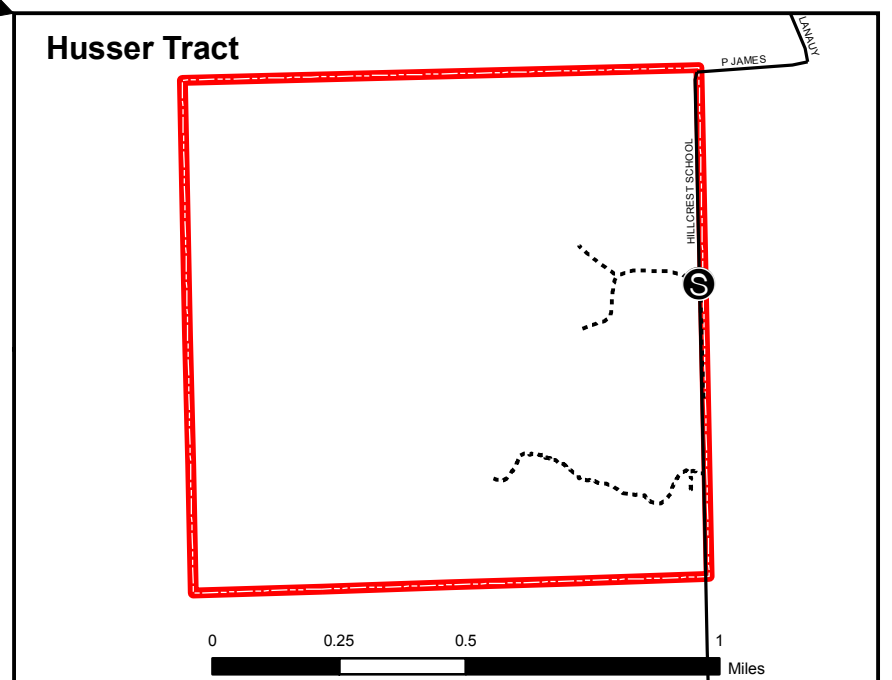
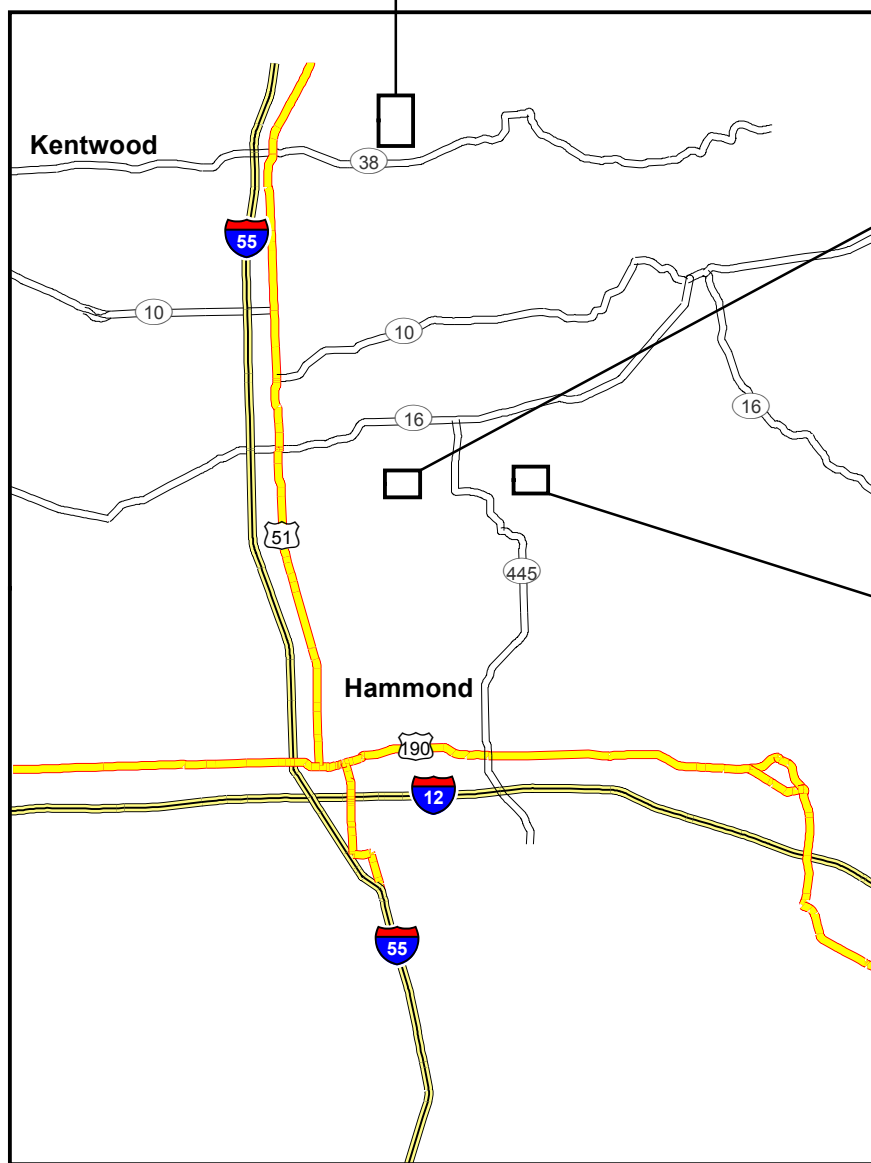
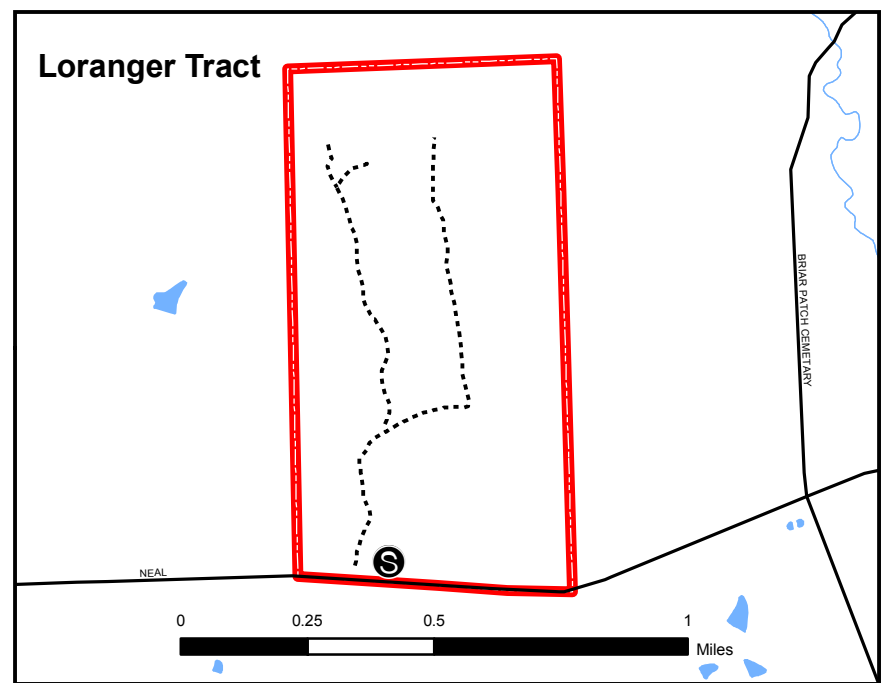
TANGIPAHOA PARISH SCHOOL BOARD WILDLIFE MANAGEMENT AREA

JULY 2017



- Self-Clearing Permit Station
- Interstate
- US Highway
- State Highway
- Improved Road
- Trail
- WMA Boundary
- Section

Refer to Hunting Pamphlet for Additional Regulations and Information.



OWNER

Tangipahoa School Board
1,643 Acres

Self-Clearing Permits
Available at all Self-Clearing Permits Stations

The Louisiana Department of Wildlife and Fisheries (LDWF) makes no representations or warranties whatsoever, whether express, implied, statutory or otherwise, as to the quality and accuracy in producing this map or data set. The user should be aware that the information on which it is based may have come from any of a variety of sources, which are of varying degrees of accuracy. Therefore, LDWF cannot guarantee the accuracy of this map or data set, and shall not be liable to any other person, party, or entity as a result of any reliance on this map or data set and/or any information contained herein or interpreted herefrom. Further, LDWF does not accept any responsibility for the consequences of its use.

