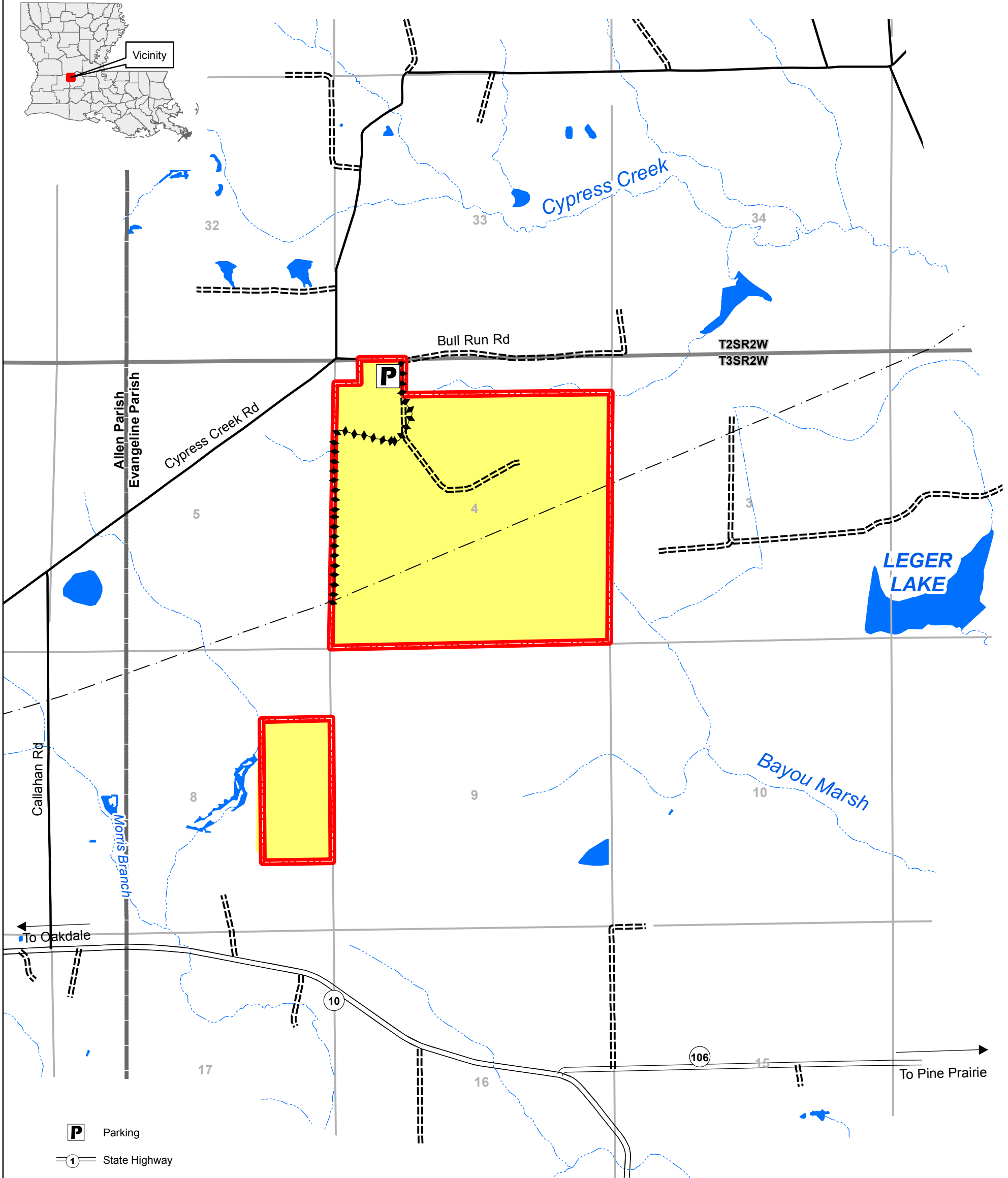
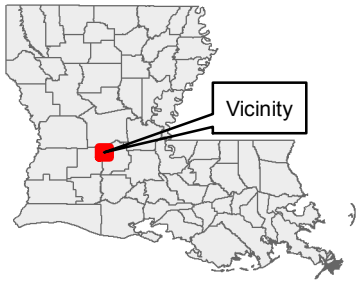


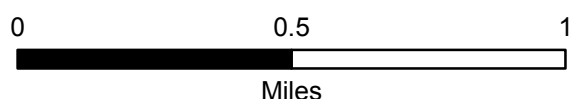
MARSH BAYOU WILDLIFE MANAGEMENT AREA

JULY 2017



- Parking
- State Highway
- Improved Road
- Unimproved Road
- ATV Trail
- Pipeline
- WMA Boundary
- Township & Range
- Section
- Parish Boundary
- Small Game Emphasis Area

OWNER:
LOUISIANA DEPARTMENT OF
WILDLIFE & FISHERIES
655 ACRES



The Louisiana Department of Wildlife and Fisheries (LDWF) makes no representations or warranties whatsoever, whether express, implied, statutory or otherwise, as to the quality and accuracy in producing this map or data set. The user should be aware that the information on which it is based may have come from any of a variety of sources, which are of varying degrees of accuracy. Therefore, LDWF cannot guarantee the accuracy of this map or data set, and shall not be liable to any other person, party, or entity as a result of any reliance on this map or data set and/or any information contained herein or interpreted herefrom. Further, LDWF does not accept any responsibility for the consequences of its use.



Refer to Hunting Pamphlet for Additional Regulations and Information.