



# Rigs-to-Reefs Program

## Policy Overview



## Rigs-to-Reefs Policy Addendum (2009):



- Outlined enhanced reviewing and approval guidelines in response to the Post-Hurricane Katrina regulatory environment
- “Put the Brakes” on dozens of reef proposals incorporating platforms destroyed or toppled during the 2005-2008 hurricane seasons that were not adequately prepared for reefing and outside traditional reef planning areas
- Helped the agency tackle public criticism and NGO assertions that Rigs-to-Reefs was becoming a *de facto* “Ocean Dumping Program.”

## Rigs-to-Reefs Interim Policy Document (2013-07):



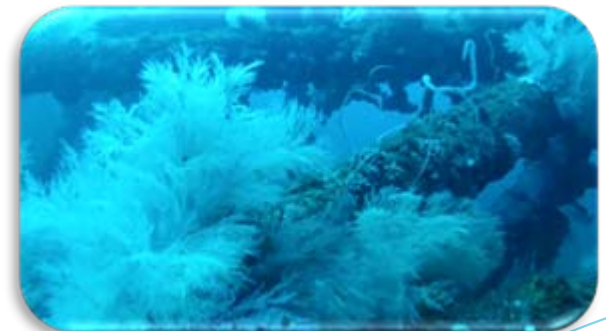
- **The conclusion of the Federal, State, and public coordination recommended in the 2009 Rigs-to-Reefs Policy Addendum**
- **Evaluates reef proposals on a case by case basis**
  - **Evaluated for adherence to engineering and environmental standards**
  - **Removes the mandatory 5 mile buffer zone between reefs**
  - **Allows reefing in place where appropriate**
- **Allows for time extensions to regulatory deadlines provided companies are actively pursuing a viable reef option**
- **Discourages the use of explosives for structures proposed for reefing**
- **Eliminates storm-toppled platforms from consideration as reefs**



## Rigs-to-Reefs Alternative to Onshore Disposal

**BSEE continues to support and encourage the reuse of obsolete platform jackets as artificial reef material and will grant a departure from removal requirements under 30 CFR §250.1725(a) and applicable lease obligations provided that:**

- **The structure becomes part of a State reef program that complies with the National Artificial Reef Plan**
- **The State agency acquires a permit from the Army Corps of Engineers and accepts title and liability for the reefed structure once removal and reefing operations are concluded**
- **The operator satisfies any U.S. Coast Guard navigational requirements for the structure**
- **The reefing proposal complies with BSEE engineering and environmental reviewing standards.**





**Douglas Peter**

**Artificial Reef Coordinator**

**douglas.peter@bsee.gov**

**(504) 736-7514**

**[www.bsee.gov](http://www.bsee.gov)**

