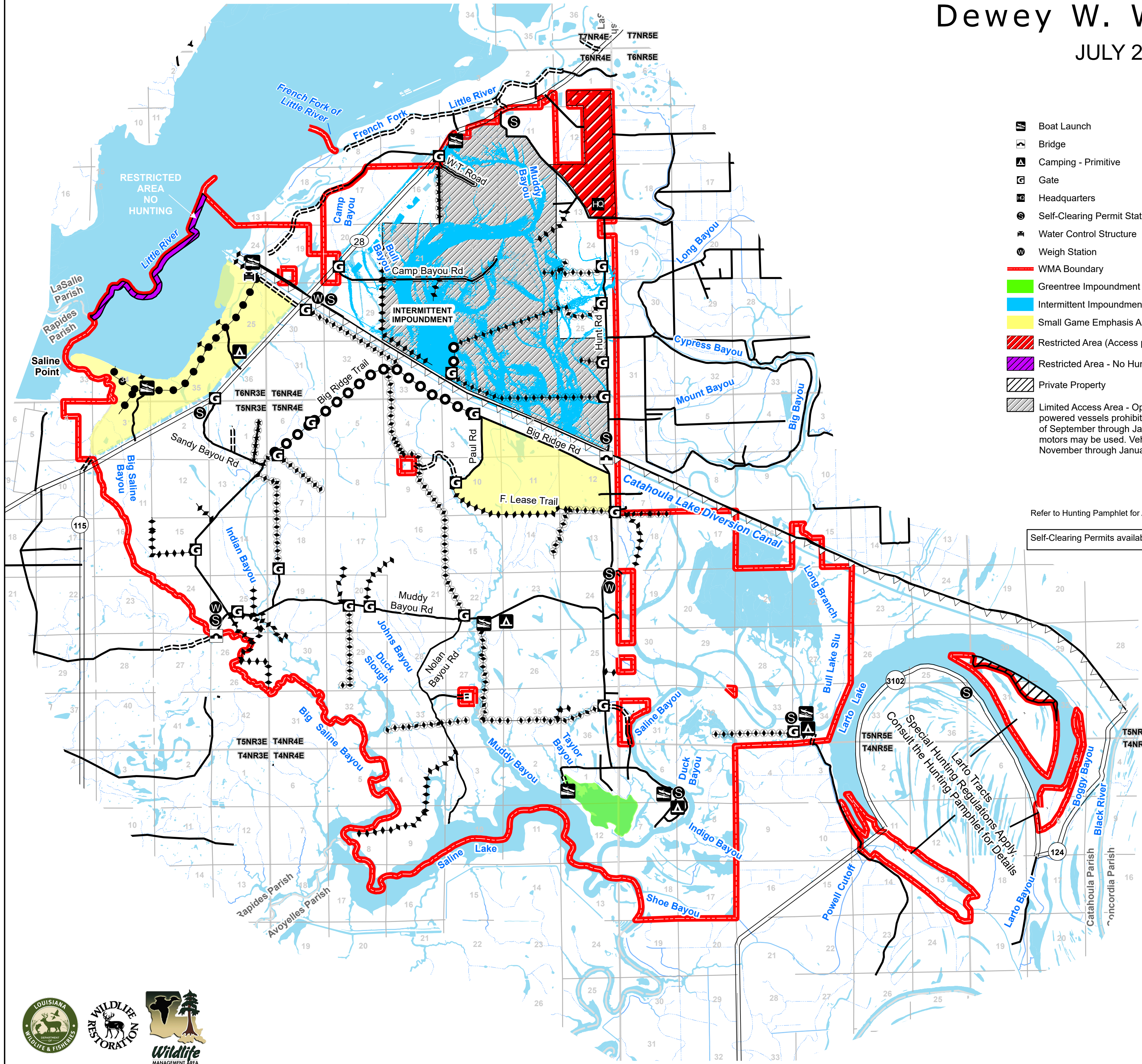


# Dewey W. Wills WMA

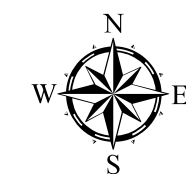
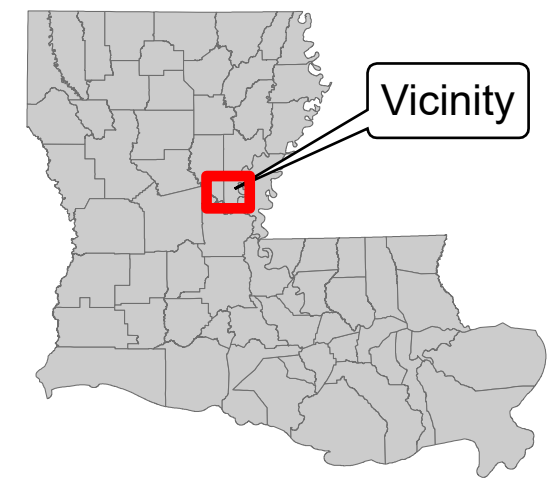
JULY 2025



- Boat Launch
- Bridge
- Camping - Primitive
- Gate
- Headquarters
- Self-Clearing Permit Station
- Water Control Structure
- Weigh Station
- WMA Boundary
- Greentree Impoundment
- Intermittent Impoundment
- Small Game Emphasis Area
- Restricted Area (Access prohibited)
- Restricted Area - No Hunting
- Private Property
- Limited Access Area - Operation of internal combustion powered vessels prohibited during the months of September through January. Trolling motors may be used. Vehicles prohibited November through January.
- State Highway
- Improved Road
- Unimproved Road
- ATV Trail
- ATV/UTV Trail (Physically Challenged)
- Year-Round ATV Trail
- ATV/UTV Trail
- Year-Round ATV/UTV Trail
- Levee
- Parish Boundary
- Township & Range
- Section

Refer to Hunting Pamphlet for Additional Regulations and Information.

Self-Clearing Permits available at all Self-Clearing Permit Stations



0 1 2 Miles

## OWNERS

- LOUISIANA DEPARTMENT OF WILDLIFE & FISHERIES  
62,108 ACRES
- LASALLE PARISH SCHOOL BOARD  
1,530 ACRES
- US ARMY CORPS OF ENGINEERS  
256 ACRES
- US ARMY CORPS OF ENGINEERS  
Lt Catavoy  
1,240 ACRES

The Louisiana Department of Wildlife and Fisheries (LDWF) makes no representations or warranties whatsoever, whether express, implied, statutory or otherwise, as to the quality and accuracy in producing this map or data set. The user should be aware that the information on which it is based may have come from any of a variety of sources, which are of varying degrees of accuracy. Therefore, LDWF cannot guarantee the accuracy of this map or data set, and shall not be liable to any other person, party, or entity as a result of any reliance on this map or data set and/or any information contained herein or interpreted herefrom. Further, LDWF does not accept any responsibility for the consequences of its use.





# ATTENTION HUNTERS

Each year several Louisiana black bears are illegally killed during the hunting season. Since 1992, the Louisiana black bear has been protected because of its threatened status under the Endangered Species Act.

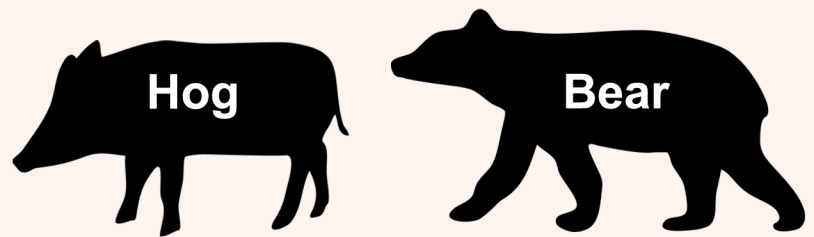
Restoration and conservation efforts of the La. Department of Wildlife and Fisheries (LDWF), U.S. Fish and Wildlife Service, Black Bear Conservation Coalition and many private landowners have led to increasing numbers of black bears.

Effective in March of 2016, the Louisiana black bear was removed from the list of Federally Threatened and Endangered Species due to recovery. Bears in Louisiana are still protected under state law with fines and penalties up to \$10,000.

Hunters are urged to support bear conservation efforts and report illegal kills. This support will aid recovery of the Louisiana black bear and help bring about the day when legal bear hunting will once again occur in Louisiana.

## Hogs and Bears Look Alike

### *Know Your Target!*



**IT IS A VIOLATION OF STATE LAW  
TO KILL A BEAR, WITH FINES UP  
TO \$10,000, LOSS OF HUNTING  
PRIVILEGES, AND/OR JAIL.**

**CASH REWARDS**

FOR INFORMATION LEADING TO THE  
ARREST OF PERSONS HARMING A

**LOUISIANA BLACK BEAR**

**1-800-442-2511**

**YOU WILL REMAIN ANONYMOUS**

*for more information call the Louisiana Department  
of Wildlife and Fisheries at 318-343-4044*