

LOGGY BAYOU

Wildlife Management Area

JULY 2024



OWNER:

LOUISIANA DEPARTMENT OF WILDLIFE & FISHERIES
4,085 ACRES

STATE LAND OFFICE
184 ACRES

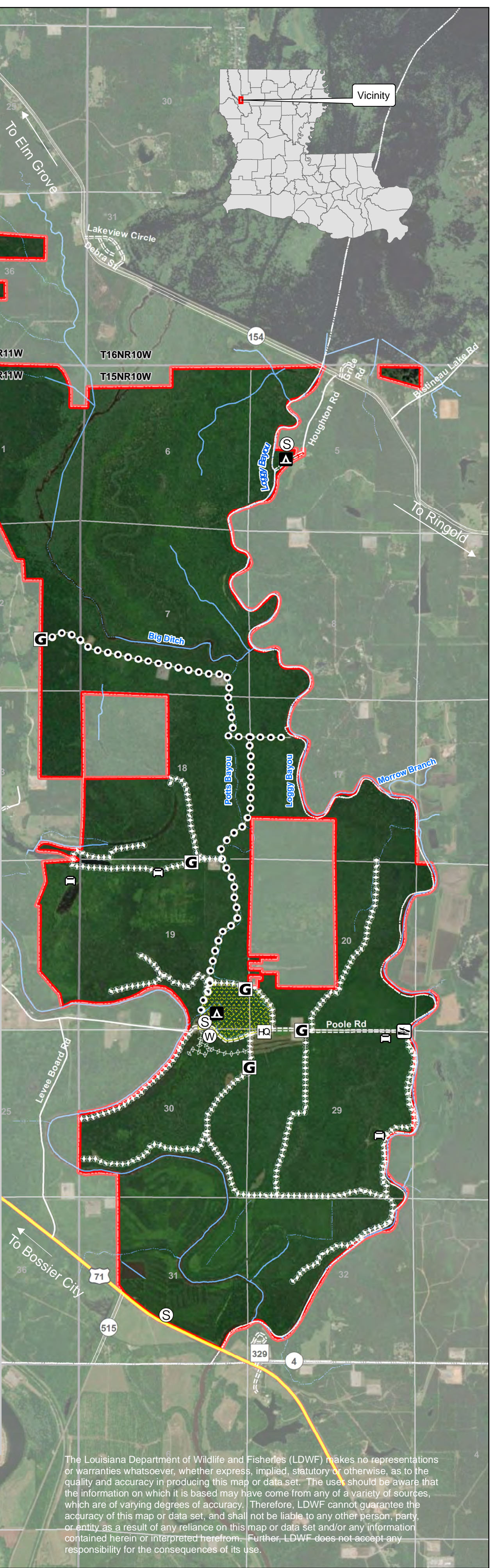
UNITED STATES ARMY CORPS OF ENGINEERS
2,189 ACRES

- Boat Launch
- Camping - Primitive
- Headquarters
- Self-Clearing Permit Station
- Water Control Structure
- Weigh Station
- US Highway
- State Highway
- Improved Road
- Unimproved Road
- ATV Trail (Physically Challenged)
- ATV/UTV Trail
- Year-Round ATV/UTV Trail
- Parish Boundary
- WMA Boundary
- Township & Range
- Section
- Limited Use Area (Hunting restricted to small game and archery only for deer)

Refer to Hunting Pamphlet for Additional Regulations and Information.

Self-Clearing Permits available at all Self-Clearing Permit Stations.

0 1
Miles



The Louisiana Department of Wildlife and Fisheries (LDWF) makes no representations or warranties whatsoever, whether express, implied, statutory or otherwise, as to the quality and accuracy in producing this map or data set. The user should be aware that the information on which it is based may have come from any of a variety of sources, which are of varying degrees of accuracy. Therefore, LDWF cannot guarantee the accuracy of this map or data set, and shall not be liable to any other person, party, or entity as a result of any reliance on this map or data set and/or any information contained herein or interpreted herefrom. Further, LDWF does not accept any responsibility for the consequences of its use.

