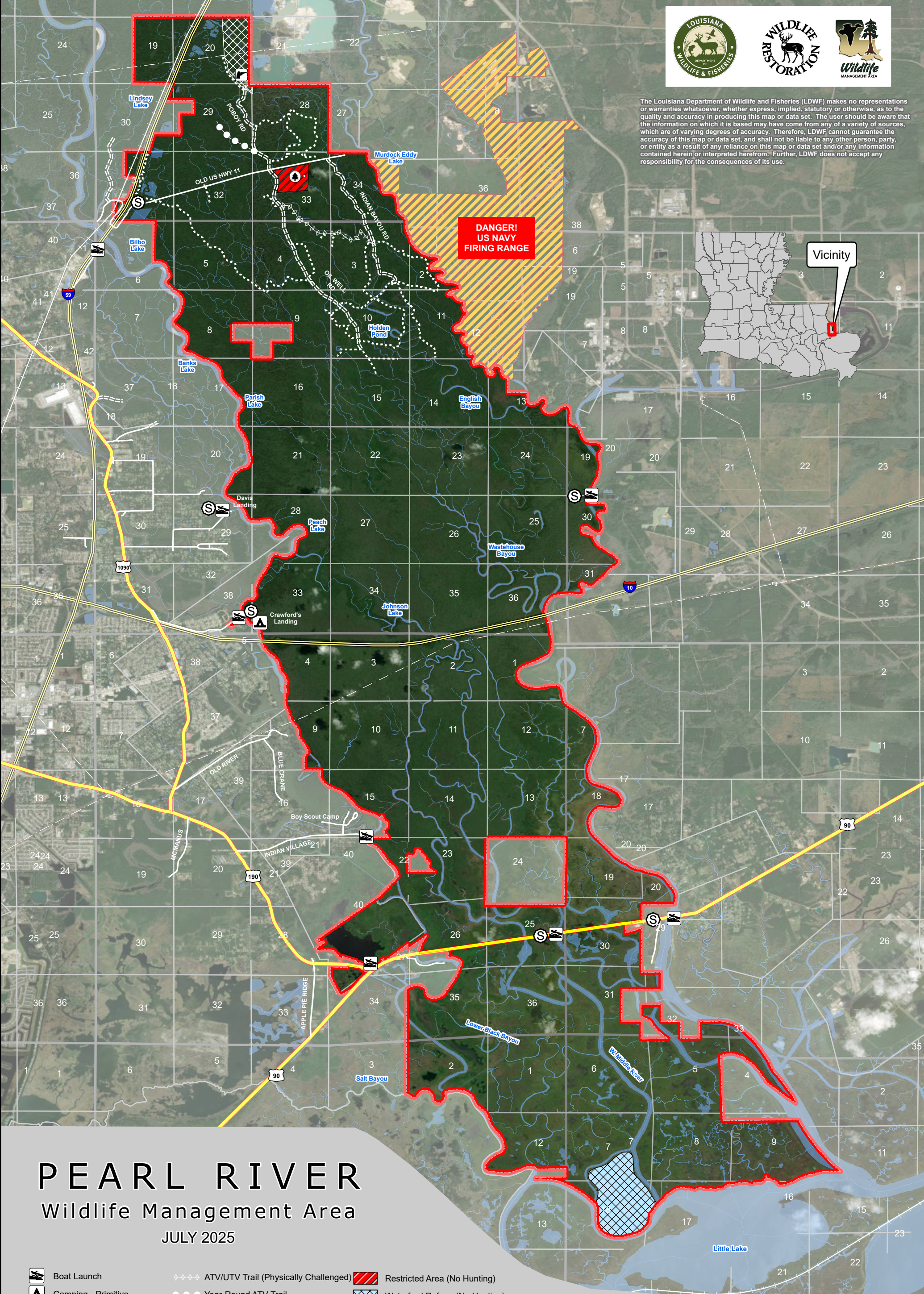




The Louisiana Department of Wildlife and Fisheries (LDWF) makes no representations or warranties whatsoever, whether express, implied, statutory or otherwise, as to the quality and accuracy in producing this map or data set. The user should be aware that the information on which it is based may have come from any of a variety of sources, which are of varying degrees of accuracy. Therefore, LDWF cannot guarantee the accuracy of this map or data set, and shall not be liable to any other person, party, or entity as a result of any reliance on this map or data set and/or any information contained herein or interpreted herefrom. Further, LDWF does not accept any responsibility for the consequences of its use.



# PEARL RIVER

## Wildlife Management Area

JULY 2025

- Boat Launch

Camping - Primitive

Self-Clearing Permit Station

Shooting Range

Interstate

US Highway

Improved Road

Unimproved Road

Railroad
- ATV/UTV Trail (Physically Challenged)

Year-Round ATV Trail

Nature Trail

Trail

Boardwalk

Pipeline

Township & Range

Section

WMA Boundary
- Restricted Area (No Hunting)

Waterfowl Refuge (No Hunting)

Shooting Range Safety Zone (Access Prohibited)

DANGER! US Navy Firing Range
- Self-Clearing Permits available at all Self-Clearing Permit Stations

Refer to Hunting Pamphlet for Additional Regulations and Information

N

**OWNER:**  
Louisiana Department of  
Wildlife & Fisheries  
35,619 Acres

0 0.5 1  
Miles