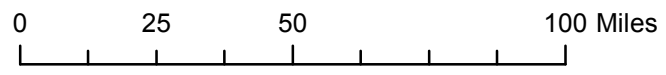
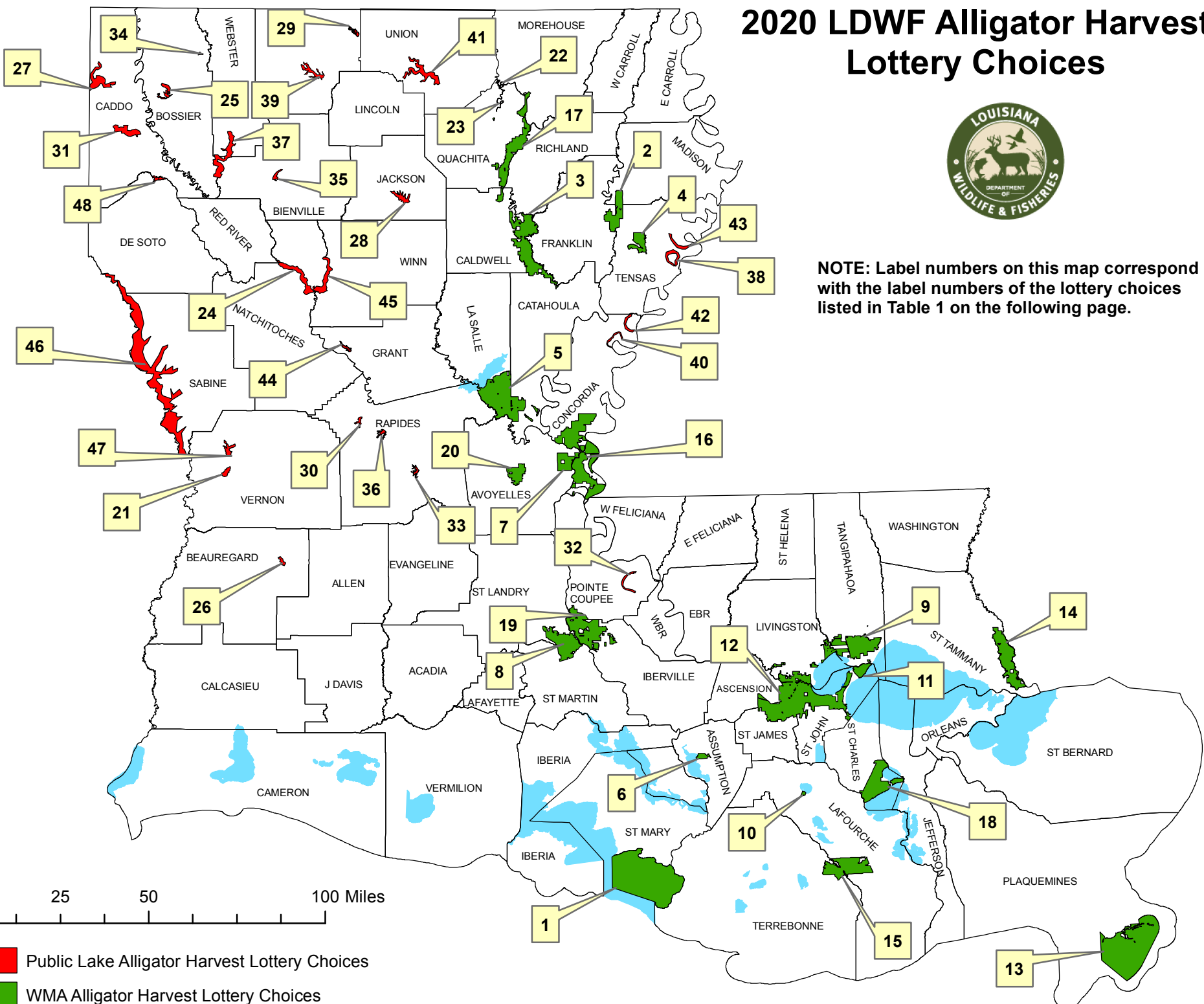


2020 LDWF Alligator Harvest Lottery Choices



NOTE: Label numbers on this map correspond with the label numbers of the lottery choices listed in Table 1 on the following page.



- Public Lake Alligator Harvest Lottery Choices
- WMA Alligator Harvest Lottery Choices

Table 1. 2020 Lottery choices and quota information.

LABEL NUMBER	AREA NAME	AREA TYPE	AVAILABLE HUNTER OPPORTUNITIES	TAGS AVAILABLE FOR EACH HUNTER	*2019 APPLICANT SUCCESS RATE (%)	HUNT AREA MANAGER'S CONTACT INFORMATION
1	Atchafalaya Delta WMA	WMA	10	3	36	Vaughan McDonald; (225) 765-2708; vmcdonald@wlf.la.gov
2	Big Lake WMA	WMA	7	3	18	Mitch McGee; (318) 343-4044; MMcGee@wlf.la.gov
3	Boeuf WMA	WMA	14	3	61	Mitch McGee; (318) 343-4044; MMcGee@wlf.la.gov
4	Buckhorn WMA	WMA	6	3	29	Mitch McGee; (318) 343-4044; MMcGee@wlf.la.gov
5	Dewey W Wills WMA	WMA	12	3	35	Cliff Dailey; (318) 487-5885; adailey@wlf.la.gov
6	Elm Hall WMA	WMA	10	3	33	Tony Vidrine; (337) 262-2080; tvidrine@wlf.la.gov
7	Grassy Lake WMA	WMA	9	3	100	Tony Vidrine; (337) 262-2080; tvidrine@wlf.la.gov
8	Indian Bayou (USACOE)	WMA	6	3	14	Tony Vidrine; (337) 262-2080; tvidrine@wlf.la.gov
9	Joyce WMA	WMA	15	3	21	Bradley Breland; (985) 543-4777; bbreland@wlf.la.gov
10	Lake Boeuf WMA	WMA	2	3	29	Vaughan McDonald; (225) 765-2708; vmcdonald@wlf.la.gov
11	Manchac WMA	WMA	10	3	43	Bradley Breland; (985) 543-4777; bbreland@wlf.la.gov
12	Maurepas Swamp WMA	WMA	20	3	16	Bradley Breland; (985) 543-4777; bbreland@wlf.la.gov
13	Pass A Loutre WMA	WMA	10	3	32	Vaughan McDonald; (225) 765-2708; vmcdonald@wlf.la.gov
14	Pearl River WMA	WMA	15	3	16	Bradley Breland; (985) 543-4777; bbreland@wlf.la.gov
15	Pointe Aux Chenes WMA	WMA	10	3	40	Vaughan McDonald; (225) 765-2708; vmcdonald@wlf.la.gov
16	Richard K. Yancey WMA	WMA	50	3	30	Tony Vidrine; (337) 262-2080; tvidrine@wlf.la.gov
17	Russell Sage WMA	WMA	8	3	47	Mitch McGee; (318) 343-4044; MMcGee@wlf.la.gov
18	Salvador/Timken WMAs	WMA	10	3	19	Vaughan McDonald; (225) 765-2708; vmcdonald@wlf.la.gov
19	Sherburne WMA	WMA	7	3	11	Tony Vidrine; (337) 262-2080; tvidrine@wlf.la.gov
20	Spring Bayou WMA	WMA	20	3	49	Tony Vidrine; (337) 262-2080; tvidrine@wlf.la.gov
21	Anacoco Lake	Public Lake	4	3	12	Wendell Smith; (337) 491-2575; wsmith@wlf.la.gov
22	Bartholomew Lake	Public Lake	3	3	38	Mitch McGee; (318) 343-4044; MMcGee@wlf.la.gov
23	Bayou Desiard North	Public Lake	3	3	12	Mitch McGee; (318) 343-4044; MMcGee@wlf.la.gov
24	Black Lake	Public Lake	6	3	21	Chuck Jones; (318) 487-5885; cjones@wlf.la.gov
25	Black/Cypress Lake	Public Lake	15	3	60	Jeff Johnson; (318) 371-3050; jjohnson@wlf.la.gov
26	Bundick Lake	Public Lake	2	3	67	Wendell Smith; (337) 491-2575; wsmith@wlf.la.gov
27	Caddo Lake	Public Lake	5	3	14	Jeff Johnson; (318) 371-3050; jjohnson@wlf.la.gov
28	Caney Lake	Public Lake	4	3	44	Jeff Johnson; (318) 371-3050; jjohnson@wlf.la.gov
29	Corney Lake	Public Lake	2	3	9	Jeff Johnson; (318) 371-3050; jjohnson@wlf.la.gov
30	Cotile Lake	Public Lake	3	3	27	Chuck Jones; (318) 487-5885; cjones@wlf.la.gov
31	Cross Lake	Public Lake	15	3	37	Jeff Johnson; (318) 371-3050; jjohnson@wlf.la.gov
32	False River	Public Lake	2	3	22	Tony Vidrine; (337) 262-2080; tvidrine@wlf.la.gov
33	Indian Creek	Public Lake	2	3	22	Chuck Jones; (318) 487-5885; cjones@wlf.la.gov
34	Ivan Lake	Public Lake	2	3	17	Jeff Johnson; (318) 371-3050; jjohnson@wlf.la.gov
35	Kepler Lake	Public Lake	10	3	59	Jeff Johnson; (318) 371-3050; jjohnson@wlf.la.gov
36	Kincaid Lake	Public Lake	2	3	29	Chuck Jones; (318) 487-5885; cjones@wlf.la.gov
37	Lake Bistineau	Public Lake	15	3	71	Jeff Johnson; (318) 371-3050; jjohnson@wlf.la.gov
38	Lake Bruin	Public Lake	5	3	36	Mitch McGee; (318) 343-4044; MMcGee@wlf.la.gov
39	Lake Claiborne	Public Lake	2	3	N/A	Jeff Johnson; (318) 371-3050; jjohnson@wlf.la.gov
40	Lake Concordia	Public Lake	10	3	45	Mitch McGee; (318) 343-4044; MMcGee@wlf.la.gov

41	Lake D' Arbonne	Public Lake	3	3	75	Mitch McGee; (318) 343-4044; MMcGee@wlf.la.gov
42	Lake St. John	Public Lake	10	3	43	Mitch McGee; (318) 343-4044; MMcGee@wlf.la.gov
43	Lake St. Joseph	Public Lake	15	3	23	Mitch McGee; (318) 343-4044; MMcGee@wlf.la.gov
44	Nantachie Lake	Public Lake	2	3	50	Chuck Jones; (318) 487-5885; cjones@wlf.la.gov
45	Saline Lake	Public Lake	6	3	26	Chuck Jones; (318) 487-5885; cjones@wlf.la.gov
46	Toledo Bend	Public Lake	9	3	12	Chuck Jones; (318) 487-5885; cjones@wlf.la.gov
47	Vernon Lake	Public Lake	3	3	60	Wendell Smith; (337) 491-2575; wsmith@wlf.la.gov
48	Wallace Lake	Public Lake	10	3	40	Jeff Johnson; (318) 371-3050; jjohnson@wlf.la.gov

* was the calculated chance of being selected of those who applied for this hunt in 2019

N/A are new opportunities for 2020