



UPDATE ON SPOTTED SEATROUT

Jason Adriance | FTF Meeting | March 24, 2022

Management History

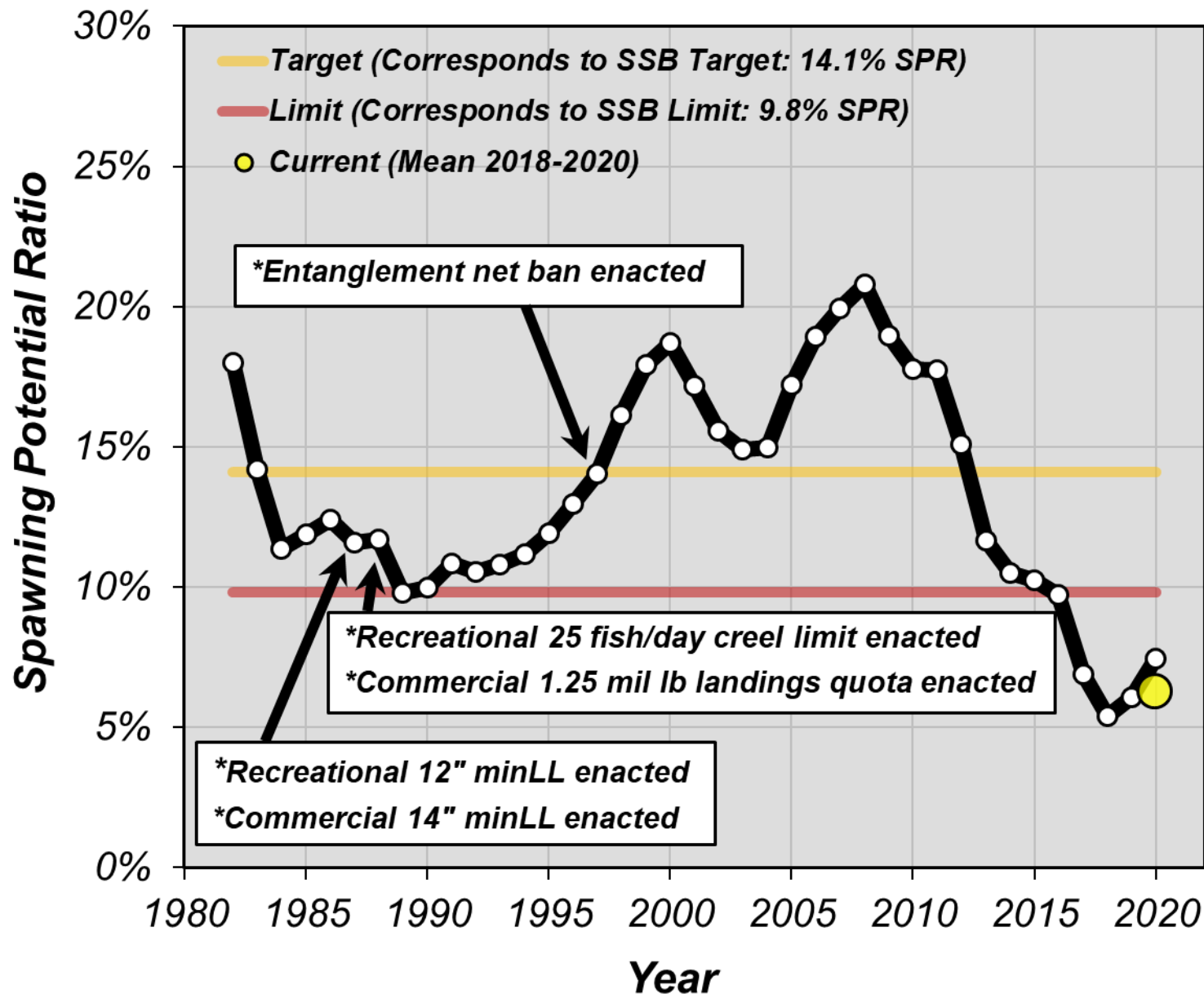


Conservation Measures Timeline

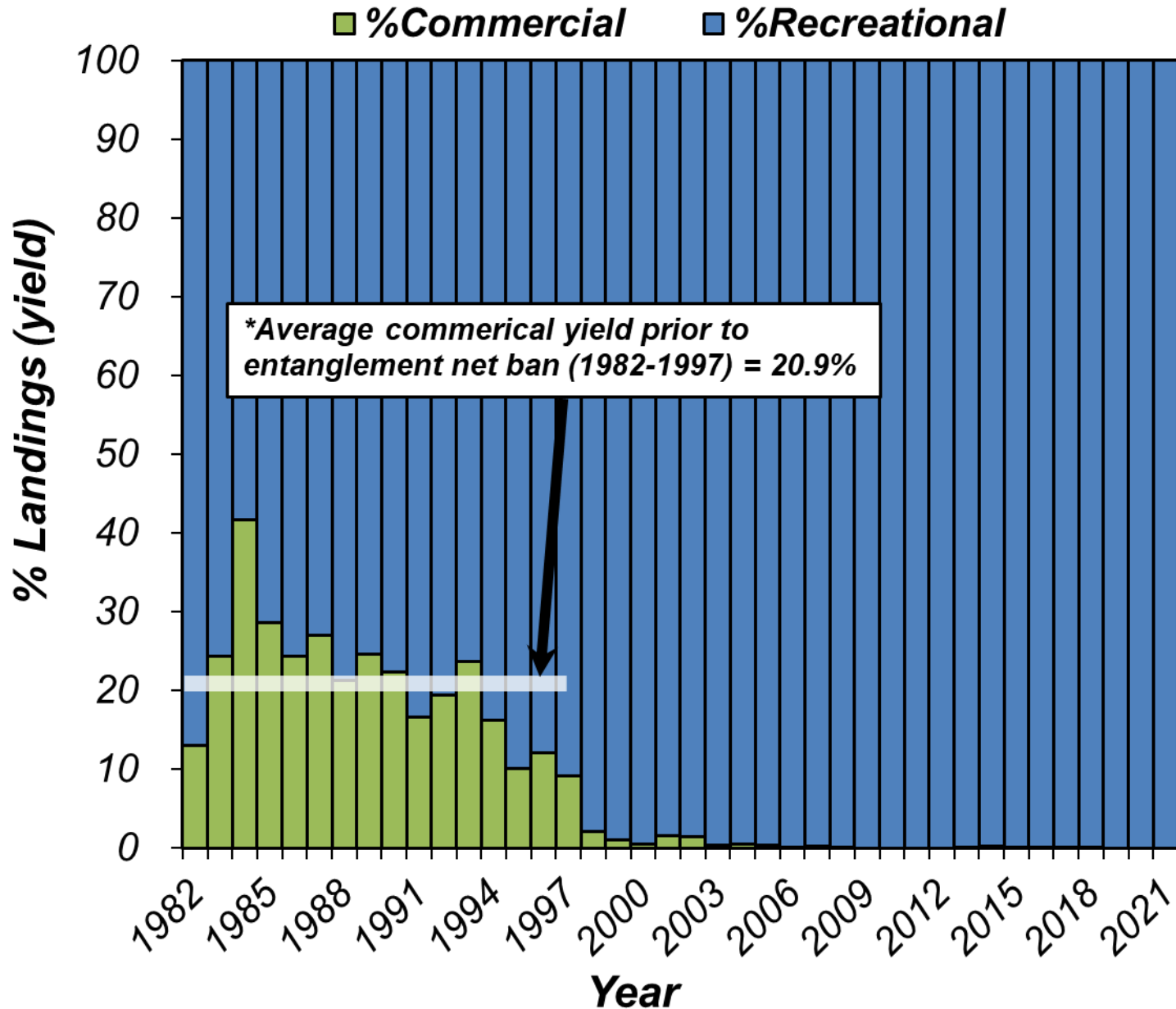
- **1977: Recreational 50 fish/day creel limit implemented**
- **1984: Commercial 12" MinimumLL implemented**
- **1987: Recreational 12" MinimumLL implemented**
- **1987: Commercial 14" MinimumLL implemented**
- **1988: Recreational 25 fish/day creel limit implemented**
- **1988: Commercial landings quota implemented**
- **1997: Commercial entanglement net ban implemented**
- **2022: To be determined**



Spawning Stock Size



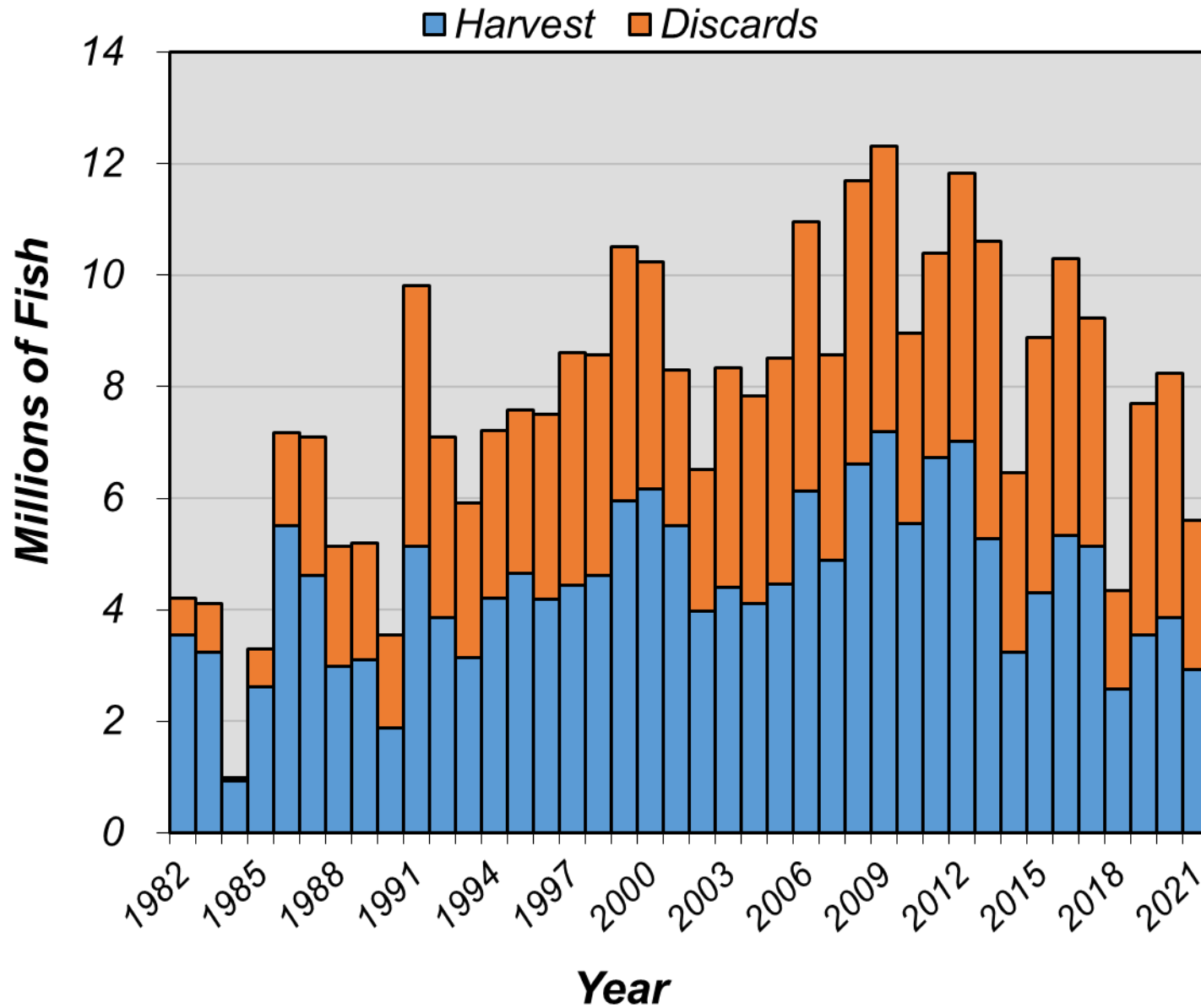
Landings (yield)



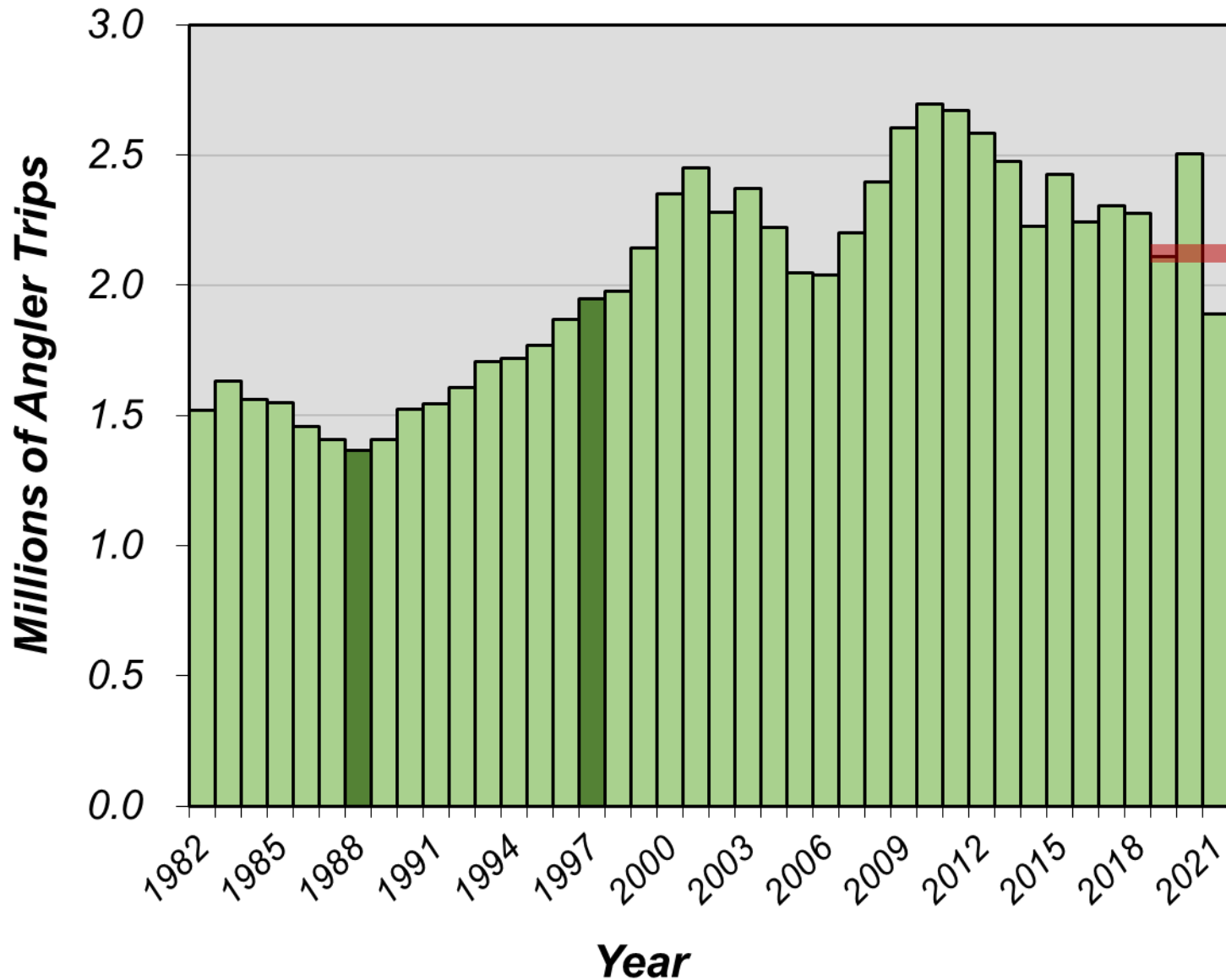
Fishery Trends



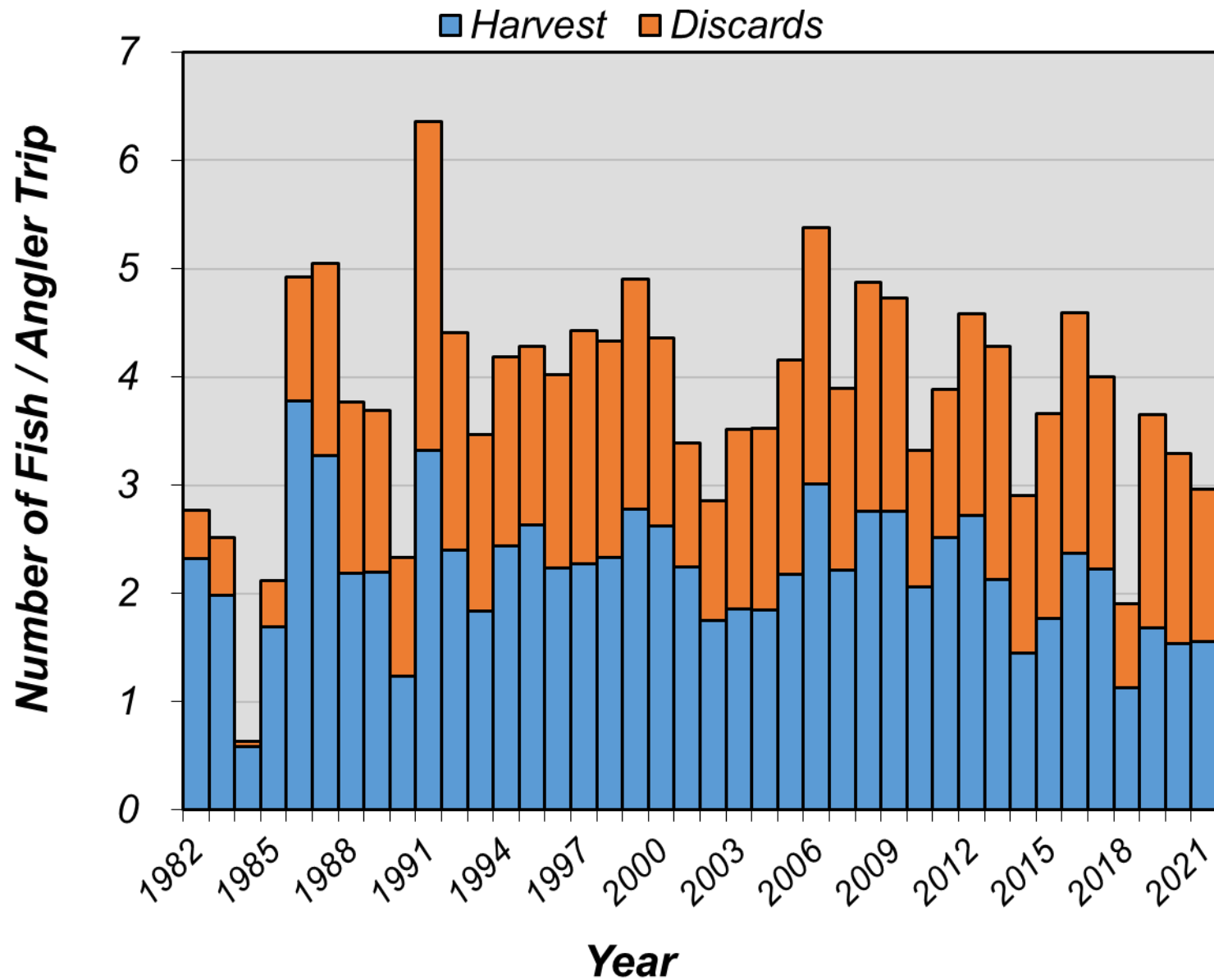
Recreational Catch



Recreational Effort

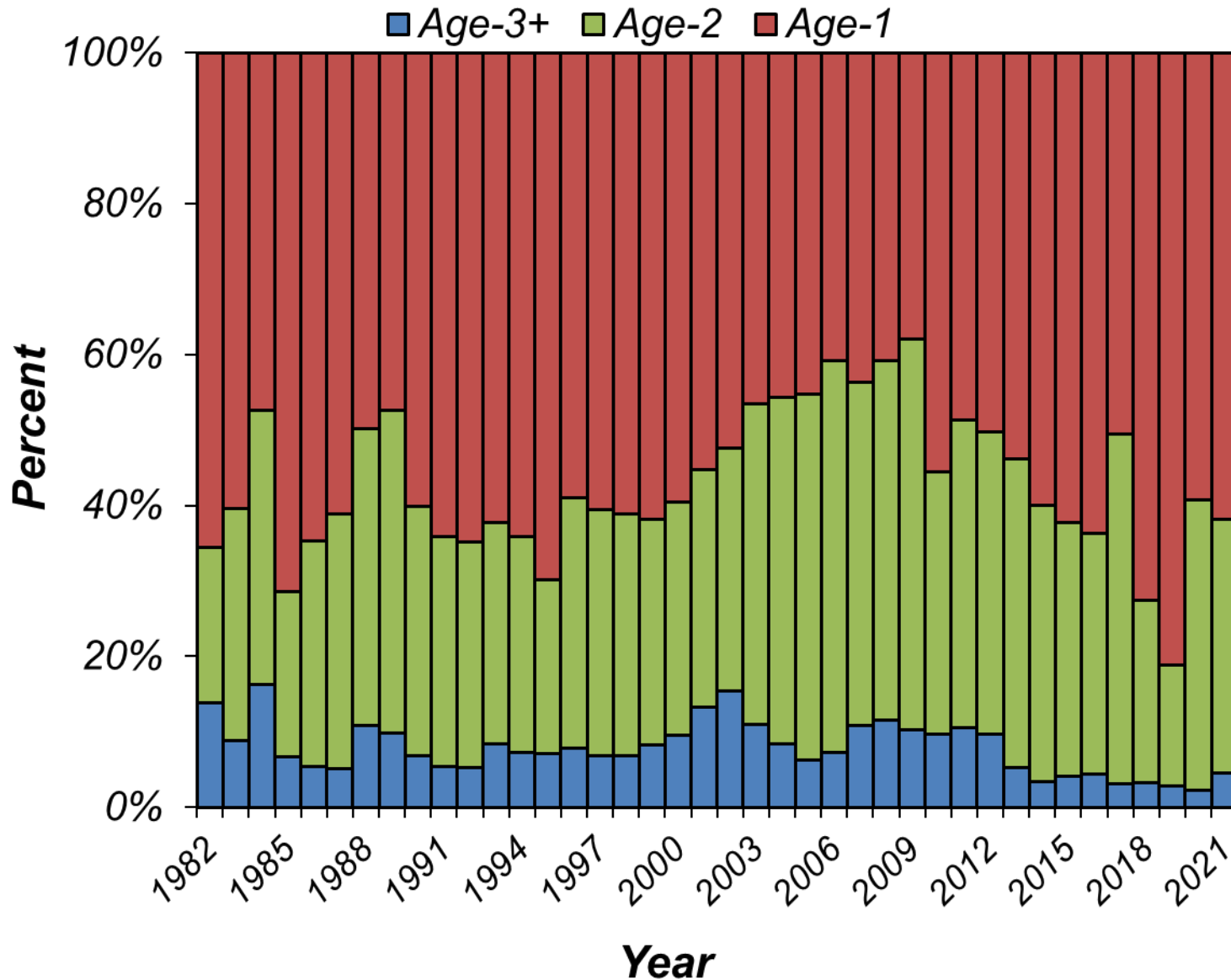


Recreational CPUE



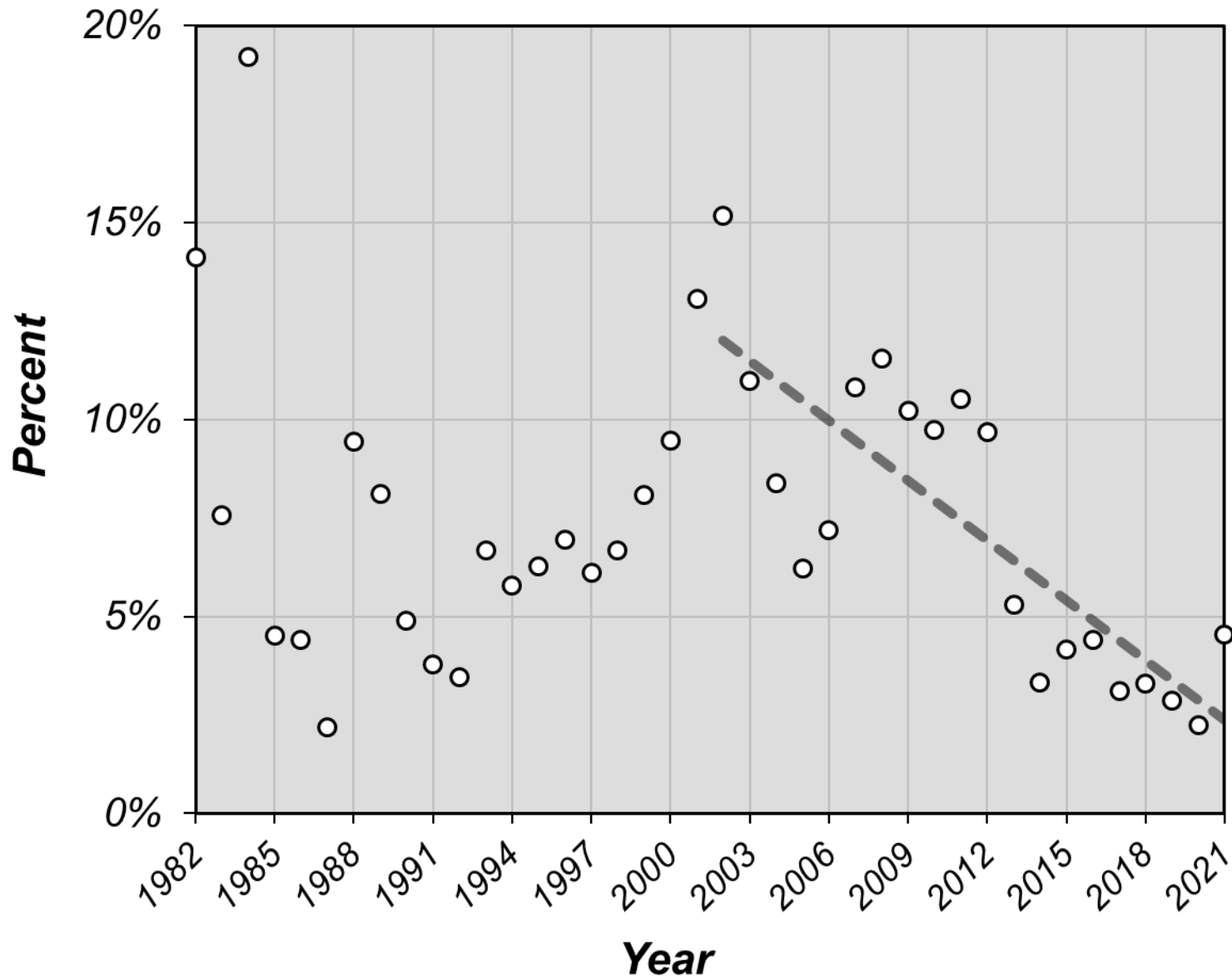
Female Landings Age Composition

Harvest + Dead Discards



Female Landings Age-3+ Composition

Harvest + Dead Discards

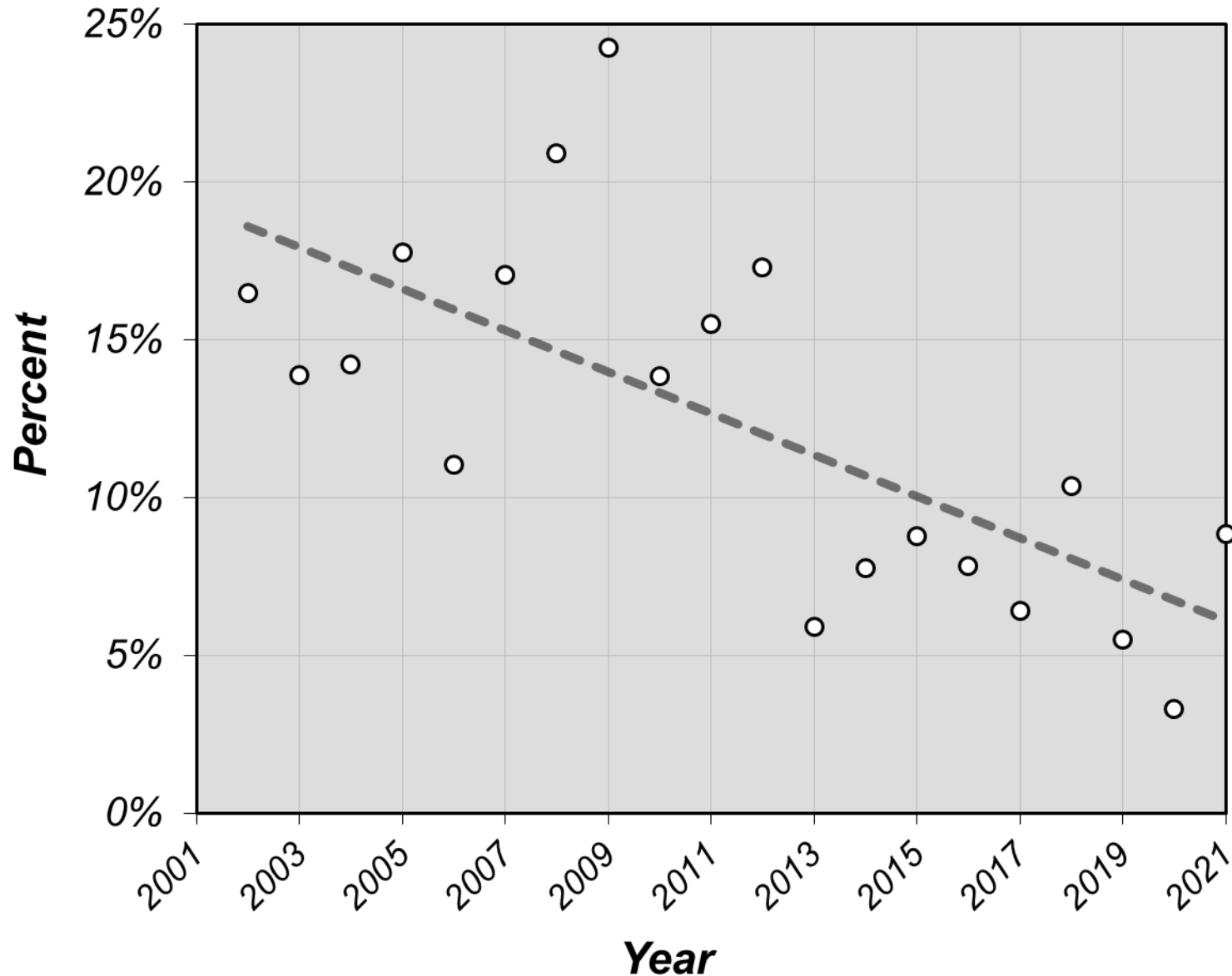


Fishery Trends by Salinity



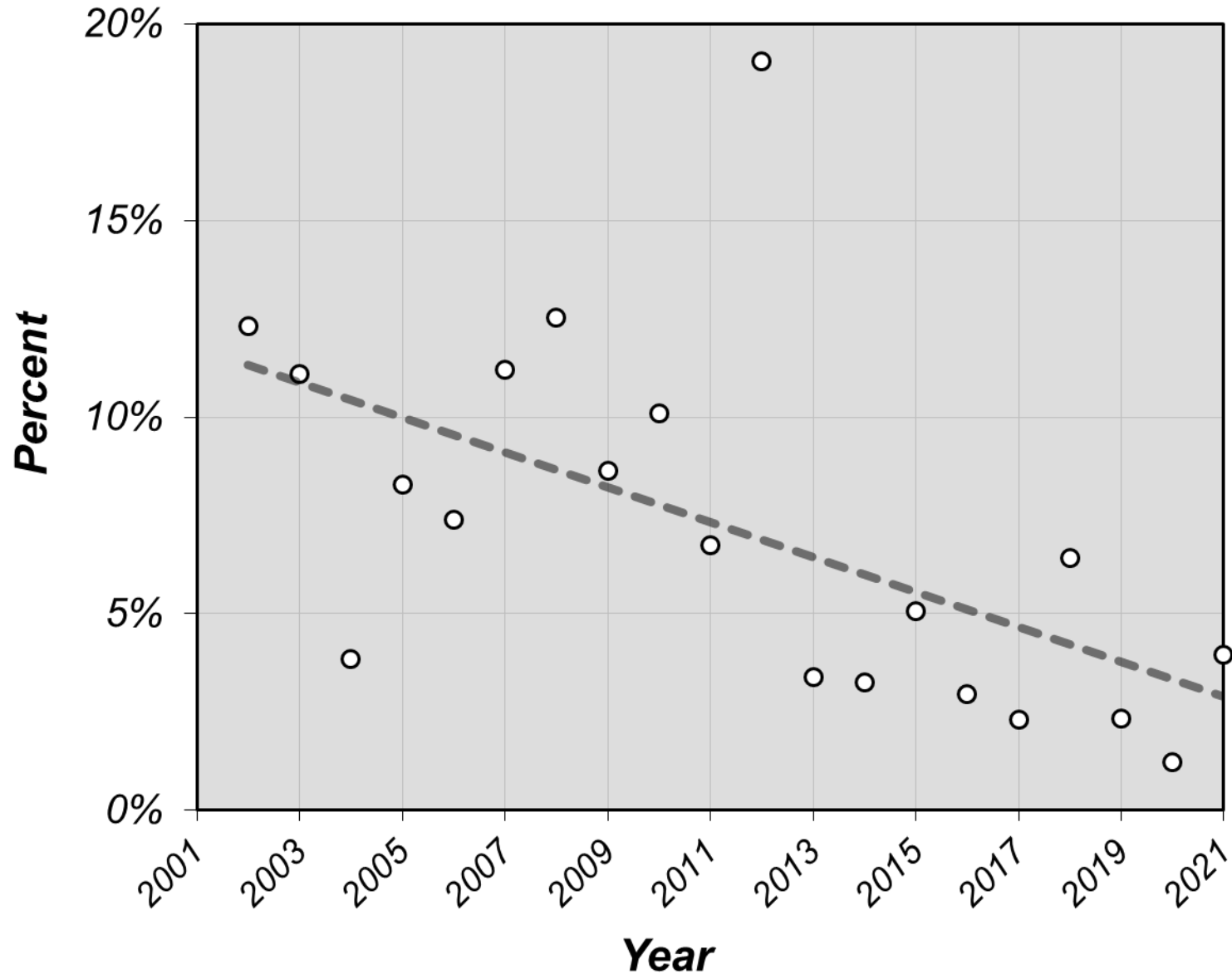
Female Landings Age-3+ Composition

Harvest only (Access Sites ≥ 15 ppt)



Female Landings Age-3+ Composition

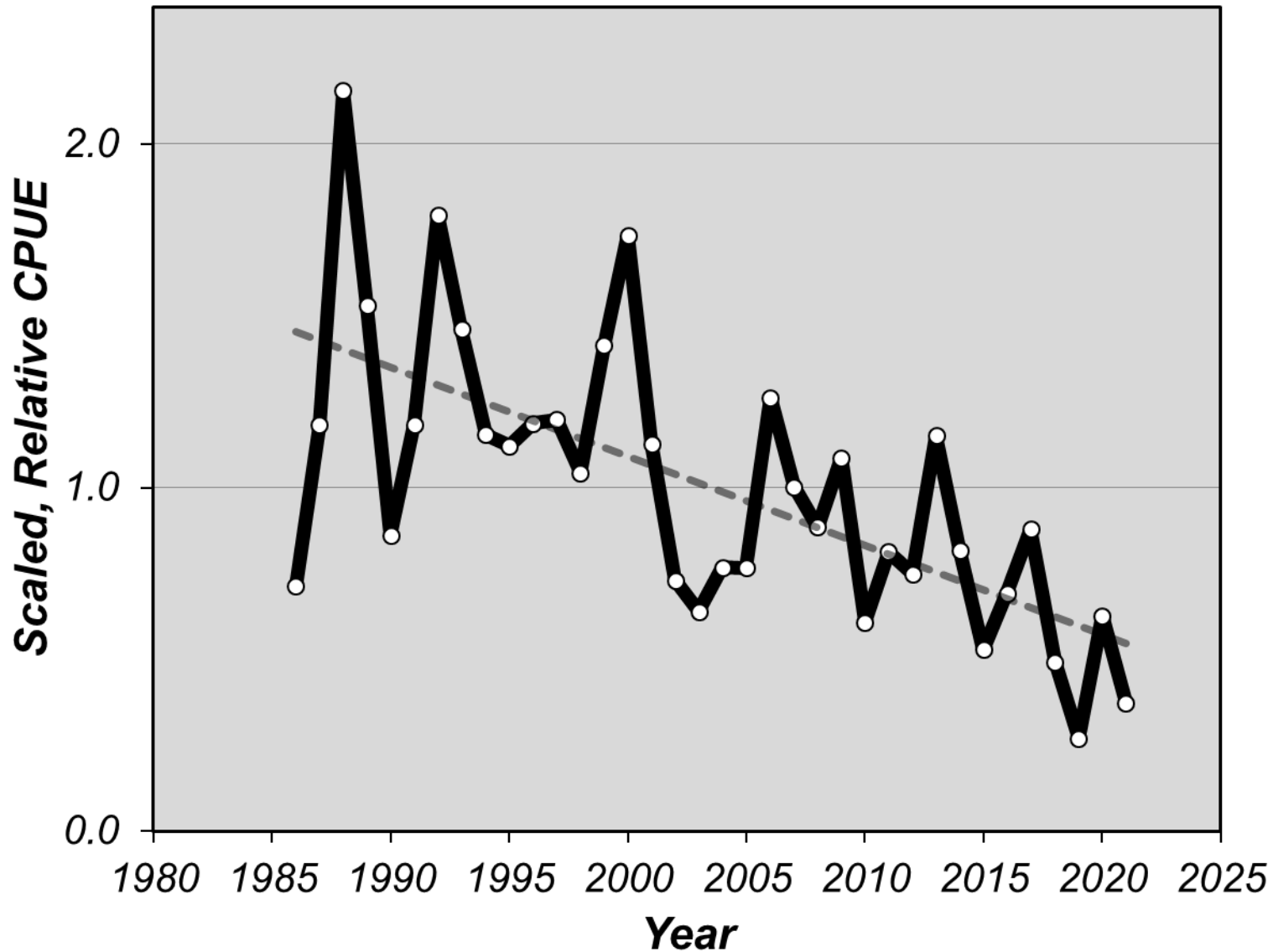
Harvest only (Access Sites <15 ppt)



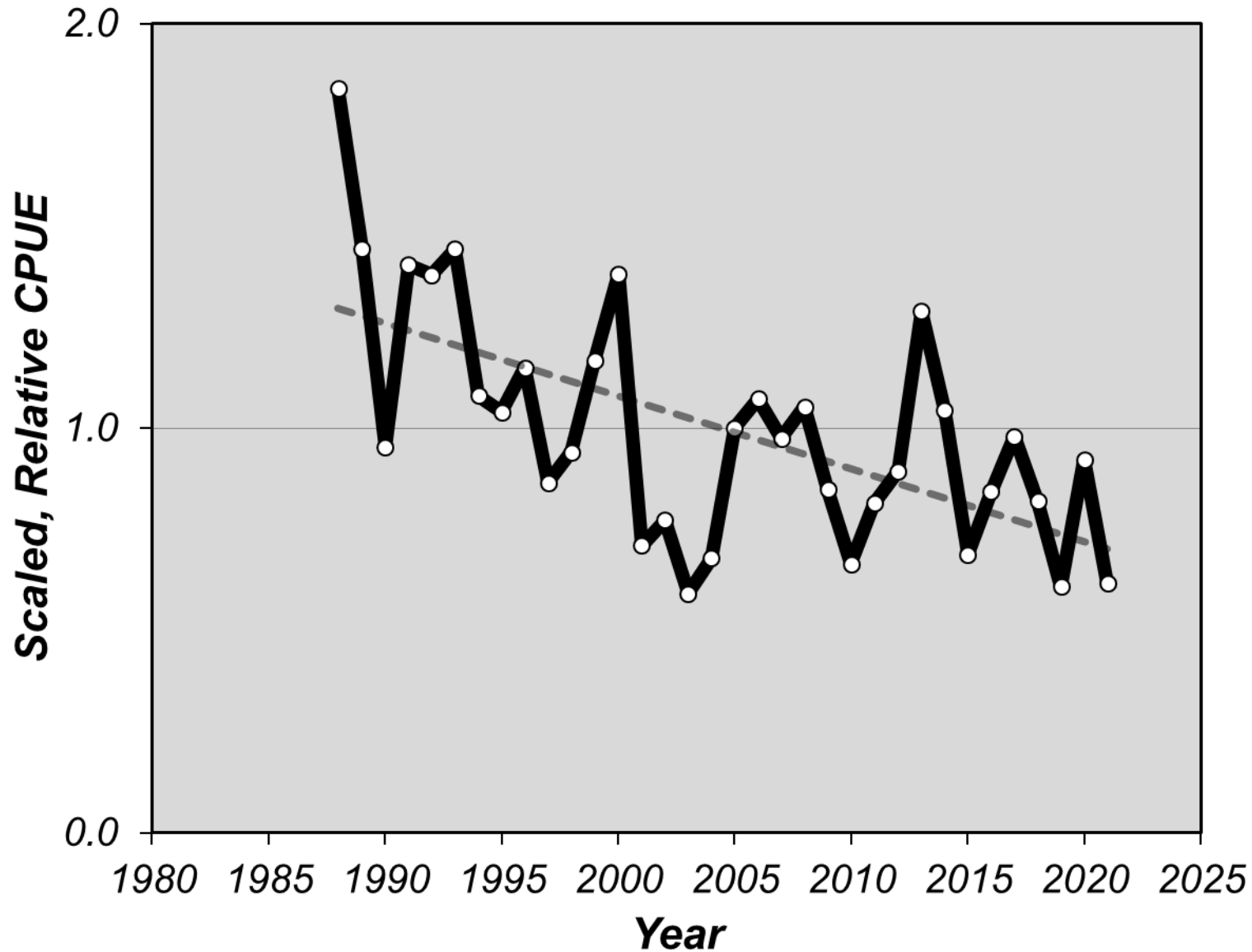
Gillnet Survey Trends



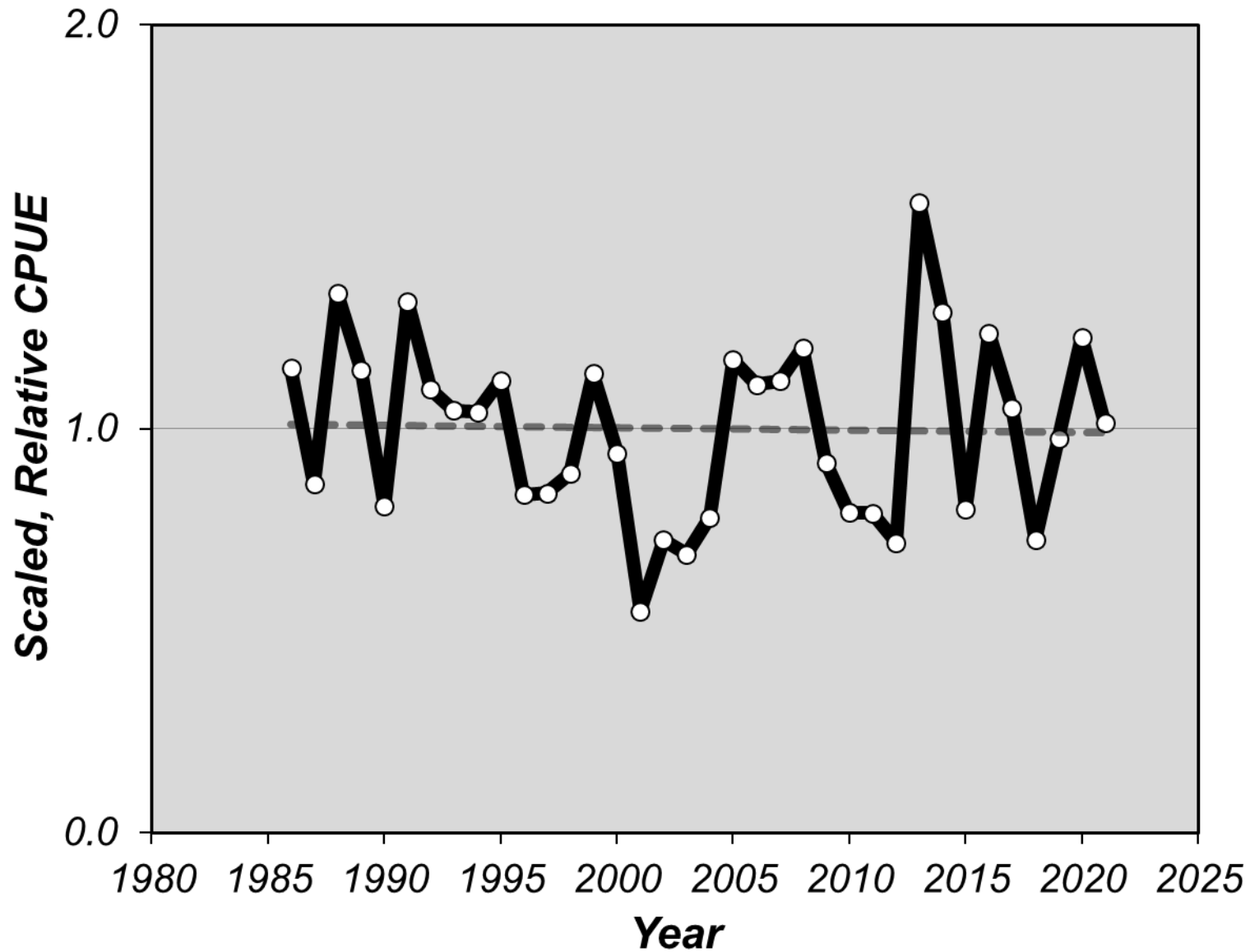
1.5-inch Mesh Size



1.25-inch Mesh Size



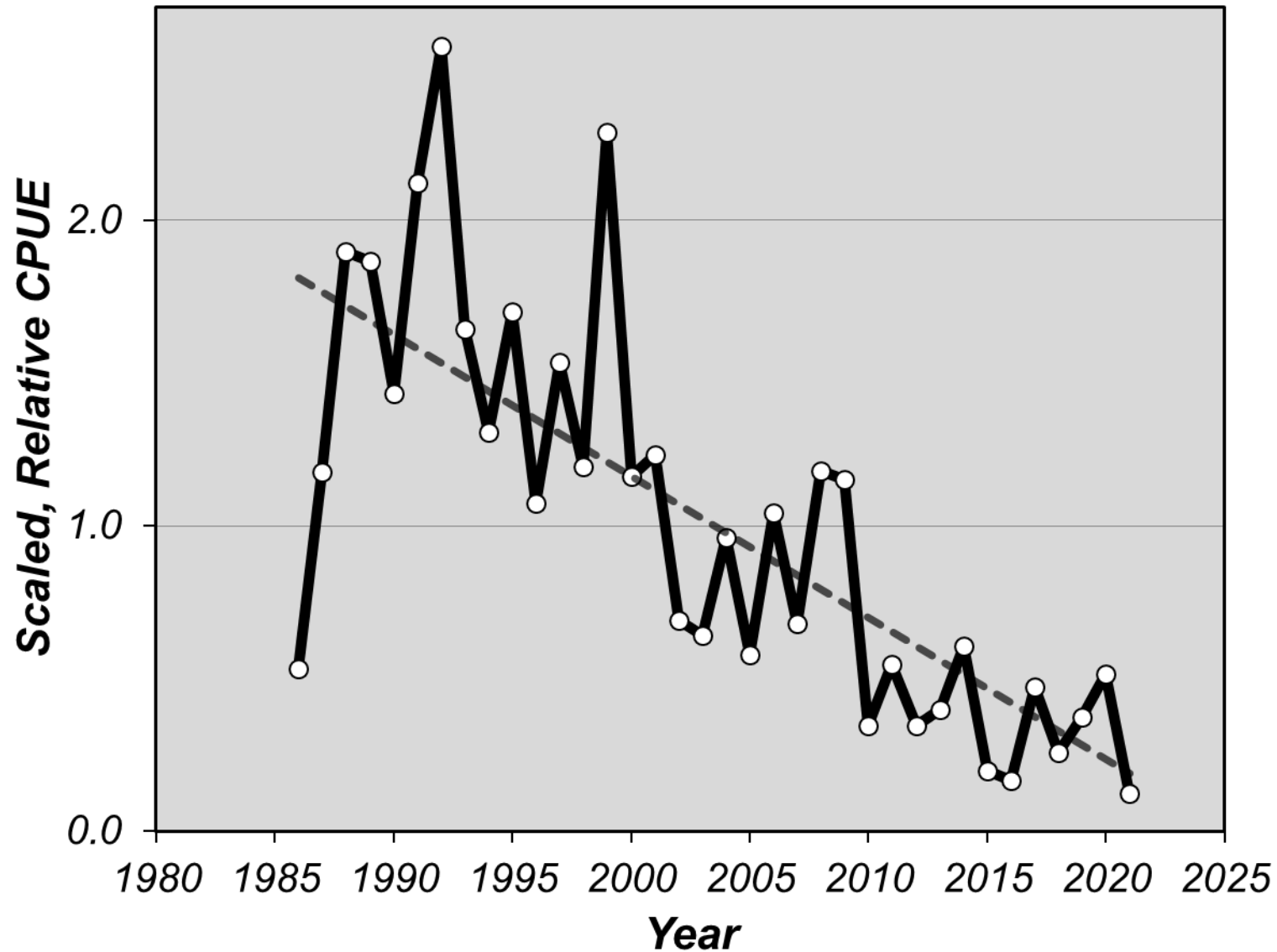
1.0-inch Mesh Size



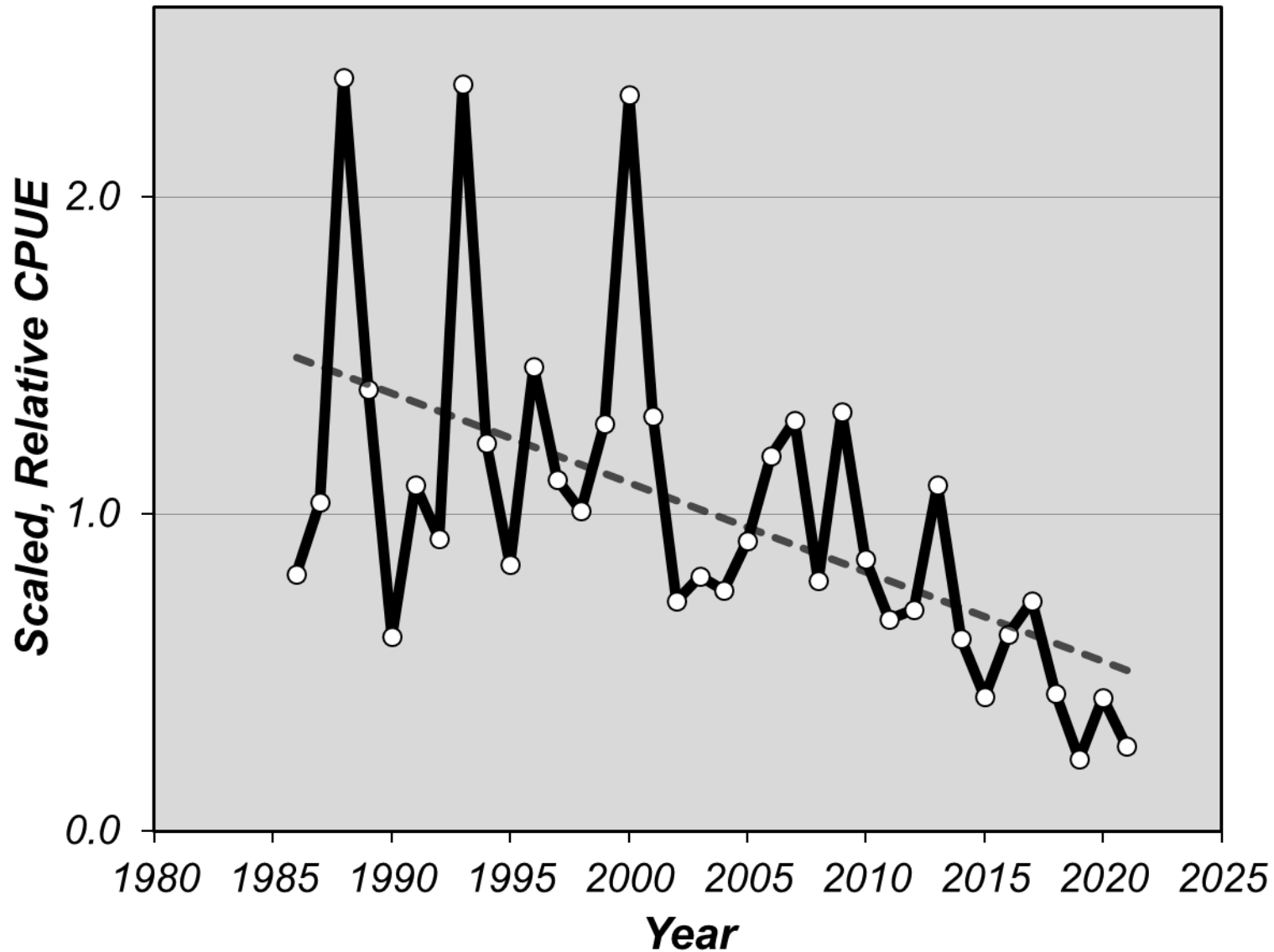
Gillnet Survey Trends by Salinity



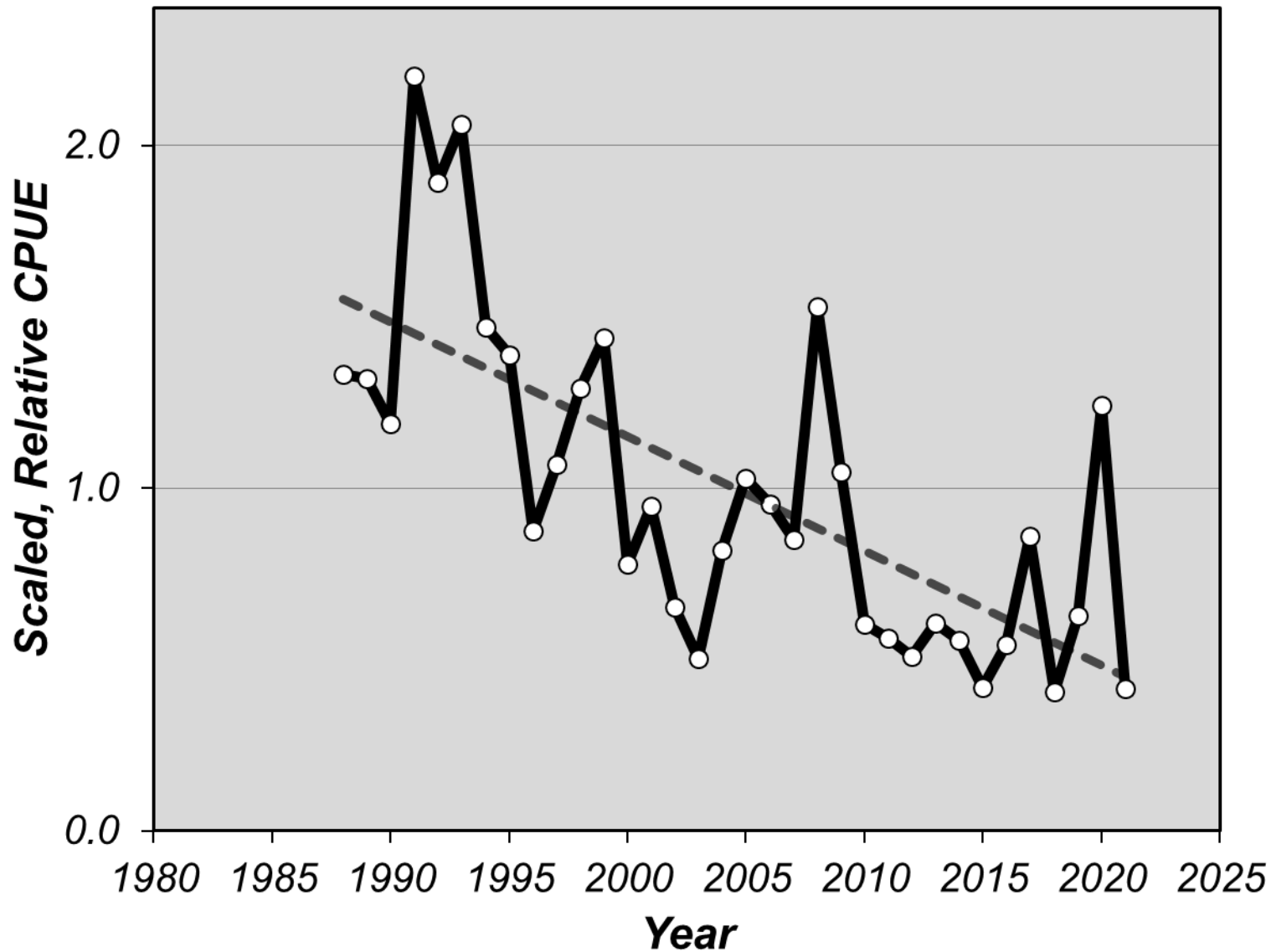
1.5-inch mesh size (samples ≥ 15 ppt)



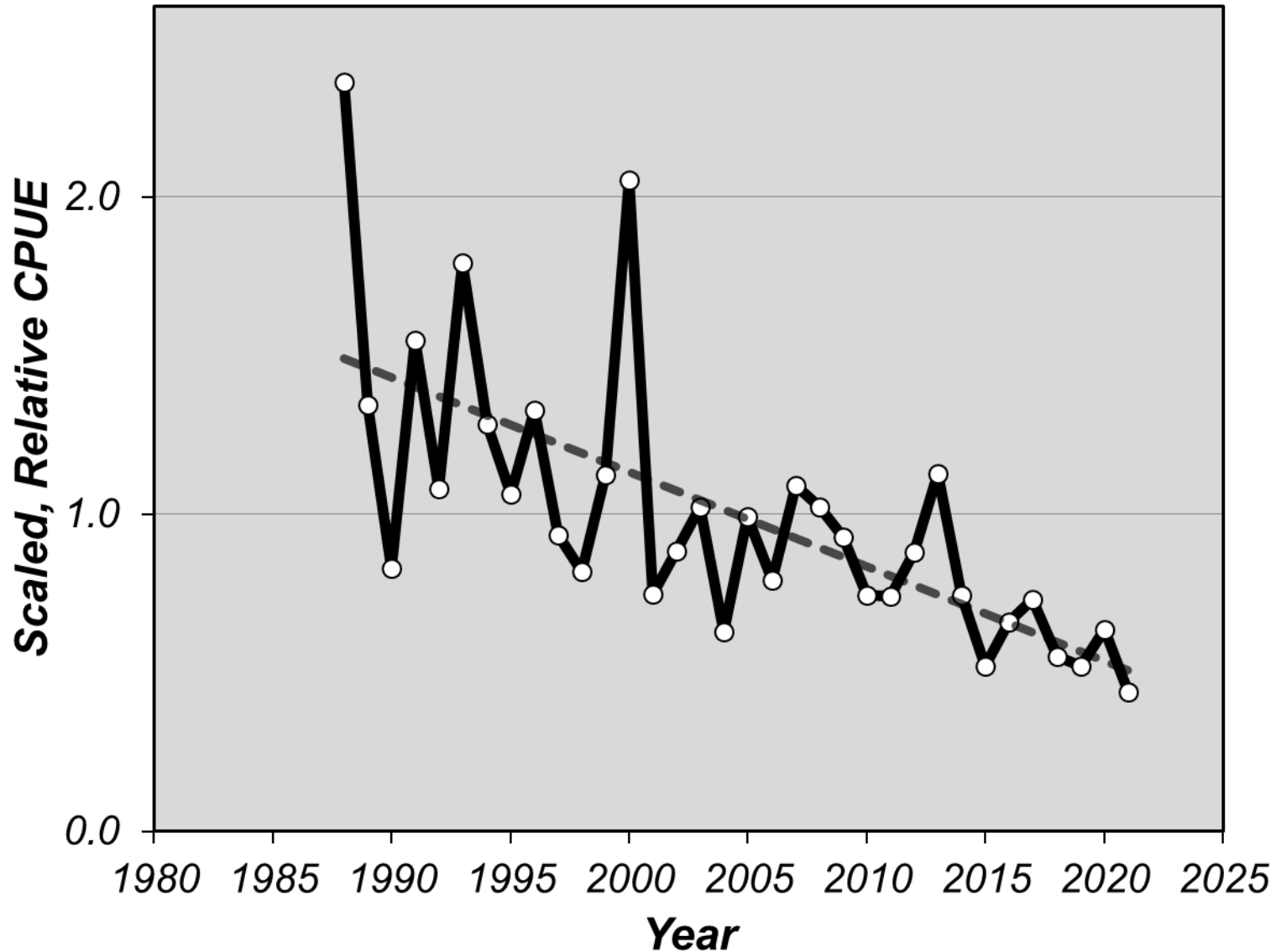
1.5-inch mesh size (samples <15ppt)



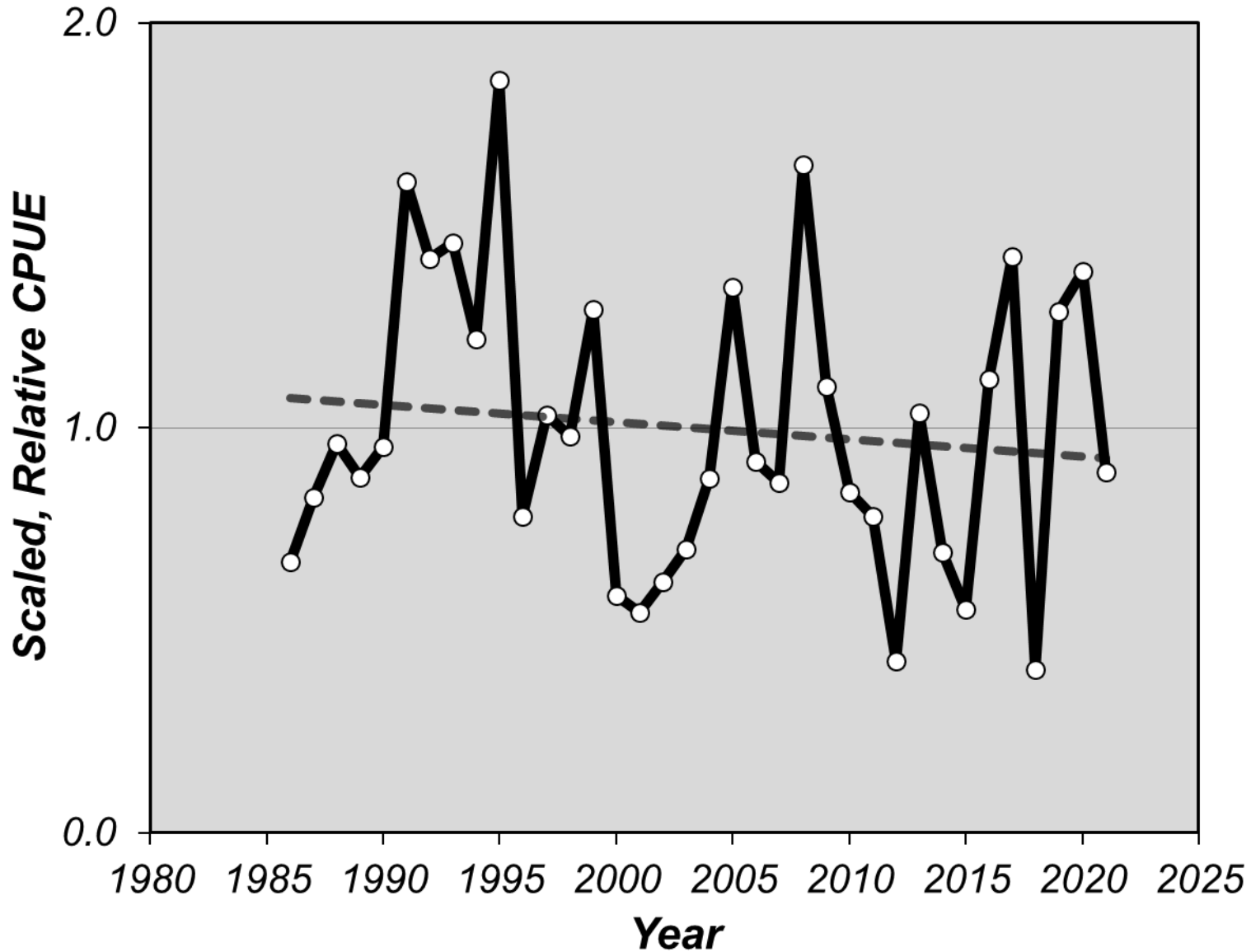
1.25-inch mesh size (samples ≥ 15 ppt)



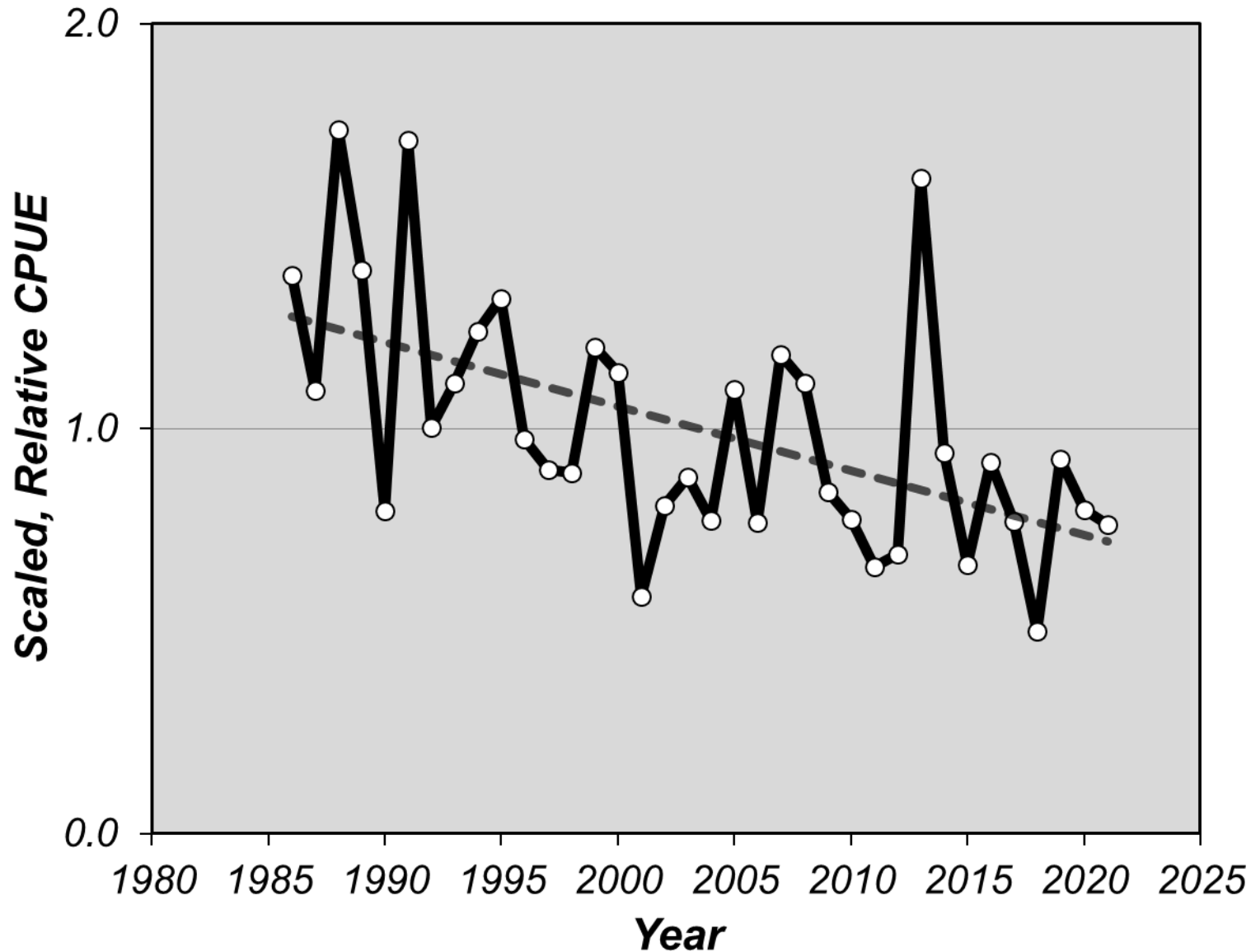
1.25-inch mesh size (samples <15ppt)



1.0-inch mesh size (samples ≥ 15 ppt)



1.0-inch mesh size (samples <15ppt)

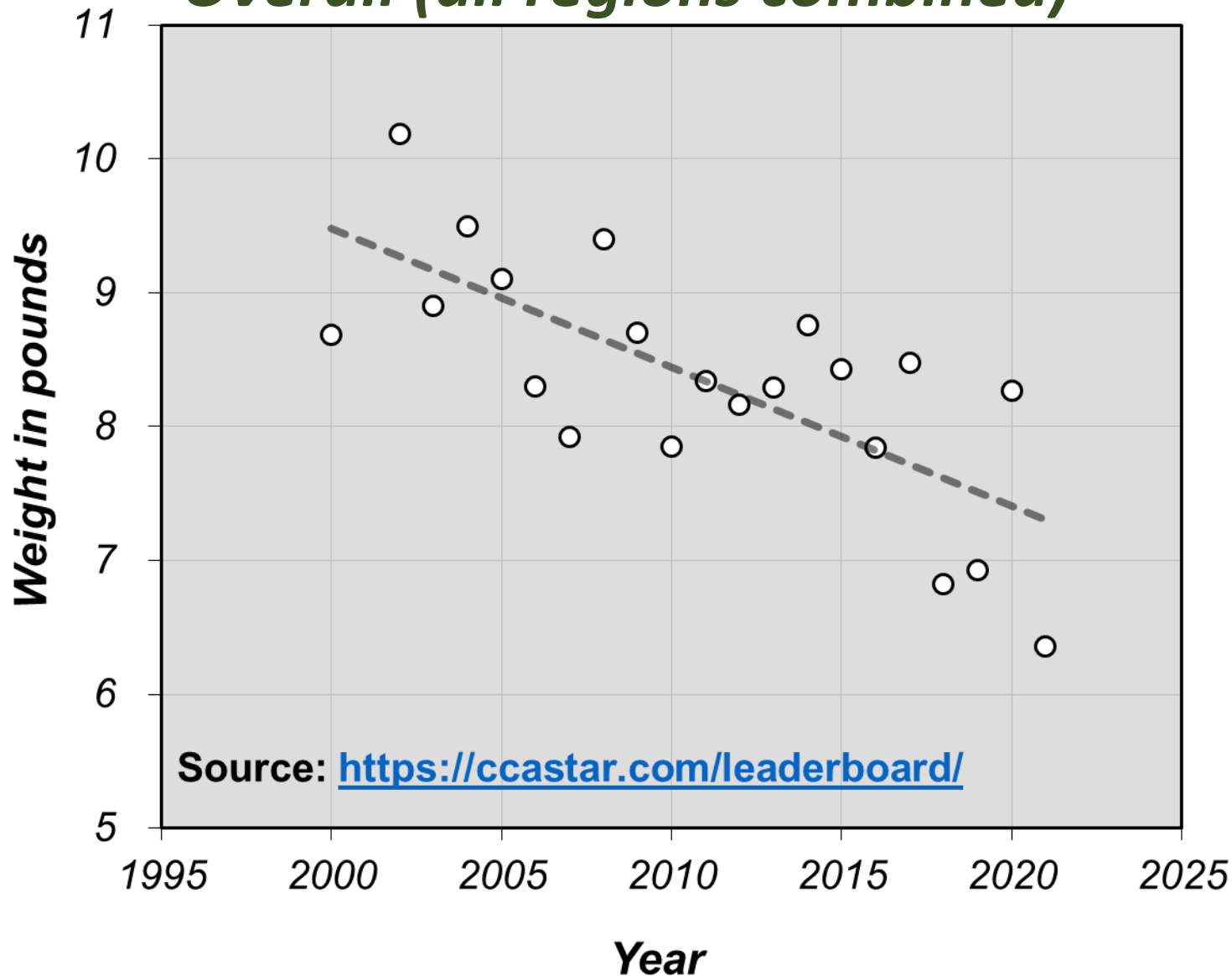


Tournament Trends



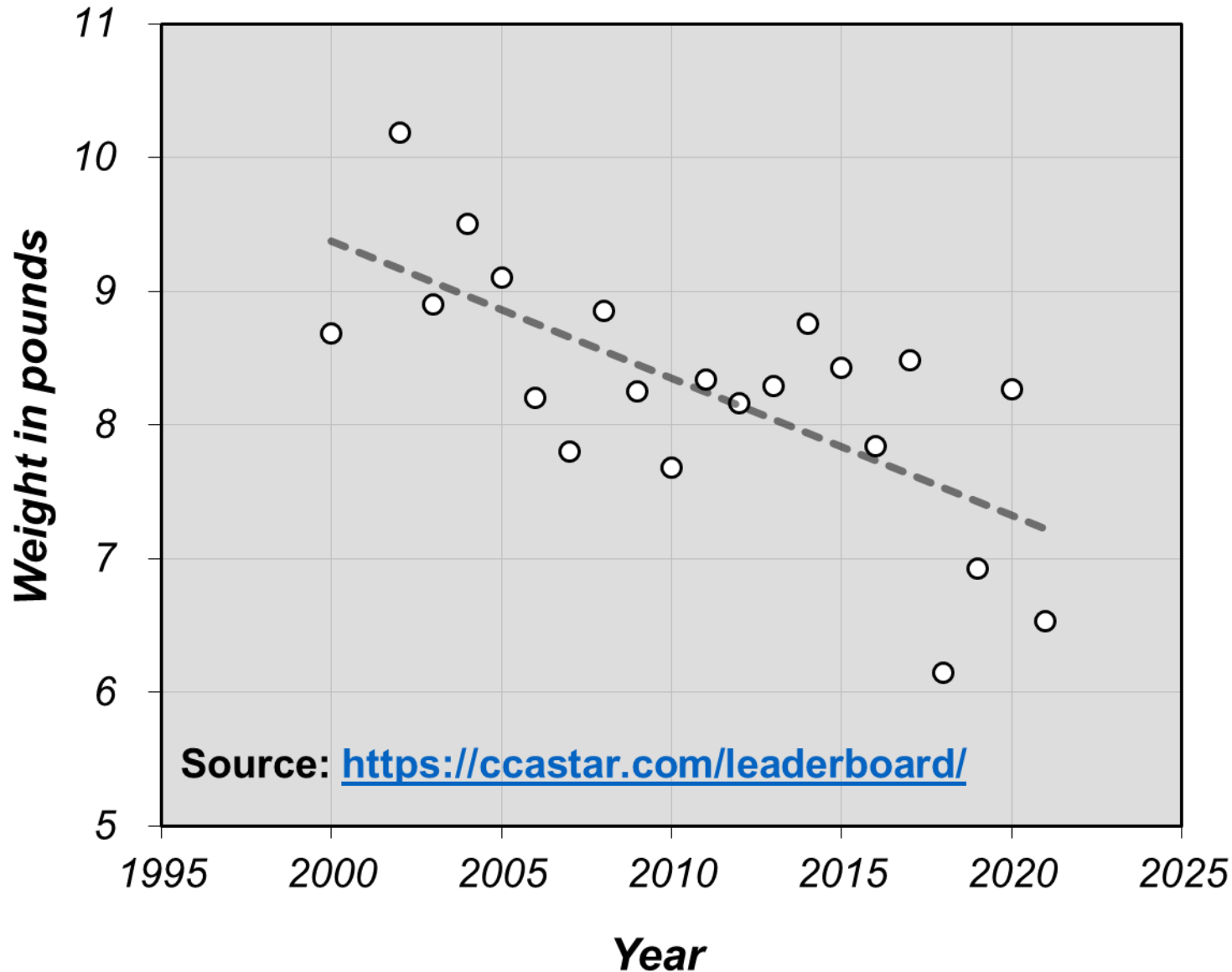
CCA STAR Winners

Overall (all regions combined)



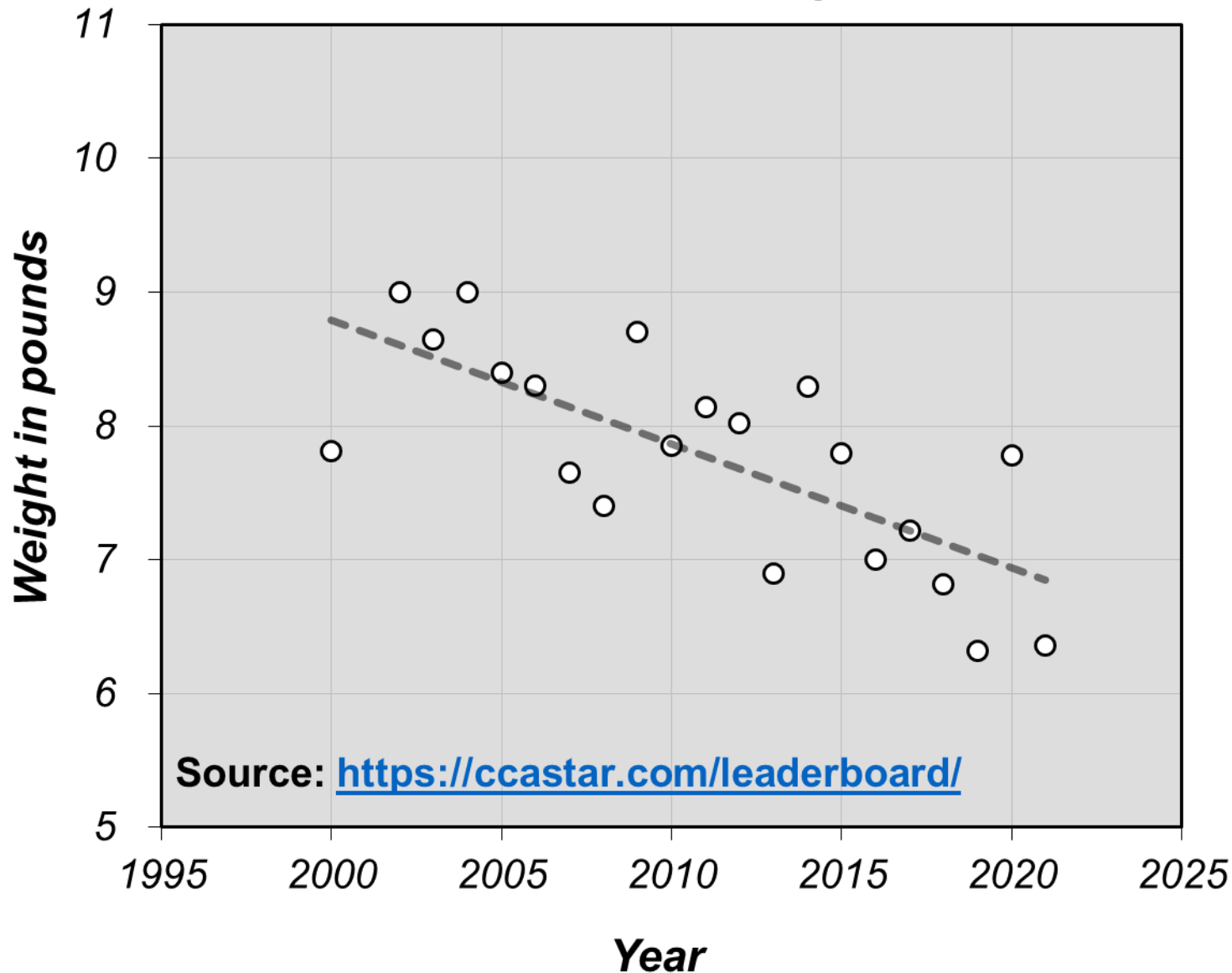
CCA STAR Winners

West (southwest and west regions combined)

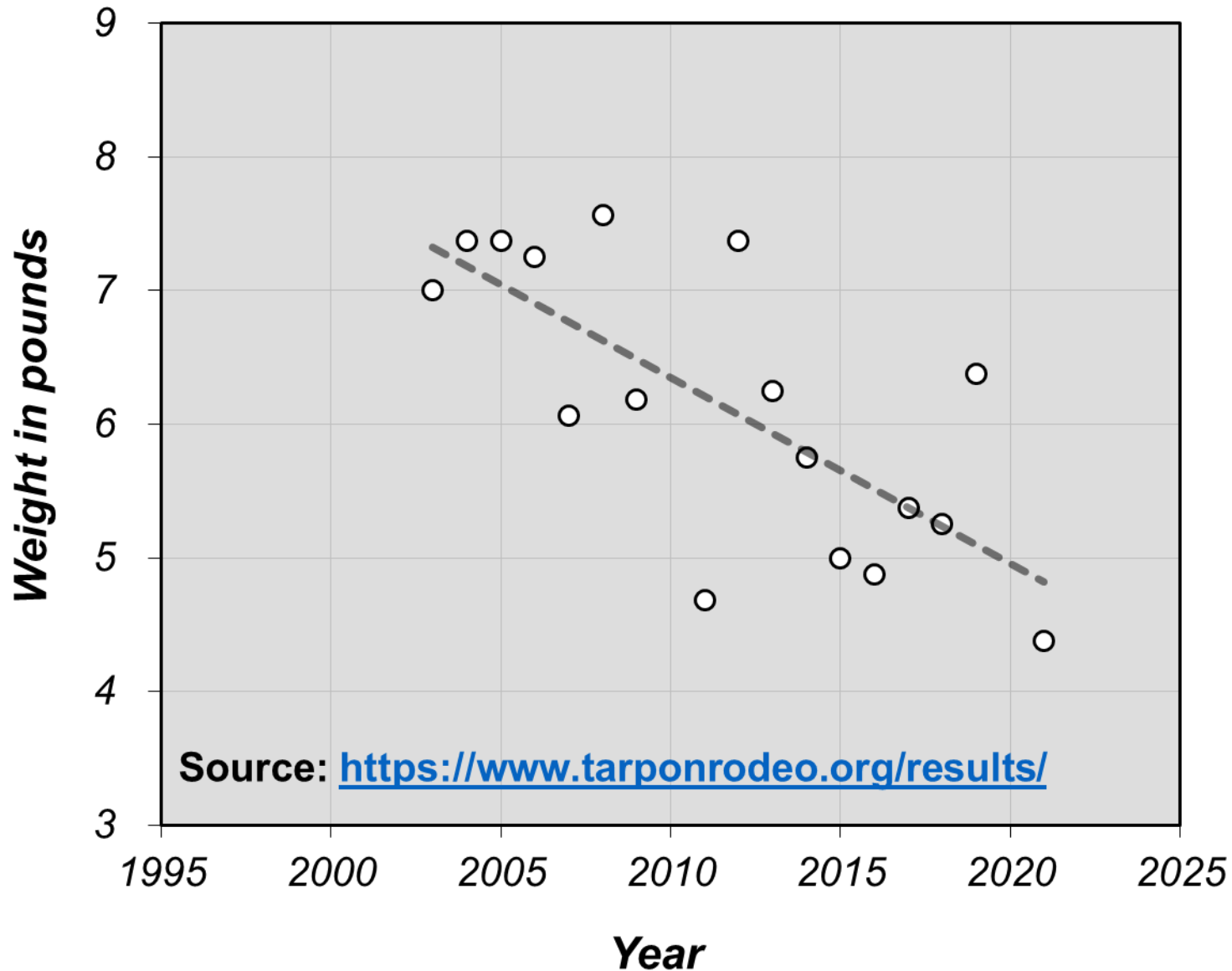


CCA STAR Winners

East (southeast and east regions combined)



Grand Isle Tarpon Rodeo Winners



Questions ?

Jason Adriance
LDWF Biologist DCL-B
504-284-2032
jadriance@wlf.la.gov

