

# **LOUISIANA DEPARTMENT OF WILDLIFE & FISHERIES**



**OFFICE OF FISHERIES  
INLAND FISHERIES SECTION**

**PART VI -A**

**WATERBODY MANAGEMENT PLAN SERIES**

**NEW ORLEANS CITY PARK**

**HISTORY & MANAGEMENT ISSUES**

## **CHRONOLOGY**

March 2009 - Prepared by  
Melissa Kaintz, Biologist Manager, District 8

January 2010 – Updated by  
Melissa Kaintz, Biologist Manager, District 8

January 2014 Updated by  
Tim Ruth, Biologist Manager, District 8

August 2018 Updated by  
Gary Vitrano, Biologist Manager, District 8

August 2022 Updated by  
Gary Vitrano, Biologist Manager, District 8  
Matthew Duplessis, Biologist Supervisor, District 8  
Jonathan Winslow, Biologist III, District 8

# TABLE OF CONTENTS

<b>TABLE OF CONTENTS .....</b>	<b>3</b>
<b>LAKE HISTORY .....</b>	<b>4</b>
<b>GENERAL INFORMATION .....</b>	<b>4</b>
<i>Date Reservoir Formed .....</i>	<i>4</i>
<i>Impoundment .....</i>	<i>4</i>
<i>Size.....</i>	<i>4</i>
<i>Watershed.....</i>	<i>4</i>
<i>Pool Stage.....</i>	<i>4</i>
<i>Drawdown Description.....</i>	<i>5</i>
<i>Structure Control.....</i>	<i>5</i>
<i>Authorization .....</i>	<i>6</i>
<b>ACCESS .....</b>	<b>6</b>
<i>Boat Docks.....</i>	<i>6</i>
<i>Piers.....</i>	<i>6</i>
<i>State/Federal Facilities .....</i>	<i>6</i>
<i>Reefs and Gravel Beds.....</i>	<i>6</i>
<b>SHORELINE DEVELOPMENT.....</b>	<b>8</b>
<i>Shoreline Development by Landowners.....</i>	<i>8</i>
<i>Shoreline Length.....</i>	<i>8</i>
<i>Average Depth.....</i>	<i>8</i>
<i>Maximum Depth .....</i>	<i>9</i>
<i>Natural Seasonal Water Fluctuation .....</i>	<i>9</i>
<b>EVENTS / PROBLEMS .....</b>	<b>9</b>
<i>Water Level.....</i>	<i>9</i>
<i>Aquatic Vegetation .....</i>	<i>9</i>
<b>MANAGEMENT ISSUES .....</b>	<b>10</b>
<b>AQUATIC VEGETATION.....</b>	<b>10</b>
<i>Type Maps and Surveys .....</i>	<i>10</i>
<i>Vegetation Treatment History.....</i>	<i>10</i>
<b>HISTORY OF REGULATIONS .....</b>	<b>11</b>
<i>Recreational.....</i>	<i>11</i>
<i>Commercial .....</i>	<i>12</i>
<b>FISH KILLS / DISEASE HISTORY .....</b>	<b>12</b>
<b>CONTAMINANTS / POLLUTION .....</b>	<b>12</b>
<i>Water Quality .....</i>	<i>12</i>
<b>BIOLOGICAL .....</b>	<b>12</b>
<i>Fish Samples.....</i>	<i>12</i>
<i>Lake Records .....</i>	<i>14</i>
<i>Stocking History .....</i>	<i>15</i>
<i>Species Profile .....</i>	<i>16</i>
<i>Genetics .....</i>	<i>16</i>
<i>Threatened/Endangered/Exotic Species .....</i>	<i>16</i>
<b>CREEL SURVEYS.....</b>	<b>17</b>
<i>Historic Information .....</i>	<i>17</i>
<b>HYDROLOGICAL CHANGES .....</b>	<b>17</b>
<b>WATER USE .....</b>	<b>18</b>
<i>Hunting.....</i>	<i>18</i>
<i>Swimming .....</i>	<i>19</i>
<b>REFERENCES .....</b>	<b>19</b>

# LAKE HISTORY

## GENERAL INFORMATION

### Date Reservoir Formed

The southernmost lagoon is a remnant of historical Bayou Metairie, and was enlarged and dredged around 1900 (Figure 1). Big Lake was dug shortly after as a borrow pit during the construction of the New Orleans Museum of Art (Figure 1). The remaining lagoons were dug during the 1930s under the Works Progress Administration (Mark Schexnayder, personal communication, March 18, 2009). More than \$12 million federal dollars were spent and more than 20,000 men and women were employed through the Works Progress Administration building bridges, roadways, fountains, a garden, and a stadium, and digging over 10 miles of lagoons – work all done by hand (New Orleans City Park Improvement Association, 2005-2009).

### Impoundment

Owners – City of New Orleans

Purposes for creation – Provide recreational outdoor activities such as fishing and boating in an urban environment.

### Size

The lagoons are interconnected throughout the 1300-acre park. The lagoons are divided into two separate systems, the northern lagoons and the southern lagoons. The northern and southern lagoons are located north and south of I-610, respectively (Figure 1). The southern lagoon system is further divided into the upper and lower lagoons separated by a weir dam (Burt-Kleinpeter, Inc. 1996). There are approximately 114 acres of water throughout the park, 87 acres in the northern end and 27 acres in the southern end (surface area calculated using SONRIS provided by the Louisiana Department of Natural Resources (LDNR)).

### Watershed

In addition to rain and runoff from the 1,300-acre park and surrounding urban environment, there are five water sources that maintain the water level in the 113-acre lagoon system. There are currently two functioning sources of well water, a functioning 99 GPM pump, a non-functioning 3,000 GPM pump, and a functioning 16-inch gravity culvert that provides water from Bayou St. John. The gravity culvert is the only source of water for the northern lagoon system. Prior to Hurricane Katrina, the 3,000 GPM pump pulled water into Big Lake. Currently, the 99 GPM pump and both wells pull water into Bayou Metairie (Figure 1).

### Pool Stage

Elevations vary throughout the lagoon system. The northern lagoon system has an elevation of approximately -4.8 feet MSL; the upper southern lagoon system has an elevation of approximately -0.3 feet MSL; and the lower southern lagoon system has an elevation of approximately -3.4 feet MSL (Burt-Kleinpeter, Inc. 1996).

There are four outlet weirs and one weir dam in the system. Two of the weir drains are located in the northern lagoon system. The first is near the corner of Robert E. Lee Boulevard and Marconi Boulevard. This is an 18-inch overflow outlet that flows into the city drainage system.

The other is located off of Zachary Taylor Drive in the middle of the park. It consists of a free flowing weir that drains into a 65 inch by 40-inch culvert. The culvert then drains into the Orleans Outfall Canal. There is another structure directly south of I-610 that drains the southern lagoon system. This is a free-flowing 24-inch culvert that flows into the Orleans Outfall Canal during periods of high water. Further south there is a weir dam that separates the upper and lower sections of the southern lagoons. The final drainage structure is located at the corner of Marconi Boulevard and City Park Avenue. This is a weir structure that houses a 12-inch butterfly valve. It is a controllable structure that flows into a 24-inch culvert that drains into the Orleans Outfall Canal (Figure 1).

Drawdown Description

There is no control structure capable of draining the entire lagoon system. However, the drain located at the end of Bayou Metairie at the corner of City Park Avenue and Marconi Boulevard can be used to drain the southern lagoon system above the spillway.

Spillway

- Gate size – N/A
- Number of gates – 1
- Condition – Good
- Flow rate – Dependent on overflow from southern lagoon system

Structure Control

The City Park Improvement Association, a state agency under the Louisiana Department of Culture, Recreation, and Tourism

Members – 2022	
Lambright Cara Chief Executive Officer 483-9367 clambright@nocp.org	New Orleans City Park 1 Palm Drive New Orleans, LA 70124 (504) 482-4888 email: <a href="mailto:info@nocp.org">info@nocp.org</a>
Henry Yvette Human Resources Director 483-9388 yhenry@nocp.org	
Duplechain Casie Chief Development Officer 483-9360 CDuplechain@nocp.org	
Hemel Keith Chief Financial Officer 483-9492 khemel@nocp.org	
Dietz Rebecca Chief Administrative Officer 504-483-9361 rdietz@nocp.org	
Maitre Chris Chief Operations Officer 483-9419 cmaitre@nocp.org	

### Authorization

The New Orleans City Park Board of Commissioners (Charter, New Orleans City Park, no date)

## **ACCESS**

### Boat Docks

No boat docks are located in City Park. Motorized watercrafts are prohibited in the lagoon system. The prohibition is enforced by the New Orleans City Park Police. No personal canoes or kayaks are allowed in the lagoon system. All non-motorized watercrafts must be rented from the park or associated organizations. Please see the following code of ordinance for the City of New Orleans under Article I. In General, (Municode, updated January 22, 2009):

Sec. 106-3. Use of private watercraft prohibited in City Park.

It shall be unlawful for any person to use or operate a privately owned watercraft within the boundaries of City Park, without first having applied for and obtained a permit from the general manager of New Orleans City Park Improvement Association.

(Code 1956, § 42-115)

### Piers

A fishing pier and parking lot were constructed on Marconi Boulevard between Harrison Ave and Filmore Ave (Figure 1). A fishing pier and recreations rental facility was also built on Big Lake.

### State/Federal Facilities

The City Park Improvement Association is part of the Louisiana Department of Culture, Recreation, and Tourism.

### Reefs and Gravel Beds

In January 2011, Christmas tree reefs were placed in the lagoon along Marconi Boulevard between Harrison Ave and Filmore Ave (Figure 1). In February 2018, additional Christmas tree reefs were placed in various locations in the northern lagoons, (Figure 2). In a separate project, artificial reefs constructed from cement blocks and natural gas PVC tubing were placed throughout the lagoon system (Figure 2).

In conjunction with the City Park Children's Museum construction, fifty tons of pea gravel were used to create spawning beds around Little Lake.

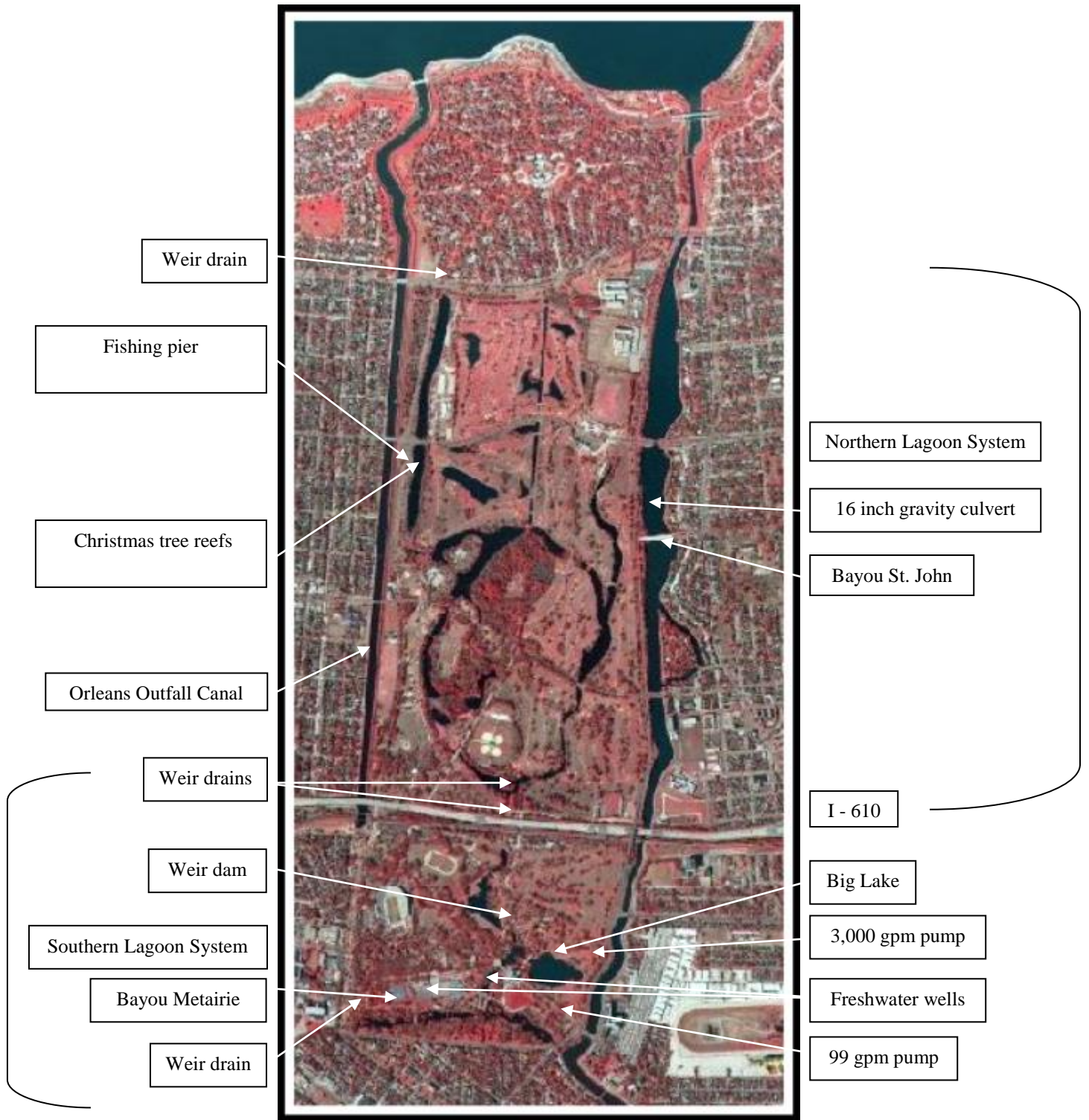


Figure 1. Map of New Orleans City Park. Aerial photography courtesy of Louisiana Department of Natural Resources (SONRIS).

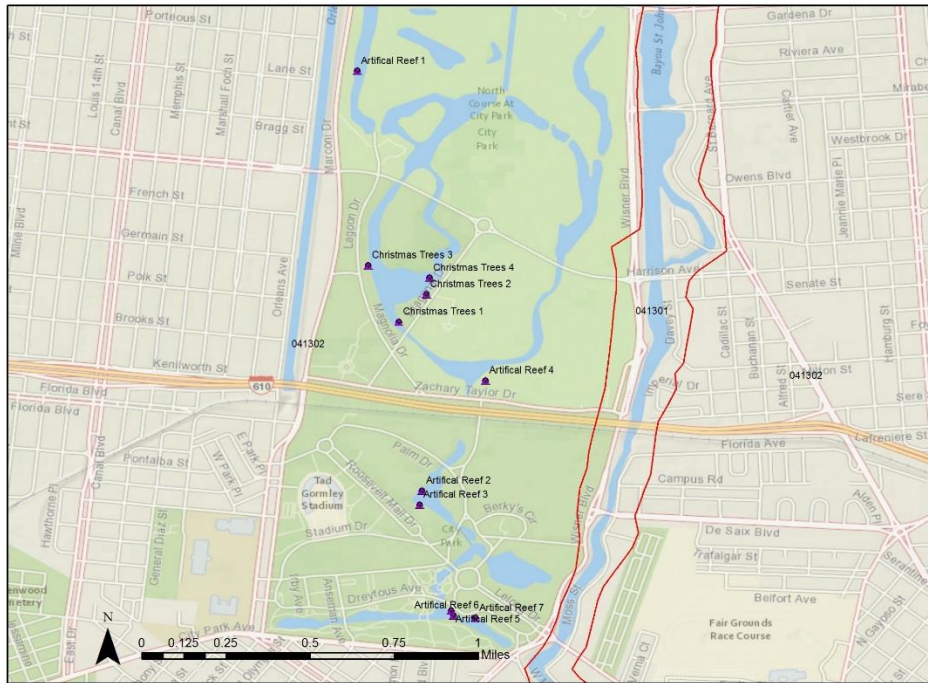


Figure 2. Map of artificial reef placement in the New Orleans City Park Lagoon System (2018).

## SHORELINE DEVELOPMENT

### Shoreline Development by Landowners

The lagoon system is located in a park surrounded by urban development. There are also several buildings located in close proximity to the lagoon system within the park such as, The New Orleans Museum of Art, the Casino Building, the fishing education center, Tad Gormley Stadium, the golf course club house, the Peristyle, Storyland, the Sculpture Garden, The New Orleans Botanical Gardens, and several maintenance and police buildings (Figure 2). Two separate construction projects commenced in 2017, The City Park Children’s Museum and The New Orleans Museum of Art Sydney and Walda Besthoff Sculpture Garden /Phase II. These two projects will alter the shoreline of Little Lake and the lagoon north of Big Lake (Figure 2).

## PHYSICAL DESCRIPTION

### Shoreline Length

There are 15 miles of shoreline throughout the 1,300-acre park. The lagoons are divided into two separate systems, the northern lagoons (11 miles) and the southern lagoons (4 miles; shoreline calculated using SONRIS provided by LDNR).

### Average Depth

The average depth of the lagoon system is 3 feet.

### Maximum Depth

The maximum depth of the lagoon system is 8 feet.

### Natural Seasonal Water Fluctuation

The water levels in the lagoon system can fluctuate anywhere from 2 to 3 feet above or below pool stage during times of heavy rain and drought.

## **EVENTS / PROBLEMS**

### Water Level

- The entire park and surrounding area was inundated after Hurricane Katrina in 2005 for approximately 3 weeks.
- The lagoon system lacks an adequate fresh water supply.
- In recent years, siltation has led to shallow water conditions in many areas of the lagoon system, thus making nuisance aquatic vegetation control difficult.

### Aquatic Vegetation

Water hyacinth has historically been an intermittent nuisance issue. The New Orleans Mosquito and Termite Control Board (NOMTRCB) actively manages mosquitos and other pests within the park. Board employees have also been managing water hyacinth. In 2015, water hyacinth became an issue and was treated by both The City Park Improvement Association and LDWF. Control efforts continue, and in 2017, a private applicator was hired by the park to manage this nuisance plant, but efforts are limited by water levels in certain areas of the lagoon system.

Coontail was the most abundant species in the system prior to 2016. Coverage ranged from a light to moderate fringe in most areas. However, a heavy, solid mat existed in the lagoon south of the Marconi Drive / Filmore Avenue intersection and also in the southern lagoons. Coontail also became a nuisance issue in Bayou Metairie in 2015, but after chemical and biological control efforts by LDWF the population was controlled until 2021. During the spring of 2021, the Coontail population began to expand again. As of June 2022, the coverage is now significant, once again, in Bayou Metairie.

Duckweeds (*Lemna* spp., *Spirodela* spp.) have the potential to periodically pose a nuisance issue throughout the system.

### Annual Fishing Rodeo

New Orleans City Park hosts an annual bass rodeo that dates back to 1946 and is considered the country's oldest freshwater fishing tournament (New Orleans City Park Improvement Association,).

### Recovery and Improvement Projects

Descriptions of projected improvements for New Orleans City Park are available on the New Orleans City Park website (New Orleans City Park Improvement Association, 2005-2009). <http://www.neworleanscitypark.com>

## MANAGEMENT ISSUES

### AQUATIC VEGETATION

The balance between the intrinsic values of the lagoon system (general aesthetics, recreation, productive fishery) is important when considering nuisance aquatic vegetation control. Aquatic vegetation equates to habitat, an important element within the aquatic ecosystem. Control efforts will account for general aesthetics, complex cover, aquatic habitat, and water quality.

#### Type Maps and Surveys

A survey of aquatic plant species composition and infestation was conducted by the Louisiana Department of Wildlife and Fisheries during the summer of 1984. The following observations were made:

- *Ceratophyllum demersum* (coontail) was the most abundant species in the system. Coverage ranged from light to moderate fringe in most areas to heavy solid mat in the lagoon south of the intersection of Marconi Drive and Filmore Avenue.
- *Myriophyllum spicatum* (Eurasian watermilfoil) was the most dominant species in the heavily infested lagoon immediately north of Filmore Avenue along Marconi.
- Other aquatic plant species included *Pistia stratiotes* (water lettuce), *Lemna* spp. (duckweed), and *Spirodela* spp. (duckweed).

The aquatic vegetation assemblage has remained consistent; accept for the re-establishment of water hyacinth in 2012. Water hyacinth has largely displaced duckweed, and has shifted the overall relative abundance of aquatic vegetation in the park.

#### Biomass

There are no biomass estimates available for this area.

#### Vegetation Treatment History

##### *Biological*

The NOMTRCB experimented with biological controls for water hyacinth in the park. The mottled water hyacinth weevil *Neochetina eichhorniae* was introduced into an isolated area and is monitored by NOMCB personnel.

Submersed aquatic vegetation had become a problem in certain areas of the southern lagoon system. A dense concentration of coontail persisted in an isolated, ten-acre tract of Bayou Metairie. An assessment of the infestation was conducted by LDWF, and it was determined that in the potential absence of submersed aquatic vegetation, this area has enough complex cover to support a balanced fish population, so forty triploid grass carp were stocked in 2016. The coontail density was reduced substantially until 2021 when it rebounded to roughly 70% coverage. In November 2021, City Park contracted to put 250 more triploid grass carp into the system.

Giant Salvinia was discovered in 2019 in an isolated lagoon located at (29.996, -90.090). The area was immediately boomed off in an attempt to contain/isolate the infestation. In the spring of 2020, 18,576 Giant Salvinia Weevils were stocked in this area. The results of the stocking and herbicide treatments were positive, diminishing the population substantially. In 2022 Giant Salvinia was reported in small quantities in Bayou Metairie.

### *Chemical*

Brackish water pumped from Bayou St. John typically controls excessive aquatic vegetation in the park lagoons. However, since 2013 salinity in the northern lagoons have decreased. The lower salinity conditions promoted growth of the nuisance plants duckweed and water hyacinth.

In 2013, LDWF treated approximately 34 acres of duckweed in the northern lagoons. Since 2015, LDWF has treated approximately 115 acres of water hyacinth. In addition, coontail was treated on two separate occasions in 2015 and 2016 (Table 1). The park has hired a private applicator to chemically treat invasive vegetation since then.

Table 1. LDWF chemical treatment history of NOCP for 2006, 2007 and 2013-2017.

YEAR	CHEMICAL	QTY	VEGETATION	ACRES
2006	Reward	12 gal	Duckweed	16
2007	Reward	20 gal	Duckweed	8
2013	Tribune	34 gal	Duckweed	34
2014	Tribune	51.5 gal	Duckweed/Mosquito Fern (Azolla carolinae)	59
2015	2,4-D	15	Water Hyacinth	30
2015	Tribune	17.5 gal	Duckweed/Mosquito Fern (Azolla carolinae)	17.5
2015	Aquathal Super K	100 lb.	Coontail (Ceratophyllum demersum)	4.5
2016	2,4-D	15 gal	Water Hyacinth	70
2016	Aquathal K	40 gal	Coontail (Ceratophyllum demersum)	7
2017	2,4-D	5 gal	Water Hyacinth	15

## **HISTORY OF REGULATIONS**

### Recreational

State recreational fishing regulations apply. Recreational fishing regulations may be viewed at the link: <http://www.wlf.louisiana.gov/fishing/regulations>

Prior to Hurricane Katrina, the park association required anglers to purchase a fishing permit from City Park. This requirement has been suspended until further notice. See the following code of ordinance for the City of New Orleans under Article III. Parks and Playgrounds for gear and permission restrictions (Municode, updated January 22, 2009):

Sec. 106-167. Possession of seines, nets, etc., in parks.

It shall be unlawful for any person to have in his possession or to carry within the limits of the city parks without the authority of the boards of commissioners of such parks, or during the closed season as fixed by such boards, any fish nets, cast nets, seines, fishing lines or poles. (Code 1956, § 43-42)

Sec. 106-166. Fishing in parks without permission or during closed season prohibited.

It shall be unlawful for any person to kill, take, snare, pursue, catch or have in possession any fish within the limits of the city parks without the authority of the board of commissioners of such parks or during the closed season, as fixed by such boards.

(Code 1956, § 43-41)

#### Commercial

Commercial fishing is prohibited. The prohibition is enforced by the New Orleans City Park Police Department.

### **FISH KILLS / DISEASE HISTORY**

A minor fish kill occurred in May 2012. The kill occurred in the western end of Bayou Metairie and was likely caused by excessive storm water runoff. District biologists received a report of the kill several days after it occurred. The kill was considered minor and fish kill estimates were not conducted. However, dead largemouth bass and bluegill were observed.

A significant fish kill occurred on August 16th, 2013 southeast of Diagonal Dr. Staff from LDWF Marine Fisheries Section CSA 2 investigated the kill and filed a report. The kill was reportedly dominated by threadfin shad and bluegill. Gizzard shad, largemouth bass and yellow bass were also observed dead. The kill was likely caused by a severe duckweed infestation covering the water's surface.

### **CONTAMINANTS / POLLUTION**

#### Water Quality

No fish consumption or swimming advisories have been issued for the New Orleans City Park lagoons. The multiple connections to Bayou St. John result in increased salinity levels in the lagoon system. During periods of low water, this salinity can exceed tolerance of freshwater fishes.

### **BIOLOGICAL**

#### Fish Samples

Pre 1965 – There are no records of fish sampling.

Post 1965 – There are records of fish sampled in 1983; however, these records consist of a summary chart. The original data sheets cannot be located. New Orleans City Park Improvement Association prohibited the use of rotenone or any chemical based sampling in the park lagoons.

In 2008, LDWF initiated biannual standardized sampling in the New Orleans City Park lagoons at established site locations (Figure 3). In 2011, LDWF through adaptive management practices, adjusted our biannual standardized sampling protocol to four sportfish samples in the spring and fall, and four fish community samples in the fall at four designated sites (Figure 3. Table 2.).

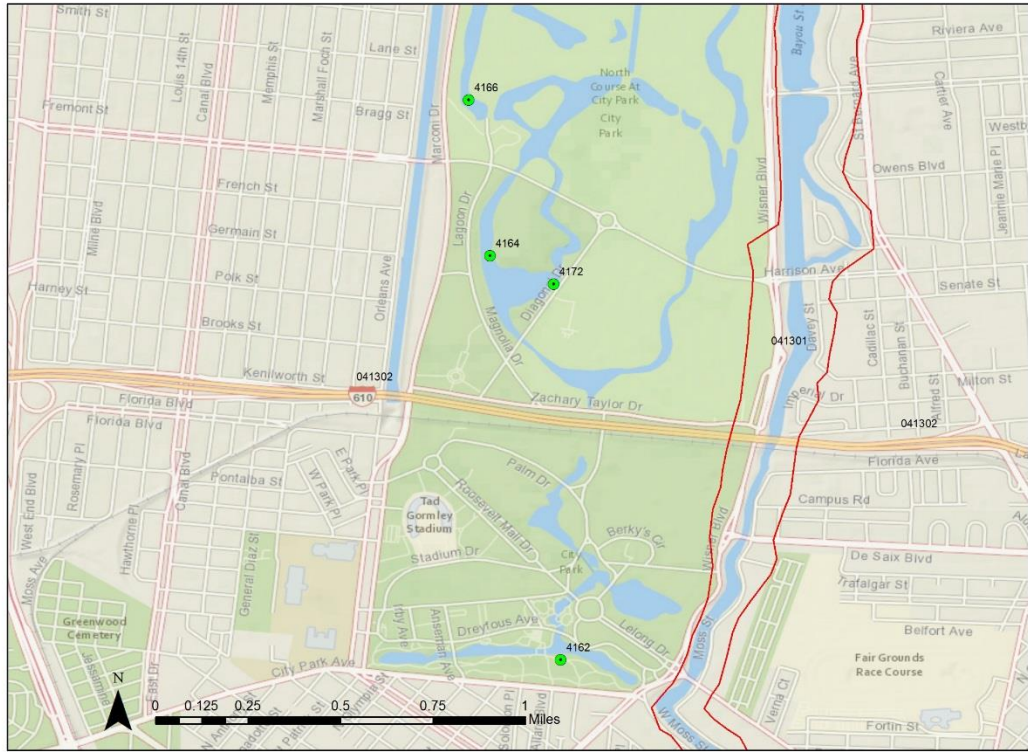


Figure 3. Louisiana Department of Wildlife and Fisheries electrofishing stations in New Orleans City Park.

The University of New Orleans, led by the Pontchartrain Institute for Environmental Sciences, had also sampled the New Orleans City Park lagoons. Shoreline seining was conducted at three sites in the lagoon system.

Table 2. Current sites sampled in New Orleans City Park.

Site Code	Latitude	Longitude	Waterbody Code
4172	29.99917	-90.09472	41302
4166	30.00639	-90.09806	41302
4164	30.00028	-90.09722	41302
4162	29.98444	-90.09444	41302

Table 3. Historical, present and proposed fisheries sampling from 1983 – 2021.

NEW ORLEANS CITY PARK FISH SAMPLING	
1983	Unknown method of sampling referred to as a “population survey”
1984-2005	No sampling
2006-2007	University of New Orleans: Seine hauls – 3 hauls/month
2008	Electrofishing – 9-900 second samples (spring) 4-900 second samples (fall) University of New Orleans: Seine hauls – 3 hauls/month
2009	Electrofishing - 9-900 second samples (spring) 9-900 second samples (fall) University of New Orleans: Seine hauls – 3 hauls/month
2010	Electrofishing - spring and fall; monthly collections of Rio Grande cichlids and bluegill to perform life history study and compare diets (Loyola University New Orleans)
2011-2021	Electrofishing 4 – 900 second samples in the spring and 4 – 900 second samples in the fall Electrofishing 4 – 225 second fish assemblage samples in the fall

Lake Records

According to the New Orleans City Park Improvement Association (2009), the largest fish ever caught in the park lagoons was a 52-pound buffalo. This fish was caught by 12-year-old, Tommy Descant, on July 21, 1976. The website also states that a 44-pound blue catfish, 42 inches in length and 26 inches in girth, was caught in February 2005. Several trophy largemouth bass were captured by anglers in 2013. The new NOCP largemouth bass record of 9 lbs., 3 oz. was caught by Broc Corcoran on March 5, 2018.

Stocking History

Table 3. Stocking history of NOCP lagoons from 1999 – 2021.

<b>NEW ORLEANS CITY PARK LAGOONS STOCKING</b>			
<b>Species</b>	<b>Date</b>	<b>Size</b>	<b>Total #</b>
Florida Largemouth Bass (FLMB)	1/16/1999	1-year	1,289
FLMB	1/29/1999	1-year	1,305
Blue Catfish	8/1/2002	Fingerlings	3,312
Bluegill	1/29/2003	Fingerlings	53,887
FLMB	5/8/2003	Fingerlings	10,965
FLMB	10/30/2003	Phase II Fingerlings	400
Channel Catfish	2/3/2004	Adults	48
FLMB	3/16/2004	Adults	154
Bluegill	11/30/2004	Fingerlings	11,662
FLMB	4/25/2005	Fingerlings	4,834
FLMB	6/9/2005	Fingerlings	1,655
Bluegill	12/8/2006	Fingerlings	2,699
Largemouth Bass (LMB)	12/8/2006	Fingerlings	523
Redear Sunfish	12/8/2006	Fingerlings	17
Warmouth	12/8/2006	Fingerlings	87
Channel Catfish	10/10/2007	Fingerlings	2,500
Largemouth Bass	2/18/2009	Adults	53
LMB	2/19/2009	Adults	60
FLMB	3/24/2009	Adults	250
Channel Catfish		Fingerlings	204
Bluegill	2010	Fingerlings	18,195
FLMB	2013	Adults	50
FLMB	2015	Adults	100
Bluegill	2017	Fingerlings	9,464
Bluegill	2018	Fingerlings	100
Redear Sunfish	2018	Fingerlings	4,250
Redear Sunfish	2019	Fingerlings	4,300
FLMB	2019	Fingerlings	340
FLMB	2019	Adults	80
Bluegill	2021	Fingerlings	4,250

## Species Profile

Table 4. Fish species list for NOCP lagoons.

Freshwater Species	
Lepisosteus oculatus	Spotted Gar
Lepisosteus osseus	Longnose Gar
Dorosoma cepedianum	Gizzard Shad
Dorosoma petenense	Threadfin Shad
Ictiobus bubalus	Smallmouth Buffalo
Ameiurus natalis	Yellow Bullhead
Ictalurus furcatus	Blue Catfish
Ictalurus punctatus	Channel Catfish
Menidia beryllina	Inland Silverside
Cyprinodon variegatus	Sheepshead Minnow
Gambusia affinis	Western Mosquitofish
Poecilia latipinna	Sailfin Molly
Lepomis gulosus	Warmouth
Lepomis macrochirus	Bluegill
Lepomis microlophus	Redear Sunfish
Lepomis miniatus	Red Spotted Sunfish
Micropterus nigricans	Largemouth Bass
Micropterus salmoides	Florida Bass
Pomoxis nigromaculatus	Black Crappie
Morone mississippiensis	Yellow Bass
<i>Herichthys cyanoguttatum</i>	Rio Grande Cichlid

### Genetics

Genetic samples were taken from 12 largemouth bass in 2008. Analysis indicated that all bass were northern subspecies.

### Threatened/Endangered/Exotic Species

Invasive exotic fish species - Rio Grande Cichlid (*Herichthys cyanoguttatus*)

Since 1995, the Rio Grande Cichlid has progressively become more common in the waters in and around New Orleans. Known commonly as the “Texas Blue” in the aquarium trade, this fish breeds readily in aquaria and in the wild. Some pet owners have admitted to dumping these and other ornamental fish species into New Orleans area waters. The species has become established and is a competitive threat to native fish.

Apple snails were discovered in City Park in 2013. They rapidly expanded in the northern lagoons. Although not positively identified, the snails are presumed to be Giant apple snails *Pomacea maculata*. No estimates of snail abundance have been made but their distribution is easily observed by the presence of bright pink egg masses. Apple snails consume aquatic vegetation and may threaten aquatic habitat in the lagoons.

## Creel Surveys

### *Historic Information*

There have been no angler surveys conducted on the New Orleans City Park lagoons.

## **HYDROLOGICAL CHANGES**

Excessive siltation has decreased water depth and inhibited flow throughout the system. This accumulation of organic materials has created a eutrophic environment resulting in low dissolved oxygen levels. Inhibited and inoperable drains have also resulted in stagnant water and low dissolved oxygen levels.

The addition of two freshwater well sources into the lagoon system serve as a means to regulate water levels and dilute the brackish water pumped in from Bayou St. John.

A dredging project was completed in Bayou Metairie in 2012. Sportfish Restoration Grant F146D “Fisheries Habitat Improvements in the Bayou St. John / Metairie Bayou Complex” deepened Bayou Metairie. Dredge material and on-site aggregates were utilized to restore eroding islands. One island was successfully restored and replanted with native vegetation under project authorization. Another island was restored by NOCP.

Two separate construction projects commenced in 2017, The City Park Children’s Museum and The New Orleans Museum of Art Sydney and Walda Besthoff Sculpture Garden /Phase II. Both projects required the dewatering of sections of the lagoon system (Figure 4). Prior to the dewatering process, LDWF relocated fish from Little Lake and the Lagoon north of Big Lake. The water was diverted by way of a pump system from Big Lake to north of Little Lake during this phase of the construction to maintain proper water levels in the park.

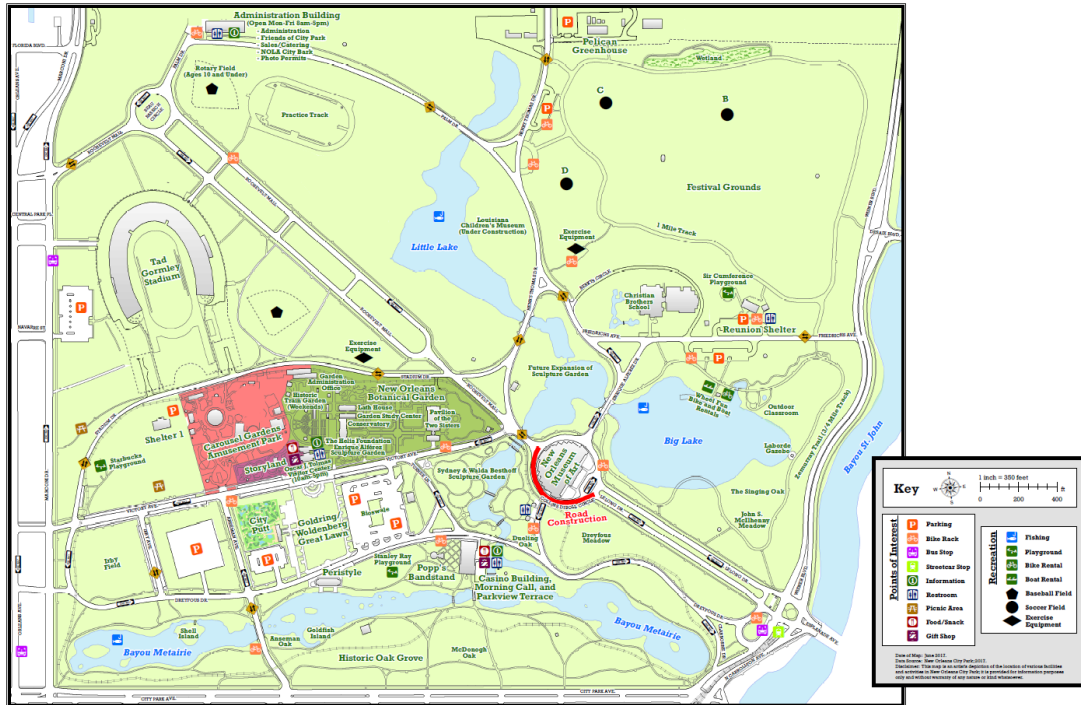


Figure 4. Map of New Orleans City Park Southern Lagoon System, including all buildings and attractions courtesy of the New Orleans City Park Improvement Association (2018).

A newly proposed Lakeview/City Park Hazard Mitigation Project was introduced in 2020. This project aims to reduce flooding in Lakeview and Lake Vista, while improving the ecosystem of the City Park lagoon network. See details at <https://storymaps.arcgis.com/stories/e4c179fb90f3444a9327a035ad9b75c9>

## WATER USE

### Hunting

Hunting is prohibited in New Orleans City Park. The prohibition is enforced by the City Park Police Department. Please see the following code of ordinance for the City of New Orleans under Article VII. City Park (Municode, updated January 22, 2009):

Sec. 106-301. Prohibition of certain activities.

It shall be unlawful for any person to engage in any of the activities herein below listed while within the confines of City Park. Those activities which shall be unlawful unless specifically approved by the director of the park are:

(b) There shall be no trapping, hunting, discharging of firearms, or other noisemaking devices whatsoever in the park. (M.C.S., Ord. No. 22166, § 1, 3-16-06; M.C.S., Ord. No. 22996, § 3, 2-15-08)

### Swimming

Swimming is prohibited in New Orleans City Park and is enforced by the City Park Police Department. Please see the following code of ordinance for the City of New Orleans Article VII. City Park (Municode, updated January 22, 2009):

Sec. 106-301. Prohibition of certain activities.

It shall be unlawful for any person to engage in any of the activities herein below listed while within the confines of City Park. Those activities which shall be unlawful unless specifically approved by the director of the park are:

- (1) It is prohibited to bathe or wade in or enter any lake, pool, lagoon, fountain or Bayou St. John.  
(M.C.S., Ord. No. 22166, § 1, 3-16-06; M.C.S., Ord. No. 22996, § 3, 2-15-08)

## **REFERENCES**

Burk-Kleinpeter Inc. 1996. Bayou St. John Environmental Management Study. Prepared for The Board of Commissioners of the Orleans Levee District.

Charter, New Orleans City Park, no date. Board of Commissioners for the New Orleans City Park Improvement Association. Last viewed on March 18, 2009.  
[http://www.legis.state.la.us/boards/board\\_members.asp?board=240](http://www.legis.state.la.us/boards/board_members.asp?board=240)

Municode, updated January 22, 2009. City of New Orleans Municipal Code. Last viewed on March 17, 2009. <http://www.municode.com/resources/gateway.asp?pid=10040&sid=18>.

New Orleans City Park Improvement Association, 2005-2009. New Orleans City Park. New Orleans, LA. Last viewed on March 17, 2009. <http://www.neworleanscitypark.com>.