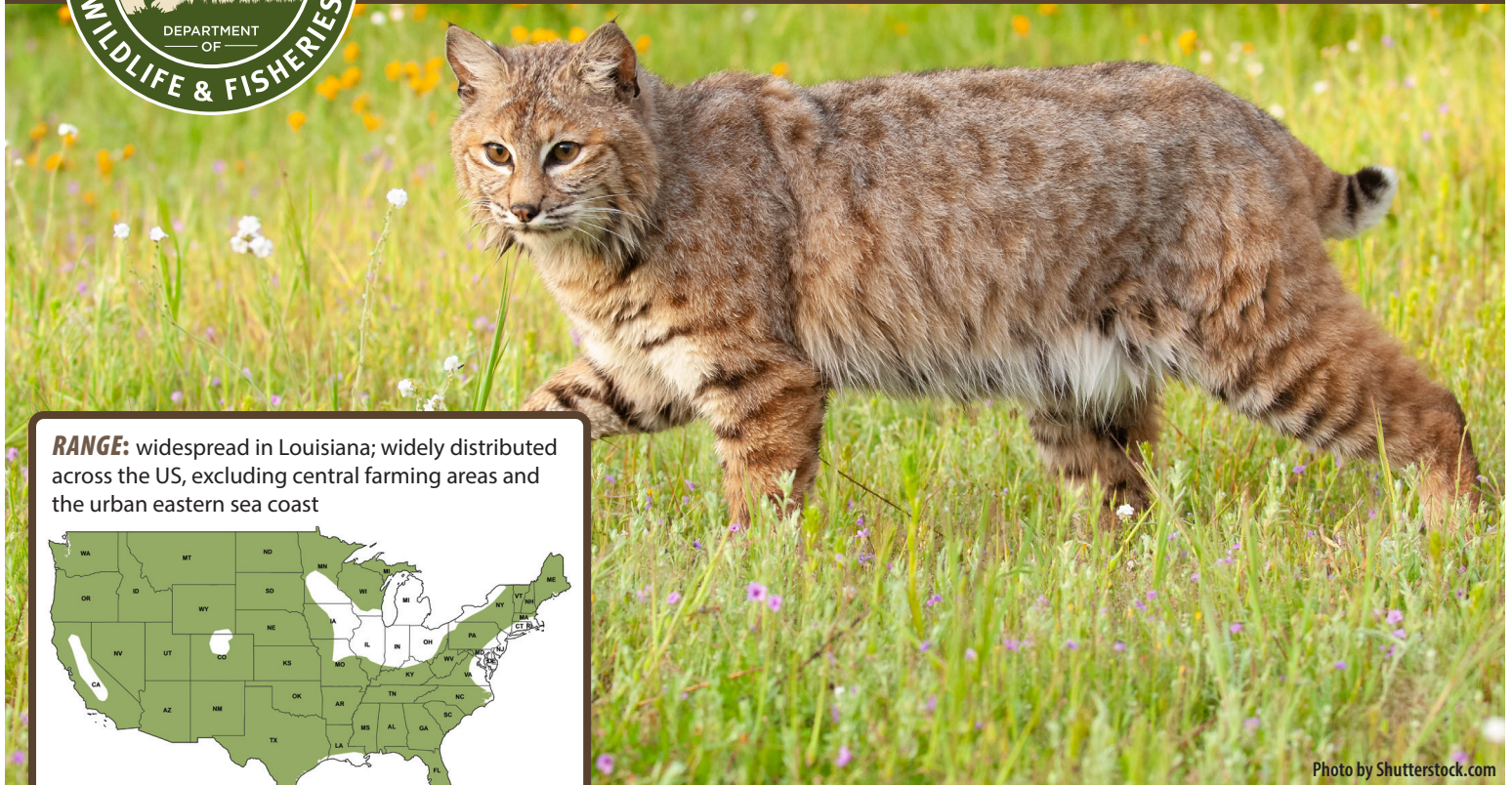




Bobcat

Lynx rufus



RANGE: widespread in Louisiana; widely distributed across the US, excluding central farming areas and the urban eastern sea coast

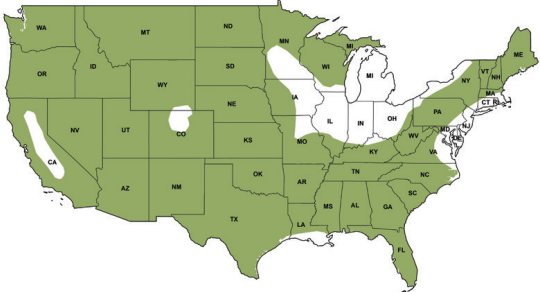


Photo by Shutterstock.com

Anatomy

Bobcats are a bit larger than a large domestic cat in size. The average adult length is 25 to 30 inches (tail is about 6 inches), weight 15-20 pounds. Their fur is reddish or yellowish brown streaked and spotted with black. Adults are rarely preyed upon; juveniles may be vulnerable to male bobcats, coyotes, eagles and fishers. They are vulnerable to rabies, feline distemper, mange, tapeworms, lice and bubonic plaque.

Diet, Habitat & Behavior

The bobcat's diet consists of rabbits, mice, rats, squirrels, small birds and young livestock. Bobcats can take down animals several times their size. They help to stabilize rabbit populations. Bobcats live in heavily forested areas, swamps, bottomland hardwoods. Their dens are located in thick vegetation. They are good tree-climbers and curious animals.

Reproduction

Bobcats wail and scream during breeding season. They breeds in mid to late winter. Their litter size is two to three young; gestation of 62 days.

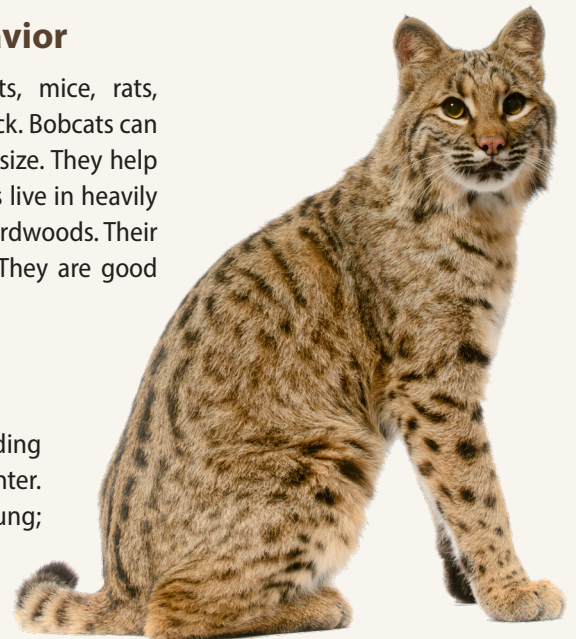


Photo by iStock.com

Contact: Jennifer Hogue-Manuel | LDWF Trapper Education | 337-735-8674 | jhogue@wlf.la.gov

Resources: *place new website link here*

www.wlf.louisiana.gov