

Rare Animals of Louisiana

Dusky Gopher Frog

Rana sevosa

Rarity Rank: SH/G1

	1	2	3	4	5
State					
Global					
	imperiled		rare		secure



Suzanne L. Collins,
The Center for North American Herpetology
www.cnah.org

Identification:

- Stout, generally 6-9 cm snout-vent length
- Dorsolateral ridges
- Uniformly dark above or with irregular dorsal spots lacking light borders
- Throat and belly region is generally pigmented
- Young have less spotting
- Warts are prominent on dorsum

Habitat:

- Upland sandy habitats forested with longleaf pine
- Spends most its life in or near underground refugia
- Breeds in temporary ponds

Food habits:

- Tadpoles are herbivores
- Adults are Insectivores

Range:

- Coastal Plain
- West of Mobile Bay from Alabama to Mississippi and eastern Louisiana
- Currently known from a single site in Mississippi

Reproduction:

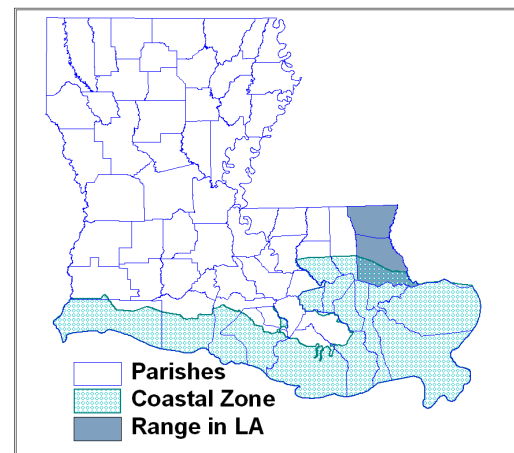
- Age of maturity for male 6-8 months
- Females 24-36 months
- Annual survival rate 65-92 percent

Threats:

- Loss of open pine forest
- Fire suppression which causes habitat degradation

Beneficial Management Practices:

- Protect breeding sites and surrounding uplands.
- Encourage actions that enhance dusky gopher frog populations.



Range based on occurrences in Natural Heritage database

Rare Animals of Louisiana



U.S. Range: LA, MS, AL

References:

NatureServe Explorer: An online encyclopedia of life [web application]. 2002. Version 1.6 . Arlington, Virginia, USA: NatureServe. Available: <http://www.natureserve.org/explorer>. (Accessed: September 17, 2008)